

福島県内空間積算線量測定結果について(第17報)  
 [Readings of Air Dose Rate in Fukushima Pref. (Report No.17)]

平成23年8月7日 18時00分現在  
 [As of 18:00 August 7, 2011]

簡易型線量計(ポケット線量計)による値  
 [Value measured by simple dosimeters]

場所 (東京電力(株)福島第1発電所からの距離) [Reading point(Distance from Fukushima Dai-ichi NPP)]	設置日時 [Installation Date and Time]	前回取得日時等 (x) [Date and Time (last monitoring)(x)]	前回取得時数 値(a)( $\mu$ Sv) [Readings (last monitoring) (a)( $\mu$ Sv)]	データ採取日時 (y) [Monitoring Date and Time(y)]	積算数値(b)( $\mu$ Sv) [Reading of Integrated Dose (b)( $\mu$ Sv)]	経過時間(z = y - x) [Accumulated Time(z = y - x)]	積算数値増加量(c = b - a) ( $\mu$ Sv) [Reading of integrated Dose(c = b - a)( $\mu$ Sv)]
							経過時間内の線量率平均値 (c/z) [Average Dose per Hour(c/z)]
県北保健福祉事務所 [Northern part's health and welfare office] [F1]	(約61km北西) [(About61km Northwest)]	2011/4/11 10:40	2011/7/25 10:00	5204	2011/8/1 10:00	5472	168時間00分
							[168hours00minutes]
伊達市役所 [Date city hall] [F2]	(約62km西北西) [(About62km West-northwest)]	2011/4/11 14:30	2011/7/25 10:00	2285	2011/8/1 10:00	2423	168時間00分
							[168hours00minutes]
本宮市役所 [Motomiya city hall] [F3]	(約57km西) [(About57kmWest)]	2011/4/12 10:55	2011/7/25 10:00	2023	2011/8/1 10:00	2152	168時間00分
							[168hours00minutes]
福島北警察署桑折分庁舎 [Fukushima northern police station Koori] [F4]	(約62km北西) [(About62km Northwest)]	2011/4/12 10:00	2011/7/25 8:28	2396	2011/8/1 8:46	2507	168時間18分
							[168hours18minutes]
国見町役場 [Kunimi town hall] [F5]	(約61km北西) [(About61km Northwest)]	2011/4/11 15:20	2011/7/25 10:00	2039	2011/8/1 10:00	2140	168時間00分
							[168hours00minutes]
大玉村役場 [Ootama village hall] [F6]	(約60km西北西) [(About60km West-northwest)]	2011/4/12 10:30	2011/7/25 10:00	1105	2011/8/1 10:50	1181	168時間50分
							[168hours50minutes]
二本松市役所 [Nihonmatsu city hall] [F7]	(約56km西北西) [(About56km West-northwest)]	2011/3/30 10:27	2011/7/25 14:36	4445	2011/8/1 15:00	4673	168時間24分
							[168hours24minutes]
川俣町役場 [Kawamata town hall] [F8]	(約47km西北西) [(About47km West-northwest)]	2011/3/30 11:10	2011/7/25 11:56	2032	2011/8/1 10:20	2115	166時間24分
							[166hours24minutes]
福島市飯野支所 [Fukushima city lino branch office] [F9]	(約51km北西) [(About51km Northwest)]	2011/3/30 10:32	2011/7/25 12:07	2965	2011/8/1 9:46	3110	165時間39分
							[165hours39minutes]
郡山合同庁舎 [Koriyama joint government building] [F10]	(約58km西) [(About58kmWest)]	2011/4/10 10:00	2011/7/25 10:02	2700	2011/8/1 10:02	2853	168時間00分
							[168hours00minutes]
須賀川市役所 [Sugakawa city hall] [F11]	(約60km西南西) [(About60km West-southwest)]	2011/4/10 10:20	2011/7/25 10:00	1018	2011/8/1 10:00	1076	168時間00分
							[168hours00minutes]

場所 (東京電力(株)福島第1発電所からの距離) [Reading point(Distance from Fukushima Dai-ichi NPP)]	設置日時 [Installation Date and Time]	前回取得日時等 (x) [Date and Time (last monitoring)(x)]	前回取得時数 値(a)(μSv) [Readings (last monitoring) (a)(μSv)]	データ採取日時 (y) [Monitoring Date and Time(y)]	積算数値(b)(μSv) [Reading of Integrated Dose (b)(μSv)]	経過時間(z = y - x) [Accumulated Time(z = y - x)]	積算数値増加量(c = b - a) (μSv) [Reading of integrated Dose(c = b - a)(μSv)]
							経過時間内の線量率平均値 (c/z) [Average Dose per Hour(c/z)]
鏡石町役場 [Kagamiishi town hall] [F12] (約64km西南西) [(About64km West-southwest)]	2011/4/10 11:00	2011/7/25 10:00	1012	2011/8/1 10:00	1063	168時間00分	51
						[168hours00minutes]	0.3 μSv/h
天栄村役場 [Tenei village hall] [F13] (約72km西南西) [(About72km West-southwest)]	2011/4/10 11:54	2011/7/25 10:30	2579	2011/8/1 10:02	2725	167時間32分	146
						[167hours32minutes]	0.9 μSv/h
石川町役場 [Ishikawa town hall] [F14] (約60km西南西) [(About60km West-southwest)]	2011/4/11 16:51	2011/7/25 9:00	295	2011/8/1 8:40	312	167時間40分	17
						[167hours40minutes]	0.1 μSv/h
玉川村役場 [Tamakawa village hall] [F15] (約60km西南西) [(About60km West-southwest)]	2011/5/2 18:06	2011/7/25 10:35	635	2011/8/1 11:25	681	168時間50分	46
						[168hours50minutes]	0.3 μSv/h
浅川町役場 [Asakawa town hall] [F16] (約67km南西) [(About67km Southwest)]	2011/4/10 15:30	2011/7/25 15:00	522	2011/8/1 10:00	549	163時間00分	27
						[163hours00minutes]	0.2 μSv/h
古殿町役場 [Furudono town hall] [F17] (約56km南西) [(About56km Southwest)]	2011/5/2 16:48	2011/7/11 11:00	303		359		
	2011/7/22 12:30	2011/7/25 10:00	17	2011/8/1 11:30	56	169時間30分	39
田村市都路行政局 [Tamura city Miyakoji administration bureau] [F18] (約21km西) [(About21kmWest)]	2011/3/30 13:00	2011/7/25 9:35	1396	2011/8/1 13:55	1462	172時間20分	66
						[172hours20minutes]	0.4 μSv/h
岩井沢小学校 [Iwaisawa elementary school] [F19] (約27km西) [(About27kmWest)]	2011/3/30 13:20	2011/7/25 9:50	2971	2011/8/1 13:40	3115	171時間50分	144
						[171hours50minutes]	0.8 μSv/h
常葉行政局 [Tokiwa administration bureau] [F20] (約35km西) [(About35kmWest)]	2011/3/30 14:20	2011/7/25 10:10	1085	2011/8/1 13:15	1138	171時間05分	53
						[171hours05minutes]	0.3 μSv/h
田村市役所 [Tamura city hall] [F21] (約41km西) [(About41kmWest)]	2011/3/30 12:05	2011/7/25 10:35	894	2011/8/1 11:45	930	169時間10分	36
						[169hours10minutes]	0.2 μSv/h
三春町役場 [Miharu town hall] [F22] (約48km西) [(About48kmWest)]	2011/5/2 19:23	2011/7/25 8:25	990	2011/8/1 15:30	1073	175時間05分	83
						[175hours05minutes]	0.5 μSv/h
環境センター [Environment center] [F23] (約60km西) [(About60kmWest)]	2011/3/30 16:08	2011/7/25 15:30	2865	2011/8/1 8:15	2999	160時間45分	134
						[160hours45minutes]	0.8 μSv/h
小野町役場 [Ono town hall] [F24] (約39km西南西) [(About39km West-southwest)]	2011/3/30 10:56	2011/7/25 11:10	451	2011/8/1 11:05	474	167時間55分	23
						[167hours55minutes]	0.1 μSv/h

場所 (東京電力(株)福島第1発電所からの距離) [Reading point(Distance from Fukushima Dai-ichi NPP)]	設置日時 [Installation Date and Time]	前回取得日時等 (x) [Date and Time (last monitoring)(x)]	前回取得時数 値(a)(μSv) [Readings (last monitoring) (a)(μSv)]	データ採取日時 (y) [Monitoring Date and Time(y)]	積算数値(b)(μSv) [Reading of Integrated Dose (b)(μSv)]	経過時間(z = y - x) [Accumulated Time(z = y - x)]	積算数値増加量(c = b - a) (μSv) [Reading of integrated Dose(c = b - a)(μSv)]
							経過時間内の線量率平均値 (c/z) [Average Dose per Hour(c/z)]
平田村役場 [Hirata village hall] [F25]	(約47km西南西) [(About47km West-southwest)]	2011/4/1 17:40	2011/7/25 11:35	721	2011/8/1 10:30	752	166時間55分
							[166hours55minutes]
白河合同庁舎 [Shirakawa joint government hall] [F26]	(約81km南西) [(About81km Southwest)]	2011/4/18 14:17	2011/7/25 8:30	1282	2011/8/1 12:50	1364	172時間20分
							[172hours20minutes]
西郷村役場 [Nishigou village hall] [F27]	(約84km西南西) [(About84km West-southwest)]	2011/4/7 15:30	2011/7/25 11:10	1425	2011/8/1 13:00	1510	169時間50分
							[169hours50minutes]
泉崎村役場 [Izumizaki village hall] [F28]	(約72km西南西) [(About72km West-southwest)]	2011/4/7 17:40	2011/7/25 10:00	1022	2011/8/1 10:00	1078	168時間00分
							[168hours00minutes]
中島村役場 [Nakajima village hall] [F29]	(約68km西南西) [(About68km West-southwest)]	2011/4/7 17:10	2011/7/25 9:00	383	2011/8/1 10:30	406	169時間30分
							[169hours30minutes]
矢吹町役場 [Yabuki town hall] [F30]	(約66km西南西) [(About66km West-southwest)]	2011/4/7 16:40	2011/7/25 10:00	1000	2011/8/1 10:00	1057	168時間00分
							[168hours00minutes]
棚倉町役場 [Tanagura town hall] [F31]	(約73km西南西) [(About73km West-southwest)]	2011/4/8 16:45	2011/7/25 10:00	777	2011/8/1 13:00	831	171時間00分
							[171hours00minutes]
矢祭町役場 [Yamatsuri town hall] [F32]	(約82km南西) [(About76km Southwest)]	2011/4/8 15:40	2011/7/25 11:15	335	2011/8/1 12:50	350	169時間35分
							[169hours35minutes]
塙町役場 [Hanawa town hall] [F33]	(約76km南西) [(About63km Southwest)]	2011/4/8 16:10	2011/7/25 10:55	653	2011/8/1 10:00	687	167時間05分
							[167hours05minutes]
鮫川村役場 [Samegawa village hall] [F34]	(約63km南西) [(About63km Southwest)]	2011/4/8 14:05	2011/7/25 9:50	408	2011/8/1 9:50	433	168時間00分
							[168hours00minutes]
会津若松合同庁舎 [Aizuwakamatsu joint government building] [F35]	(約97km西) [(About97kmWest)]	2011/4/13 16:33	2011/7/25 10:15	423	2011/8/1 10:10	449	167時間55分
							[167hours55minutes]
喜多方市役所 [Kitakata city hall] [F36]	(約105km西北西) [(About105km West-northwest)]	2011/4/12 13:26	2011/7/25 10:00	399	2011/8/1 10:00	422	168時間00分
							[168hours00minutes]
北塩原村役場 [Kitashiobara village hall] [F37]	(約100km西北西) [(About100km West-northwest)]	2011/4/12 12:03	2011/7/25 16:00	458	2011/8/1 14:05	484	166時間05分
							[166hours05minutes]
野沢小学校(西会津町) [Nozawa Elementary School(Nishiaizu town)] [F38]	(約124km西) [(About124kmWest)]	2011/4/13 11:51	2011/7/25 10:00	369	2011/8/1 10:30	390	168時間30分
							[168hours30minutes]

場所 (東京電力(株)福島第1発電所からの距離) [Reading point(Distance from Fukushima Dai-ichi NPP)]	設置日時 [Installation Date and Time]	前回取得日時等 (x) [Date and Time (last monitoring)(x)]	前回取得時数 値(a)(μSv) [Readings (last monitoring) (a)(μSv)]	データ採取日時 (y) [Monitoring Date and Time(y)]	積算数値(b)(μSv) [Reading of Integrated Dose (b)(μSv)]	経過時間(z = y - x) [Accumulated Time(z = y - x)]	積算数値増加量(c = b - a) (μSv) [Reading of integrated Dose(c = b - a)(μSv)]
							経過時間内の線量率平均値 (c/z) [Average Dose per Hour(c/z)]
磐梯町役場 [Bandai town hall] [F39] (約94km西) [(About94kmWest)]	2011/4/12 10:01	2011/5/9 10:00	144		461		
	2011/5/20 9:56	2011/7/25 11:50	288	2011/8/1 10:00	317	166時間10分 [166hours10minutes]	29 0.2 μSv/h
猪苗代町役場 [Inawashiro town hall] [F40] (約83km西) [(About83kmWest)]	2011/4/12 10:53	2011/7/25 10:45	416	2011/8/1 12:40	443	169時間55分 [169hours55minutes]	27 0.2 μSv/h
	2011/4/23 11:43	2011/7/25 10:25	507	2011/8/1 10:10	542	167時間45分 [167hours45minutes]	35 0.2 μSv/h
湯川村公民館 [Yugawa village community center] [F42] (約103km西) [(About103kmWest)]	2011/4/23 10:52	2011/7/25 10:00	820	2011/8/1 10:00	875	168時間00分 [168hours00minutes]	55 0.3 μSv/h
	2011/4/14 9:57	2011/7/25 10:20	509	2011/8/1 10:00	541	167時間40分 [167hours40minutes]	32 0.2 μSv/h
三島町役場 [Mishima town hall] [F44] (約123km西) [(About123kmWest)]	2011/4/14 10:50	2011/7/25 10:00	444	2011/8/1 14:15	476	172時間15分 [172hours15minutes]	32 0.2 μSv/h
	2011/4/14 11:47	2011/7/25 10:00	320	2011/8/1 10:40	341	168時間40分 [168hours40minutes]	21 0.1 μSv/h
昭和村役場 [Shouwa village hall] [F46] (約126km西) [(About126kmWest)]	2011/4/14 13:48	2011/7/25 11:30	344	2011/8/1 11:30	368	168時間00分 [168hours00minutes]	24 0.1 μSv/h
	2011/4/14 15:27	2011/7/25 10:06	376	2011/8/1 10:15	399	168時間09分 [168hours09minutes]	23 0.1 μSv/h
南会津合同庁舎 [Minamiaizu joint government building] [F48] (約115km西南西) [(About115km West-southwest)]	2011/4/8 9:38	2011/7/25 10:00	269	2011/8/1 10:00	284	168時間00分 [168hours00minutes]	15 0.1 μSv/h
	2011/5/13 10:16	2011/7/25 10:00	148	2011/8/1 10:00	162	168時間00分 [168hours00minutes]	14 0.1 μSv/h
相馬市役所 [Soma city hall] [F50] (約43km北北西) [(About43km North-northwest)]	2011/3/29 13:38	2011/7/25 9:17	1378	2011/8/1 10:26	1439	169時間09分 [169hours09minutes]	61 0.4 μSv/h
	2011/5/23 10:19	2011/7/25 8:51	448	2011/8/1 9:50	489	168時間59分 [168hours59minutes]	41 0.2 μSv/h

場所 (東京電力(株)福島第1発電所からの距離) [Reading point(Distance from Fukushima Dai-ichi NPP)]	設置日時 [Installation Date and Time]	前回取得日時等 (x) [Date and Time (last monitoring)(x)]	前回取得時数 値(a)(μSv) [Readings (last monitoring) (a)(μSv)]	データ採取日時 (y) [Monitoring Date and Time(y)]	積算数値(b)(μSv) [Reading of Integrated Dose (b)(μSv)]	経過時間(z = y - x) [Accumulated Time(z = y - x)]	積算数値増加量(c = b - a) (μSv) [Reading of integrated Dose(c = b - a)(μSv)]
							経過時間内の線量率平均値 (c/z) [Average Dose per Hour(c/z)]
南相馬市鹿島庁舎 [Minamisoma city Kashima office] [F52] (約32km北) [(About32kmNorth)]	2011/3/29 15:40	2011/7/25 9:54	2000	2011/8/1 11:07	2080	169時間13分	80
						[169hours13minutes]	0.5 μSv/h
馬事公苑 [Bajikouen] [F53] (約20km北西) [(About20km Northwest)]	2011/3/29 16:50	2011/7/25 11:01	5088	2011/8/1 11:16	5307	168時間15分	219
						[168hours15minutes]	1.3 μSv/h
石神中学校(南相馬市) [Ishigami junior high school (Minamisoma city)] [F54] (約25km北北西) [(About25km North-northwest)]	2011/3/29 17:12	2011/7/25 10:37	3793	2011/8/1 10:43	3975	168時間06分	182
						[168hours06minutes]	1.1 μSv/h
津島小学校(浪江町) [Tsushima elementary school (Namie town)] [F55] (約29km北西) [(About29km Northwest)]	2011/3/30 11:40	2011/6/13 11:59	19950	/	27708	/	/
	2011/6/21 14:00	2011/7/25 11:07	6496	2011/8/1 11:18	7758	168時間11分	1262
J R磐城太田駅 [Iwakioota station] [F56] (約21km北) [(About21kmNorth)]	2011/3/29 16:22	2011/7/25 11:16	1573	2011/8/1 11:34	1648	168時間18分	75
						[168hours18minutes]	0.4 μSv/h
南相馬合同庁舎 [Minamisoma town hall] [F57] (約24km北) [(About24kmNorth)]	2011/3/30 15:10	2011/7/25 11:38	1628	2011/8/1 11:40	1705	168時間02分	77
						[168hours02minutes]	0.5 μSv/h
飯館村役場 [Iitate village hall] [F58] (約39km北西) [(About39km Northwest)]	2011/3/30 13:20	2011/7/25 8:57	9613	2011/8/1 9:45	10120	168時間48分	507
						[168hours48minutes]	3.0 μSv/h
山木屋郵便局 [Yamakiya post office] [F59] (約38km北西) [(About38km Northwest)]	2011/3/30 13:54	2011/6/7 14:34	3886	/	3886	/	2.3 μSv/h
						/	/
山木屋駐在所 [Yamakiya police substation] [F59-1] (約38km北西) [(About38km Northwest)]	2011/6/7 14:34	2011/7/25 11:21	1868	2011/8/1 10:58	2169	167時間37分	301
						[167hours37minutes]	1.8 μSv/h
葛尾村役場 [Katsurao village hall] [F60] (約25km西) [(About25kmWest)]	2011/3/30 12:20	2011/7/25 9:15	4561	2011/8/1 14:25	4822	173時間10分	261
						[173hours10minutes]	1.5 μSv/h
二つ沼公園 [Futatsu-numa park] [F61] (約24km南) [(About24kmSouth)]	2011/4/1 15:30	2011/7/25 11:07	1957	2011/8/1 10:33	2057	167時間26分	100
						[167hours26minutes]	0.6 μSv/h
いわき合同庁舎 [Iwaki joint government building] [F62] (約43km南南西) [(About43km South-southwest)]	2011/3/30 13:00	2011/6/25 7:00	777	/	916	/	/
	2011/7/6 9:00	2011/7/25 10:00	102	2011/8/1 10:00	139	168時間00分	37
						[168hours00minutes]	0.2 μSv/h

場所 (東京電力(株)福島第1発電所からの距離) [Reading point(Distance from Fukushima Dai-ichi NPP)]	設置日時 [Installation Date and Time]	前回取得日時等 (x) [Date and Time (last monitoring)(x)]	前回取得時数値(a)( $\mu$ Sv) [Readings (last monitoring) (a)( $\mu$ Sv)]	データ採取日時 (y) [Monitoring Date and Time(y)]	積算数値(b)( $\mu$ Sv) [Reading of Integrated Dose (b)( $\mu$ Sv)]	経過時間( $z = y - x$ ) [Accumulated Time( $z = y - x$ )]	積算数値増加量( $c = b - a$ ) ( $\mu$ Sv) [Reading of integrated Dose( $c = b - a$ )( $\mu$ Sv)]
							経過時間内の線量率平均値 (c/z) [Average Dose per Hour(c/z)]
いわき市勿来支所 [F63] (約61km南南西) [Iwaki city Nakoso branch] [(About61km South-southwest)]	2011/4/1 12:35	2011/7/25 9:40	389	2011/8/1 10:00	406	168時間20分 [168hours20minutes]	17
							0.1 $\mu$ Sv/h
J R川前駅 [F64] (約35km南西) [Kawamae station] [(About35km Southwest)]	2011/4/1 16:50	2011/7/25 9:35	673	2011/7/27 13:50	682	52時間15分 [52hours15minutes]	9
							0.2 $\mu$ Sv/h
川前公民館 [F64-1] (約34km南西) [Kawamae community center] [(About34km Southwest)]	2011/7/27 13:50	2011/7/27 13:50	0	2011/8/1 9:45	27	115時間55分 [115hours55minutes]	27
							0.2 $\mu$ Sv/h
湯本高校 [F65] (約51km南) [Yumoto highschool] [(About51km South)]	2011/4/1 14:10	2011/7/25 8:58	1086	2011/8/1 9:00	1138	168時間02分 [168hours02minutes]	52
							0.3 $\mu$ Sv/h
海竜の里センター [F66] (約28km南) [Kairyunosato center] [(About28km South)]	2011/4/1 15:10	2011/7/25 10:32	1413	2011/8/1 9:37	1474	167時間05分 [167hours05minutes]	61
							0.4 $\mu$ Sv/h

注)

[Notes:]

・測定者: 福島県(緊急時モニタリング班)

[Reading by :Fukushima Pref.(Emergency Monitoring Unit)]

・測定場所: 屋外地上1m

[Sampling point: 1m from ground]

・簡易型線量計(ポケット線量計)による測定値は、測定器の特性等から同一地点でのサーベイメータによる空間線量率を積算した値とは一致しない。

[At the same reading posts, values measured by simple dosimeters do not always agree to the accumulated air dose rates measured by survey meters at the same reading posts due to the characteristics of measurement devices, etc.]

・新地町役場[F51]については、測定値が安定していないため、測定器を調整していたが、5/23に設置場所を変更し測定を再開した。

[Shinchi Town Hall [F51]: The equipment was under adjustment because the readings were unstable. The installation location was changed on May 23, and the measuring was restarted.]

・磐梯町役場[F39]については、測定器の故障のため、5月9日10時から5月20日9時56分までの約11日間欠測。積算数値(b)は、5月9日までの積算値と5月20日からの積算値を加算した値。

[Bandai Town Hall [F39]: Measuring was interrupted for about 11 days, from 10 o'clock on May 9 to 9:56 on May 20 due to an equipment trouble. Reading of the integrated dose (b) is the sum of the accumulated value until May 9 and the accumulated value since May 20.]

・山木屋郵便局[F59]については6月7日に閉鎖されたことから、同地点から北西方向へ約200m地点にある山木屋駐在所[F59-1]へ移動した(6月7日14時34分測定開始)。

[Yamakiya post office [F59]: The post office was closed on June 7. The sampling point has been moved to Yamakiya police substation [F59-1] which is located about 200m North-West from the post office. The measurement was restarted at 14:34 on June 7.]

・津島小学校(浪江町)[F55]については、測定器の故障のため、6月13日11時59分から6月21日14時00分までの約8日間欠測。

積算値(b)は、6月13日までの積算値と6月21日からの積算値を加算した値。

[Tsushima elementary school (Namie town) [F55]: Measuring was interrupted for about 8 days, from 11:59 on June 13 to 14:00 on June 21, due to an equipment trouble. Reading of the integrated dose (b) is the sum of the accumulated value until June 13 and the accumulated value since June 21.]

・山木屋駐在所[F59-1]については、測定器が地面に落下していたことから(7月4日確認)、6月27日10時49分から7月4日10時54分までの約7日間欠測。

積算数値(b)は、6月27日までの積算値と7月4日からの積算値を加算した値。

[Yamakiya police substation [F59-1]: Measuring was interrupted for about 7 days, from 10:49 on June 27 to 10:54 on July 4, because the equipment was found dropped on the ground on July 4. Reading of the integrated dose (b) is the sum of the accumulated value until June 27 and the accumulated value since July 4.]

場所 (東京電力(株)福島第1発電所からの距離) [Reading point(Distance from Fukushima Dai-ichi NPP)]	設置日時 [Installation Date and Time]	前回取得日時等 (x) [Date and Time (last monitoring)(x)]	前回取得時数 値(a) (μ Sv) [Readings (last monitoring) (a) (μ Sv)]	データ採取日時 (y) [Monitoring Date and Time(y)]	積算数値(b) (μ Sv) [Reading of Integrated Dose (b) (μ Sv)]	経過時間(z = y - x) [Accumulated Time(z = y - x)]	積算数値増加量(c = b - a) (μ Sv) [Reading of integrated Dose(c = b - a) (μ Sv)] 経過時間内の線量率平均値 (c/z) [Average Dose per Hour(c/z)]
--	--------------------------------------	--	--	---	---	--	---

・いわき合同庁舎 [F62] については、測定器の故障のため、6月25日7時から7月6日9時までの約11日間欠測。

積算数値(b)は、6月25日までの積算値と7月6日からの積算値を加算した値。

[Iwaki joint government building [F62]: Measuring was interrupted for about 11 days, from 7:00 June 25 to 9:00 July 6, due to an equipment trouble. Reading of the integrated dose (b) is the sum of the accumulated value until June 25 and the accumulated value since July 6.]

・古殿町役場 [F17] については、測定器が故障したため、7月11日11時から7月22日12時30分までの約11日間欠測。

積算数値(b)は、7月11日までの積算値と7月22日からの積算値を加算した値。

[Furudono town hall [F17]: Measuring was suspended due to an equipment trouble.]

・JR川前駅 [F64] から東方向へ約700m地点にある川前公民館 [F64-1] へ移動した(7月27日13時50分測定開始)。

[Kawamae station [F64]: The sampling point has been moved to Kawamae community center [F64-1] which is located about 700m East from the station. The measurement was restarted at 13:50 on July 27.]

# 福島県内空間積算線量測定結果 (県北、県中、県南、会津、南会津)

Readings of Fukushima Pref. Air Dose Rate  
(Northern part, Midland, South, Aizu, South Aizu)

(凡例)

(Explanatory note)

平成23年8月7日18時現在  
As of 18:00 August 7, 2011

【ポイント番号】  
[ Monitoring Post number]

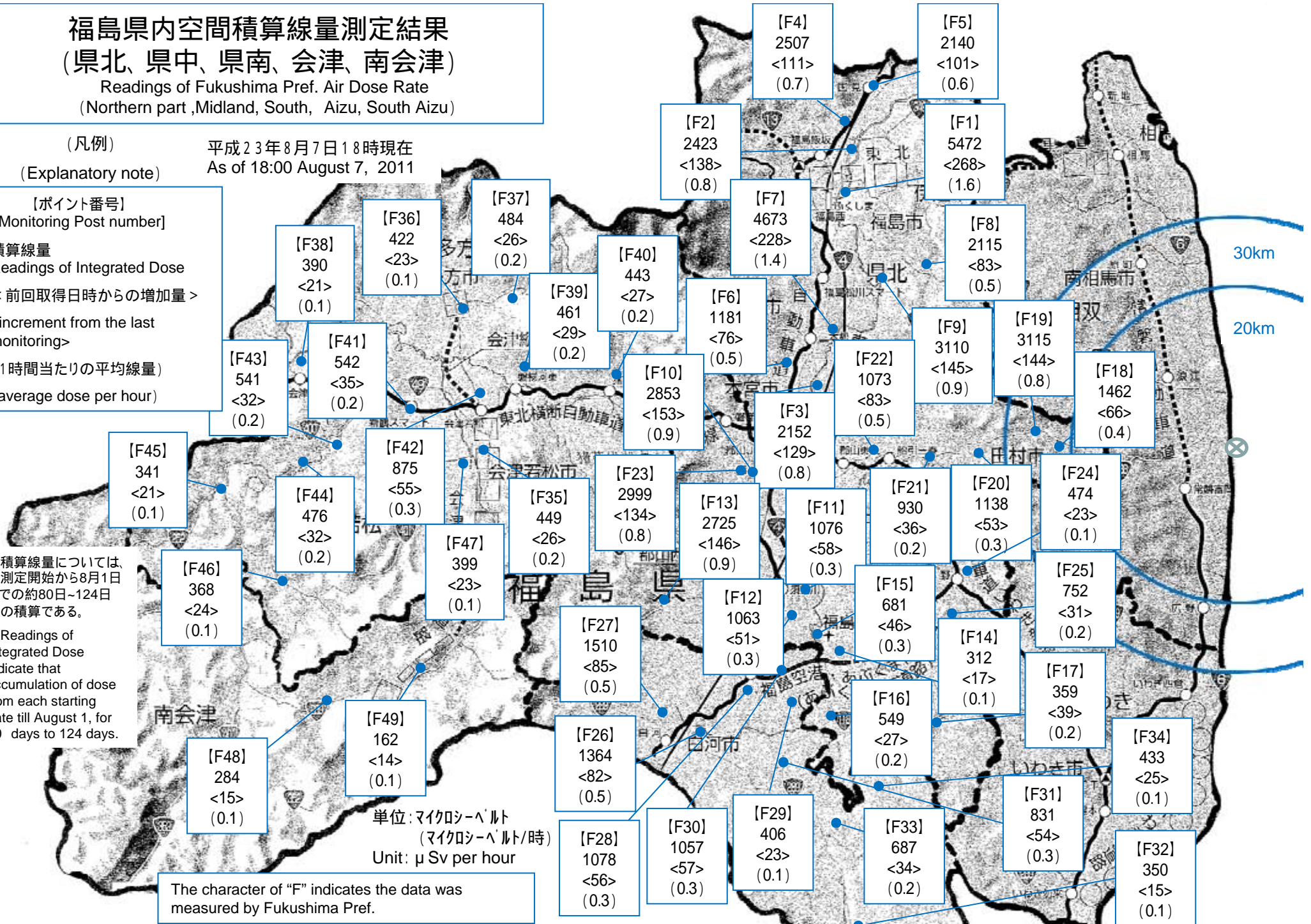
積算線量  
Readings of Integrated Dose  
< 前回取得日時からの増加量 >  
< increment from the last monitoring >  
(1時間当たりの平均線量)  
(average dose per hour)

積算線量については、  
各測定開始から8月1日  
までの約80日~124日  
間の積算である。

Readings of  
Integrated Dose  
indicate that  
accumulation of dose  
from each starting  
date till August 1, for  
80 days to 124 days.

単位: マイクロシーベルト  
(マイクロシーベルト/時)  
Unit:  $\mu$ Sv per hour

The character of "F" indicates the data was  
measured by Fukushima Pref.





# 福島県内空間積算線量測定結果 (相双、いわき)

Readings of Fukushima Pref. Air Dose Rate  
(Sousou, Iwaki)

平成23年8月7日18時現在  
As of 18:00 August 7, 2011

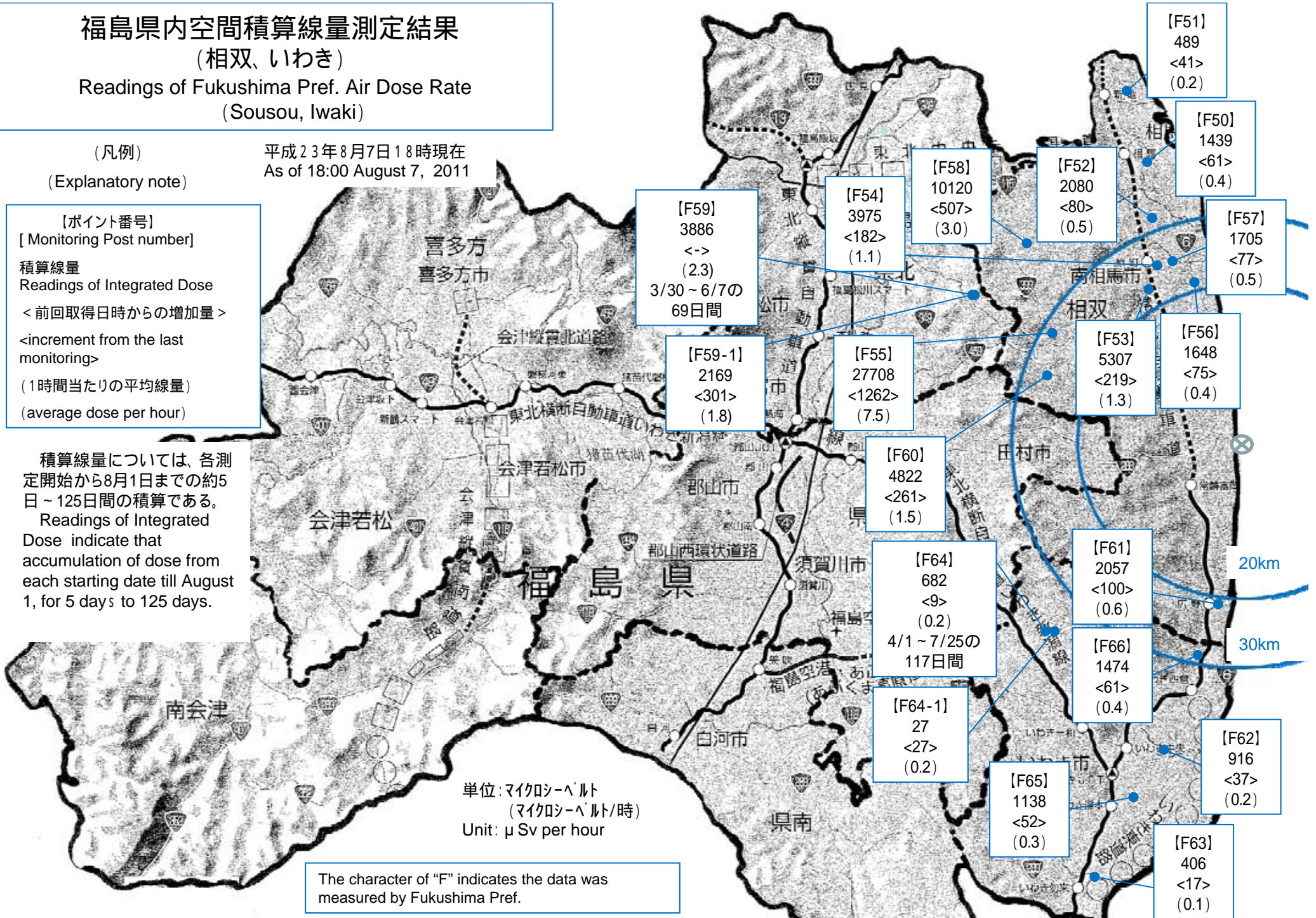
(凡例)  
(Explanatory note)

[ポイント番号]  
[Monitoring Post number]  
積算線量  
Readings of Integrated Dose  
<前回取得日時からの増加量>  
<increment from the last monitoring>  
(1時間当たりの平均線量)  
(average dose per hour)

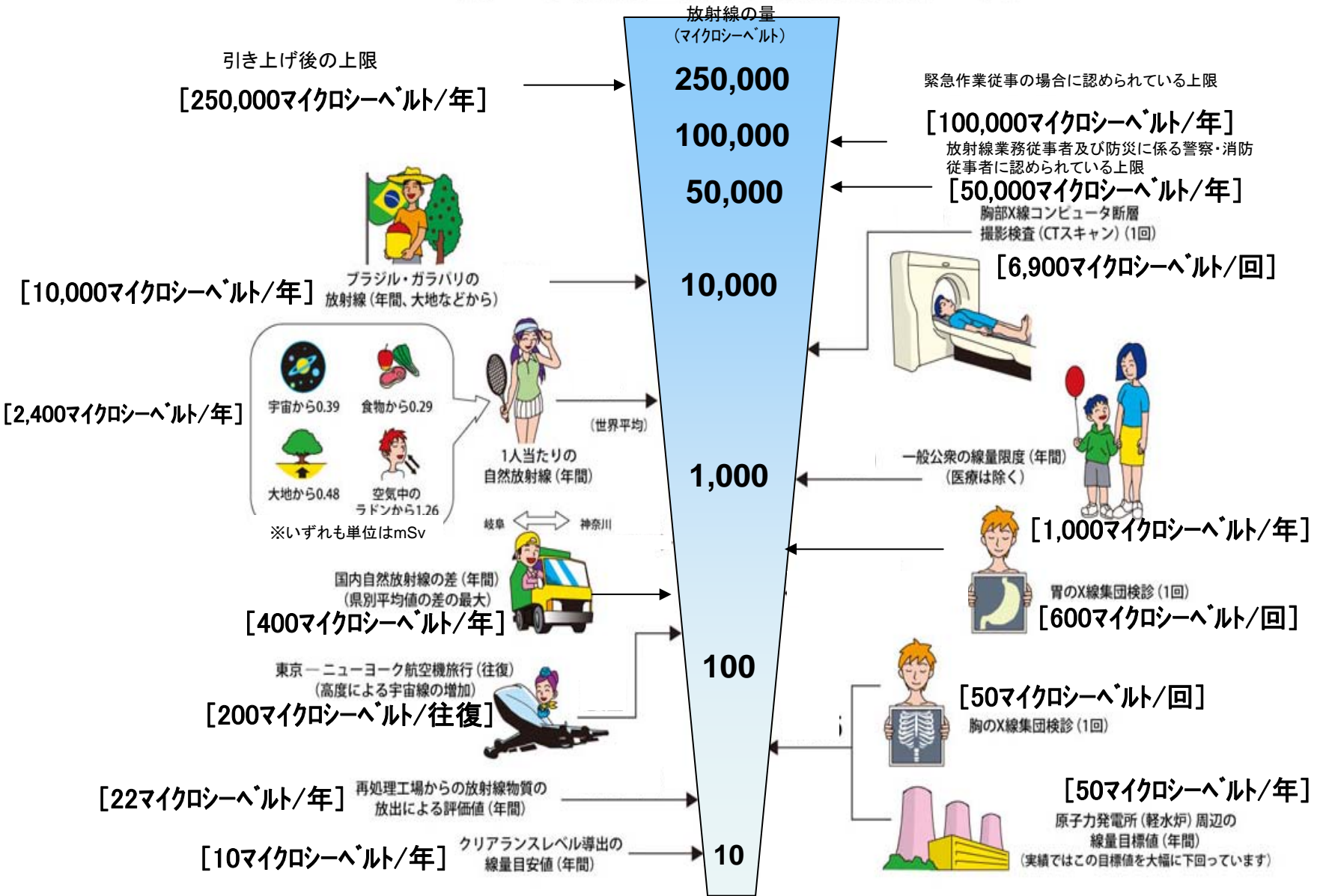
積算線量については、各測定開始から8月1日までの約5日~125日間の積算である。  
Readings of Integrated Dose indicate that accumulation of dose from each starting date till August 1, for 5 days to 125 days.

単位:マイクロシーベルト  
(マイクロシーベルト/時)  
Unit:  $\mu$ Sv per hour

The character of "F" indicates the data was measured by Fukushima Pref.



# 《 日常生活と放射線 》

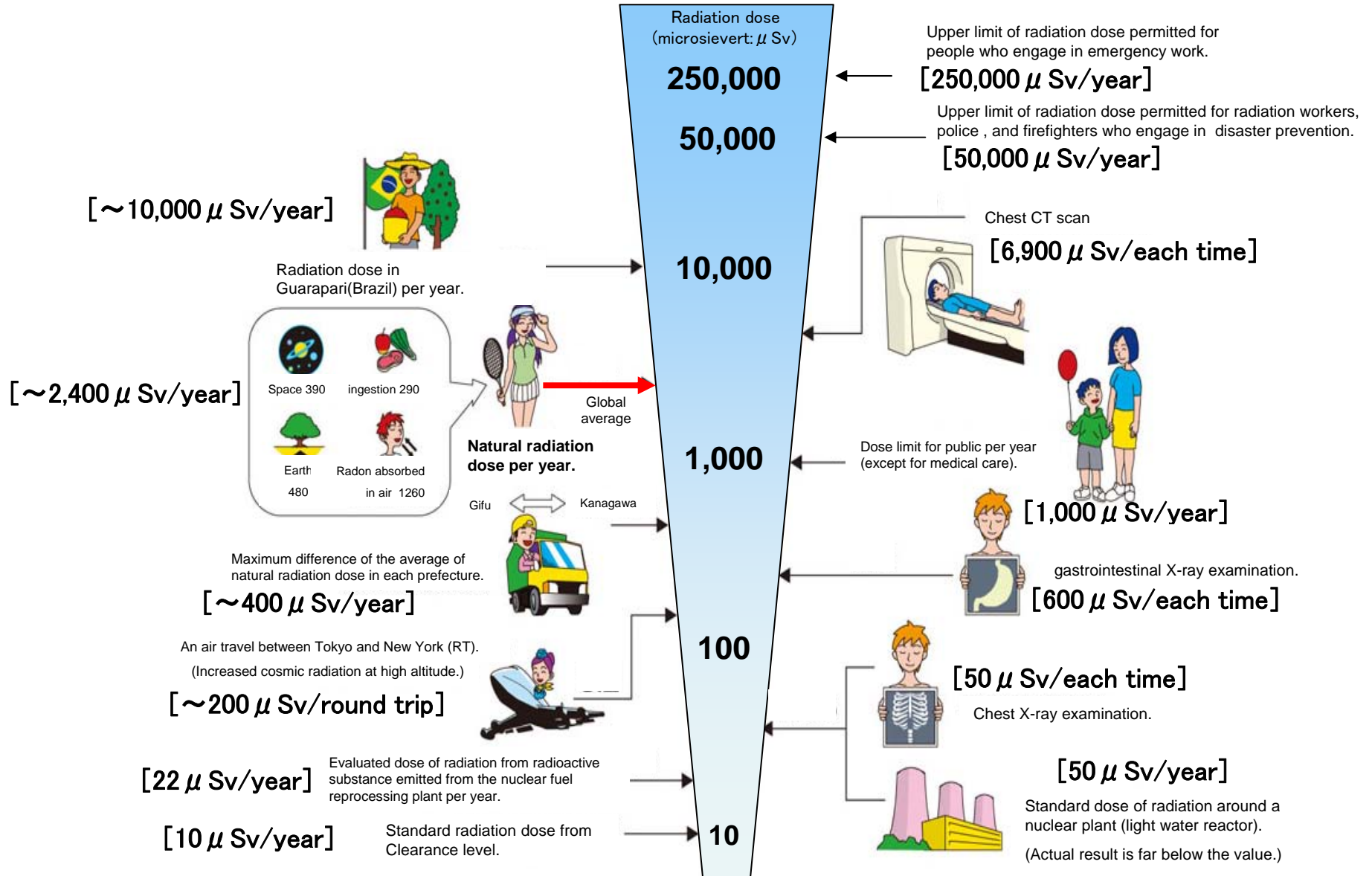


※ Sv【シーベルト】=放射線の種類による生物効果の定数(※) × Gy【グレイ】

※ X線、γ線では 1

# Radiation in Daily-life

※Unit :  $\mu\text{Sv}$



※ Sv [Sievert] = Constant of organism effect by kind of radiation (※) × Gy [gray]

※ It is 1 in case of X ray and  $\gamma$  ray.