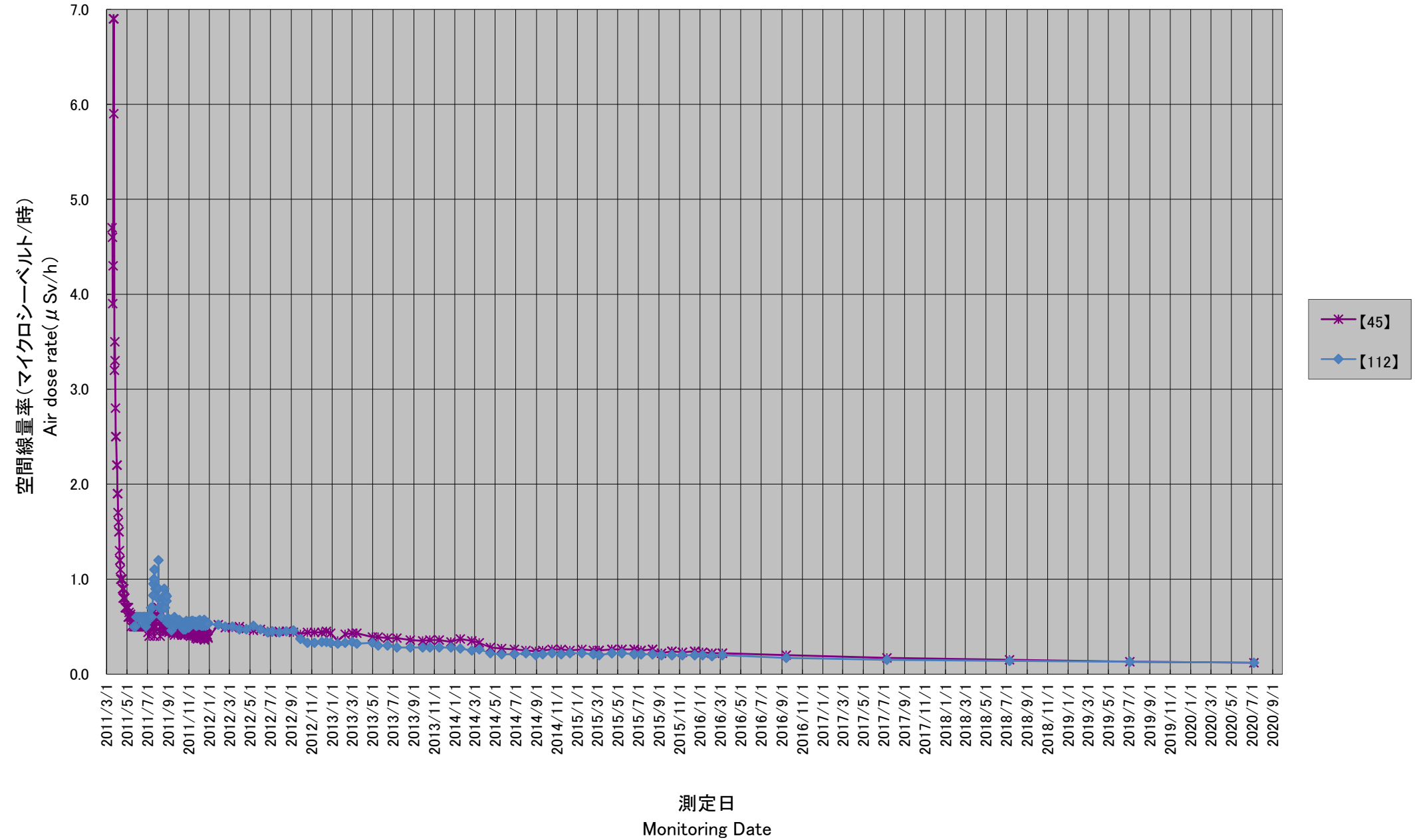


福島第一原子力発電所の20km以遠のモニタリング結果の推移 (1/2)
(Readings at Reading Points out of 20 km Zone of Fukushima Dai-ichi NPP)

楢葉町、広野町(H23/3/17~R2/9/29)
Naraha town, Hirono town (measured on Mar 17, 2011 - Sep 29, 2020)



福島第一原子力発電所の20km以遠のモニタリング結果の推移 (2/2)
(Readings at Reading Points out of 20 km Zone of Fukushima Dai-ichi NPP)

楢葉町、広野町(H23/3/17~R2/9/29)
Naraha town, Hirono town (measured on Mar 17, 2011 – Sep 29, 2020)

