

福島第一原子力発電所沿岸海域の海水の放射性物質濃度測定結果  
 (東京電力ホールディングス㈱の発表をもとに作成<sup>※1</sup>)  
 試料採取日: 令和元年9月2日、4日、17日、18日、19日

Radioactivity concentration in the seawater around Fukushima Dai-ichi NPP  
 (Based on the press release of TEPCO<sup>※1</sup>)  
 Sampling Date: Sep 2, 4, 17, 18, 19, 2019

令和元年10月25日  
 Oct 25, 2019

Cs-134	Cs-137	H-3	全α (gross α)	全β (gross β)	Sr-90	Pu-238	Pu-239+240
放射性物質濃度 (検出下限値) (Bq/L) (ND <sup>※2</sup> : 不検出) Radioactivity concentration (Lower detection limit) (Bq/L) (ND <sup>※2</sup> : Not Detectable)							

T-3	2019/6/4 13:45	0.0015	0.016	0.57		ND(15)				
	2019/6/11 13:50	0.0020	0.025							
	2019/6/18 14:30	0.0016	0.017	ND(0.35)		ND(15)				
	2019/6/25 11:20	0.0020	0.025							
	2019/7/2 11:30	0.0017	0.021	0.42		ND(16)				
	2019/7/9 11:25	0.0037	0.047							
	2019/7/16 14:20	0.0015	0.027	0.32		ND(14)				
	2019/7/23 11:30	0.0022	0.033							
	2019/7/30 11:35	ND(0.0012)	0.011							
	2019/8/6 11:25	0.0021	0.026	ND(0.34)		ND(19)				
	2019/8/13 10:55	0.0023	0.033							
	2019/8/20 10:55	ND(0.0013)	0.016	ND(0.34)		ND(14)				
	2019/8/27 10:35	0.0013	0.023							
	2019/9/3 13:55	0.0023	0.026	ND(0.38)		ND(15)				
	2019/9/10 14:20	0.0021	0.027							
2019/9/17 14:00	<b>0.0022</b>	<b>0.027</b>								
T-4	2019/6/4 14:40	ND(0.0012)	0.0095							
	2019/6/11 10:55	0.0013	0.017							
	2019/6/18 11:50	0.0011	0.011							
	2019/6/25 13:50	0.0015	0.019							
	2019/7/2 13:55	0.0016	0.017							
	2019/7/9 14:05	0.0019	0.027							
	2019/7/16 11:10	0.0016	0.024							
	2019/7/23 14:25	0.0034	0.039							
	2019/7/30 14:30	0.0019	0.022							
	2019/8/6 14:00	ND(0.0013)	0.010							
	2019/8/13 14:30	0.0018	0.021							
	2019/8/20 13:40	ND(0.0014)	0.010							
	2019/8/27 14:20	ND(0.0014)	0.0098							
	2019/9/3 8:35	ND(0.0014)	0.010							
	2019/9/10 9:55	ND(0.0010)	0.014							
2019/9/17 11:10	<b>ND(0.0012)</b>	<b>0.013</b>								
T-6	2019/6/4 10:15	0.0018	0.018	0.54		ND(16)				
	2019/6/11 9:20	ND(0.0012)	0.016							
	2019/6/18 10:25	ND(0.0013)	0.012	0.35		ND(18)				
	2019/6/25 9:40	ND(0.0012)	0.010							
	2019/7/2 9:25	0.0023	0.026	ND(0.35)		ND(17)				
	2019/7/9 9:25	0.0016	0.021							
	2019/7/16 8:55	0.0014	0.017	0.42		ND(16)				
	2019/7/23 10:05	ND(0.0013)	0.017							
	2019/7/30 10:10	ND(0.0014)	0.012							
	2019/8/6 9:35	0.0019	0.023	ND(0.36)		ND(16)				
	2019/8/13 9:15	0.0016	0.020							
	2019/8/20 9:20	ND(0.00098)	0.012	0.36		ND(13)				
	2019/8/27 8:55	ND(0.0013)	0.011							
	2019/9/3 9:55	ND(0.0014)	0.0073	0.55		ND(13)				
	2019/9/10 11:20	0.0014	0.026							
2019/9/17 9:50	<b>0.0018</b>	<b>0.027</b>								

○: 上層(表層~2m) Outer Layer

\* 太字下線データが今回追加分。 \* Boldface and underlined readings are new.

※1 東京電力ホールディングス㈱の発表(<http://www.tepco.co.jp/decommission/planaction/monitoring/index-j.html>)

※1 Press release of TEPCO (<http://www.tepco.co.jp/en/nu/fukushima-np/f1/smp/index-e.html>)

※1 NDの記載は、海水の放射性物質濃度の検出値が検出下限値を下回る場合。

※1 ND indicates the case that the detected radioactivity concentration in seawater was lower than the detection limits.

参考

reference

福島第一原発事故以前の海水のモニタリング結果:

(<https://radioactivity.nsr.go.jp/ja/contents/9000/8483/24/Beforedisaster.pdf>)

Results of radiation monitoring before the accident at TEPCO's Fukushima Daiichi Nuclear Power Station.

(<https://radioactivity.nsr.go.jp/ja/contents/9000/8483/24/Beforedisaster.pdf>)

Cs-134	Cs-137	H-3	全α (gross α)	全β (gross β)	Sr-90	Pu-238	Pu-239+240
放射性物質濃度(検出下限値)(Bq/L)(ND※2:不検出) Radioactivity concentration (Lower detection limit) (Bq/L) (ND※2: Not Detectable)							

T-5	2019/6/3 7:06	ND(0.0013)	0.0031	ND(0.35)	ND(2.0)	ND(17)	0.0012		O
		ND(0.0013)	0.0017						L
	2019/6/14 6:57	ND(0.0011)	0.0022						O
		ND(0.0012)	0.0021						L
	2019/6/18 7:22	ND(0.0013)	0.0026	ND(0.33)		ND(15)			O
		ND(0.0013)	0.0018						L
	2019/6/26 7:17	ND(0.0011)	0.0040						O
		ND(0.0013)	0.0028						L
	2019/7/1 7:15	ND(0.0012)	0.0024	ND(0.34)	ND(2.4)	ND(15)	0.00080		O
		ND(0.0011)	0.0022						L
	2019/7/11 7:17	ND(0.0011)	0.0026						O
		ND(0.0012)	0.0028						L
	2019/7/17 7:29	ND(0.0012)	0.0019	ND(0.38)		ND(15)			O
		ND(0.0013)	0.0029						L
	2019/7/22 7:09	ND(0.0012)	0.0024						O
		ND(0.0012)	0.0029						L
	2019/7/29 7:19	ND(0.0012)	0.0017						O
		ND(0.0012)	0.0024						L
2019/8/6 7:23	ND(0.0012)	0.0018	0.40	ND(2.4)	ND(14)	0.0011		O	
	ND(0.0013)	0.0017						L	
2019/8/17 7:30	ND(0.0012)	0.0027						O	
	ND(0.0013)	0.0022						L	
2019/8/20 7:12	ND(0.0013)	0.0030	ND(0.35)		ND(15)			O	
	ND(0.0014)	0.0022						L	
2019/8/27 7:18	ND(0.0013)	0.0020						O	
	ND(0.0012)	0.0020						L	
2019/9/4 7:26	ND(0.0012)	0.0021	ND(0.27)	ND(2.5)	ND(15)	0.0020		O	
	ND(0.0013)	0.0025						L	
2019/9/11 7:10	ND(0.0014)	0.0093						O	
	ND(0.0013)	0.0025						L	
2019/9/18 7:18	ND(0.0014)	0.0018						O	
	ND(0.0012)	0.0027						L	
T-D1	2019/6/3 8:14	ND(0.0012)	0.0042	ND(0.35)	ND(2.3)	ND(17)	0.00068		O
		ND(0.0013)	0.0035						L
	2019/6/14 7:51	ND(0.0012)	0.0033						O
		ND(0.0013)	0.0030						L
	2019/6/17 8:04	ND(0.0013)	0.0094	ND(0.35)		ND(15)			O
		ND(0.0013)	0.0087						L
	2019/6/26 8:12	ND(0.0012)	0.0050						O
		ND(0.0013)	0.0047						L
	2019/7/2 7:54	ND(0.0012)	0.0071	ND(0.34)	ND(2.6)	ND(15)	0.00086		O
		ND(0.0014)	0.0058						L
	2019/7/10 7:55	ND(0.0012)	0.0055						O
		ND(0.0012)	0.0027						L
	2019/7/18 8:08	ND(0.0011)	0.0029	ND(0.36)		ND(18)			O
		ND(0.0012)	0.0028						L
	2019/7/22 8:06	ND(0.0011)	0.0049						O
		ND(0.0013)	0.0042						L
	2019/7/29 8:10	ND(0.0011)	0.0047						O
		ND(0.0012)	0.0043						L
2019/8/8 8:21	ND(0.0011)	0.0030	ND(0.36)	ND(2.6)	ND(16)	0.0011		O	
	ND(0.0011)	0.0046						L	
2019/8/17 10:04	ND(0.0014)	0.0078						O	
	ND(0.0014)	0.0039						L	
2019/8/20 7:45	ND(0.0012)	0.0053	ND(0.35)		ND(15)			O	
	ND(0.0011)	0.0044						L	
2019/8/26 7:57	ND(0.0010)	0.0024						O	
	ND(0.0010)	0.0049						L	
2019/9/2 8:20	ND(0.00097)	0.0029	0.37	ND(2.3)	ND(15)	0.0014		O	
	ND(0.0010)	0.0012						L	
2019/9/11 7:58	ND(0.0011)	0.0051						O	
	ND(0.0013)	0.0044						L	
2019/9/19 8:15	ND(0.0011)	0.0026						O	
	ND(0.0012)	0.0033						L	

{ O: 上層(表層~2m) Outer Layer  
L: 下層(海底より2~3m上) Lower Layer

Cs-134	Cs-137	H-3	全α (gross α)	全β (gross β)	Sr-90	Pu-238	Pu-239+240
放射性物質濃度(検出下限値)(Bq/L)(ND※2:不検出) Radioactivity concentration (Lower detection limit) (Bq/L) (ND※2: Not Detectable)							

T-D5	2019/6/3 8:39	ND(0.0013) ND(0.0014)	0.0052 0.0032	ND(0.35)	ND(2.3)	ND(17)	0.0011		O L	
	2019/6/14 8:17	ND(0.0012) ND(0.0013)	0.0082 0.0033						O L	
	2019/6/17 8:30	ND(0.0011) ND(0.0012)	0.0034 0.0042	ND(0.35)		ND(15)			O L	
	2019/6/26 8:41	ND(0.0012) ND(0.0012)	0.0043 0.0037						O L	
	2019/7/2 8:17	ND(0.0012) ND(0.0012)	0.0059 0.0023	ND(0.34)	ND(2.6)	ND(15)	0.0014		O L	
	2019/7/10 8:19	ND(0.0013) ND(0.0014)	0.0066 0.0026						O L	
	2019/7/18 8:33	ND(0.0013) ND(0.0011)	0.0036 0.0036	ND(0.36)		ND(18)			O L	
	2019/7/22 8:32	ND(0.0013) ND(0.0012)	0.0044 0.0043						O L	
	2019/7/29 8:43	ND(0.0012) ND(0.0012)	0.0041 0.0037						O L	
	2019/8/8 8:44	ND(0.0010) ND(0.0012)	0.0046 0.0056	ND(0.36)	ND(2.6)	ND(16)	0.0013		O L	
	2019/8/17 10:46	ND(0.0012) ND(0.0011)	0.0056 0.0036						O L	
	2019/8/20 8:17	ND(0.0013) ND(0.0013)	0.0039 0.0040	ND(0.35)		ND(15)			O L	
	2019/8/26 8:22	ND(0.0013) ND(0.0012)	0.0028 0.0039						O L	
	2019/9/2 8:47	ND(0.0012) ND(0.0013)	0.0031 0.0021	ND(0.35)	ND(2.4)	ND(15)	0.0014		O L	
	2019/9/11 8:26	ND(0.0014) ND(0.0013)	0.0074 0.0058						O L	
	2019/9/19 8:42	ND(0.0013) ND(0.0013)	0.0042 0.0041						O L	
	T-D9	2019/6/3 7:56	ND(0.0012) ND(0.0011)	0.0068 0.0036	ND(0.35)	ND(2.0)	ND(17)	0.0010		O L
		2019/6/14 8:06	0.0014 ND(0.0011)	0.018 0.0042						O L
2019/6/18 8:15		ND(0.0013) ND(0.0012)	0.0041 0.0057	0.39		ND(15)			O L	
2019/6/26 8:07		ND(0.0011) ND(0.0010)	0.0063 0.0037						O L	
2019/7/1 8:51		ND(0.0012) ND(0.0012)	0.0042 0.0048	ND(0.34)	ND(2.4)	ND(15)	0.0013		O L	
2019/7/11 8:11		ND(0.0011) ND(0.0012)	0.0046 0.0030						O L	
2019/7/17 8:24		ND(0.0012) ND(0.0012)	0.0024 0.0038	ND(0.38)		ND(15)			O L	
2019/7/22 7:54		ND(0.0012) ND(0.0012)	0.0055 0.0042						O L	
2019/7/29 8:03		ND(0.0013) ND(0.0013)	0.0036 0.0043						O L	
2019/8/6 8:17		ND(0.0011) ND(0.0010)	0.010 0.0038	ND(0.36)	ND(2.4)	ND(14)	0.00096		O L	
2019/8/17 8:28		ND(0.0012) ND(0.0013)	0.0047 0.0026						O L	
2019/8/20 8:00		ND(0.0011) ND(0.0012)	0.0018 0.0042	ND(0.35)		ND(15)			O L	
2019/8/27 8:04		ND(0.0011) ND(0.0013)	0.0027 0.0052						O L	
2019/9/4 8:14		ND(0.0013) ND(0.0011)	0.0034 0.0021	0.34	ND(2.5)	ND(15)	0.0014		O L	
2019/9/11 7:52		0.0017 ND(0.0013)	0.019 0.0048						O L	
2019/9/18 8:05		ND(0.0011) ND(0.0013)	0.0031 0.0022						O L	

○: 上層(表層~2m) Outer Layer  
 □: 下層(海底より2~3m上) Lower Layer

Cs-134

Cs-137

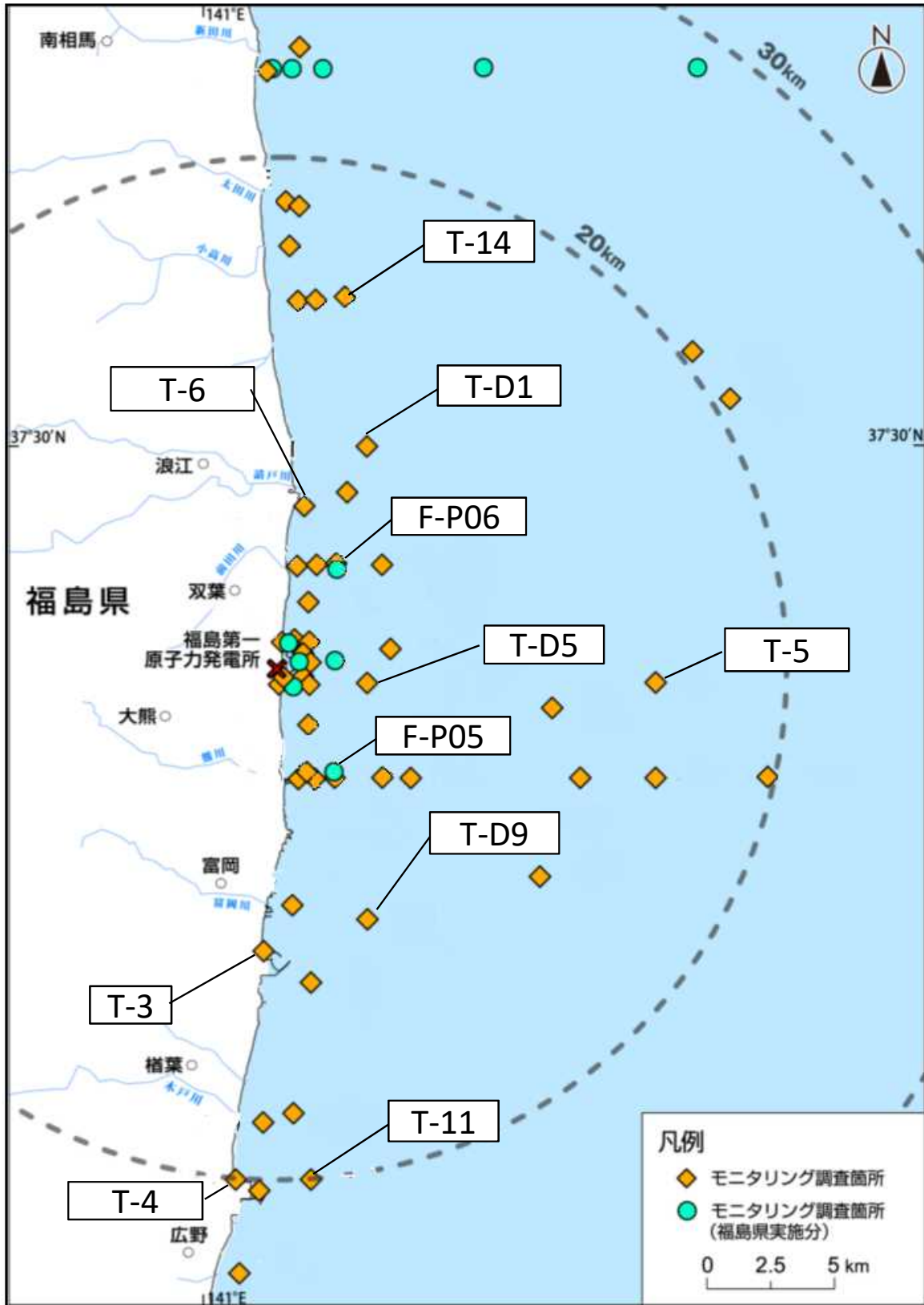
放射性物質濃度(検出下限値)(Bq/L) (ND※2: 不検出)  
Radioactivity concentration (Lower detection limit) (Bq/L) (ND※2: Not Detectable)

T-11	2019/6/3 8:27	ND(0.0014)	0.0061	O
		ND(0.0010)	0.0034	L
	2019/6/14 8:39	ND(0.0011)	0.0056	O
		ND(0.0012)	0.0040	L
	2019/6/18 8:48	ND(0.0014)	0.0052	O
		ND(0.0014)	0.0092	L
	2019/6/26 8:35	ND(0.0012)	0.0057	O
		ND(0.0012)	0.0034	L
	2019/7/1 9:20	ND(0.0012)	0.0080	O
		ND(0.0013)	0.0056	L
	2019/7/11 8:43	ND(0.0012)	0.012	O
		ND(0.0012)	0.0052	L
	2019/7/17 9:01	ND(0.0013)	0.010	O
		ND(0.0014)	0.0043	L
	2019/7/22 8:20	ND(0.0013)	0.0055	O
		ND(0.0013)	0.0057	L
	2019/7/29 8:34	ND(0.0013)	0.0058	O
		ND(0.0013)	0.0038	L
	2019/8/6 9:04	ND(0.0013)	0.0042	O
		ND(0.0013)	0.0065	L
2019/8/17 9:05	ND(0.0014)	0.0055	O	
	ND(0.0012)	0.0041	L	
2019/8/20 8:30	ND(0.0011)	0.0023	O	
	ND(0.0012)	0.0039	L	
2019/8/27 8:33	ND(0.0011)	0.0028	O	
	ND(0.0012)	0.0048	L	
2019/9/4 8:56	ND(0.0013)	0.0032	O	
	ND(0.0012)	0.0022	L	
2019/9/11 8:20	ND(0.0011)	0.0078	O	
	ND(0.0011)	0.0042	L	
2019/9/18 8:37	<b>ND(0.0012)</b>	<b>0.0089</b>	O	
	<b>ND(0.0012)</b>	<b>0.0043</b>	L	

T-14	2019/6/3 7:37	ND(0.0012)	0.0045	O
		ND(0.0011)	0.0018	L
	2019/6/14 7:26	ND(0.0011)	0.0056	O
		ND(0.0010)	0.0053	L
	2019/6/17 7:44	ND(0.0011)	0.0040	O
		ND(0.0012)	0.0055	L
	2019/6/26 7:51	ND(0.0015)	0.0040	O
		ND(0.0015)	0.0039	L
	2019/7/2 7:27	ND(0.0011)	0.0042	O
		ND(0.0011)	0.0033	L
	2019/7/10 7:34	ND(0.0011)	0.0037	O
		ND(0.0012)	0.0028	L
	2019/7/18 7:48	ND(0.0013)	0.0041	O
		ND(0.0012)	0.0035	L
	2019/7/22 7:46	ND(0.0013)	0.0048	O
		ND(0.0013)	0.0032	L
	2019/7/29 7:45	ND(0.0011)	0.0042	O
		ND(0.0013)	0.0040	L
	2019/8/8 7:47	ND(0.0011)	0.0032	O
		ND(0.0011)	0.0038	L
2019/8/17 9:33	ND(0.0012)	0.0046	O	
	ND(0.0011)	0.0034	L	
2019/8/20 7:25	ND(0.0013)	0.0031	O	
	ND(0.0014)	0.0050	L	
2019/8/26 7:38	ND(0.0012)	0.0028	O	
	ND(0.0013)	0.0051	L	
2019/9/2 7:48	ND(0.0012)	0.0018	O	
	ND(0.0012)	0.0022	L	
2019/9/11 7:40	ND(0.0014)	0.0044	O	
	ND(0.0016)	0.0090	L	
2019/9/19 7:53	<b>ND(0.0015)</b>	<b>0.0032</b>	O	
	<b>ND(0.0015)</b>	<b>0.0024</b>	L	

O: 上層(表層~2m) Outer Layer  
L: 下層(海底より2~3m上) Lower Layer

福島第一原子力発電所沿岸海域の海水採取ポイント  
 (Seawater sampling points near and around Fukushima Dai-ichi NPP)



\* 図中の×は東京電力ホールディングス(株)福島第一原子力発電所を示す。

\* The legends × indicate the locations of TEPCO Fukushima Dai-ichi NPP, respectively.