

福島第一原子力発電所沿岸海域の海水の放射性物質濃度測定結果  
 (東京電力ホールディングス㈱の発表をもとに作成<sup>※1</sup>)  
 試料採取日: 令和元年8月6日、8日、20日、26日、27日

Radioactivity concentration in the seawater around Fukushima Dai-ichi NPP  
 (Based on the press release of TEPCO<sup>※1</sup>)  
 Sampling Date: Aug 6, 8, 20, 26, 27, 2019

令和元年10月1日  
 Oct 1, 2019

Cs-134	Cs-137	H-3	全α (gross α)	全β (gross β)	Sr-90	Pu-238	Pu-239+240
放射性物質濃度 (検出下限値) (Bq/L) (ND <sup>※2</sup> : 不検出) Radioactivity concentration (Lower detection limit) (Bq/L) (ND <sup>※2</sup> : Not Detectable)							

T-3	2019/5/14 11:10	ND(0.0012)	0.0042							
	2019/5/24 10:10	ND(0.0013)	0.016	0.76		ND(14)				
	2019/5/28 14:05	0.0014	0.019							
	2019/6/4 13:45	0.0015	0.016	0.57		ND(15)				
	2019/6/11 13:50	0.0020	0.025							
	2019/6/18 14:30	0.0016	0.017	ND(0.35)		ND(15)				
	2019/6/25 11:20	0.0020	0.025							
	2019/7/2 11:30	0.0017	0.021	0.42		ND(16)				
	2019/7/9 11:25	0.0037	0.047							
	2019/7/16 14:20	0.0015	0.027	0.32		ND(14)				
	2019/7/23 11:30	0.0022	0.033							
	2019/7/30 11:35	ND(0.0012)	0.011							
	2019/8/6 11:25	0.0021	0.026	ND(0.34)		ND(19)				
	2019/8/13 10:55	0.0023	0.033							
2019/8/20 10:55	ND(0.0013)	0.016	ND(0.34)		ND(14)					
2019/8/27 10:35	<b>0.0013</b>	<b>0.023</b>								
T-4	2019/5/14 8:30	ND(0.0012)	0.010							
	2019/5/24 8:20	0.0012	0.012							
	2019/5/28 11:00	0.0013	0.014							
	2019/6/4 14:40	ND(0.0012)	0.0095							
	2019/6/11 10:55	0.0013	0.017							
	2019/6/18 11:50	0.0011	0.011							
	2019/6/25 13:50	0.0015	0.019							
	2019/7/2 13:55	0.0016	0.017							
	2019/7/9 14:05	0.0019	0.027							
	2019/7/16 11:10	0.0016	0.024							
	2019/7/23 14:25	0.0034	0.039							
	2019/7/30 14:30	0.0019	0.022							
	2019/8/6 14:00	ND(0.0013)	0.010							
	2019/8/13 14:30	0.0018	0.021							
2019/8/20 13:40	ND(0.0014)	0.010								
2019/8/27 14:20	<b>ND(0.0014)</b>	<b>0.0098</b>								
T-6	2019/5/14 10:00	ND(0.0012)	0.0063							
	2019/5/24 11:35	0.0021	0.023	0.64		ND(16)				
	2019/5/28 9:50	ND(0.0013)	0.011							
	2019/6/4 10:15	0.0018	0.018	0.54		ND(16)				
	2019/6/11 9:20	ND(0.0012)	0.016							
	2019/6/18 10:25	ND(0.0013)	0.012	0.35		ND(18)				
	2019/6/25 9:40	ND(0.0012)	0.010							
	2019/7/2 9:25	0.0023	0.026	ND(0.35)		ND(17)				
	2019/7/9 9:25	0.0016	0.021							
	2019/7/16 8:55	0.0014	0.017	0.42		ND(16)				
	2019/7/23 10:05	ND(0.0013)	0.017							
	2019/7/30 10:10	ND(0.0014)	0.012							
	2019/8/6 9:35	0.0019	0.023	ND(0.36)		ND(16)				
	2019/8/13 9:15	0.0016	0.020							
2019/8/20 9:20	ND(0.00098)	0.012	0.36		ND(13)					
2019/8/27 8:55	<b>ND(0.0013)</b>	<b>0.011</b>								

○: 上層(表層~2m) Outer Layer

\* 太字下線データが今回追加分。 \* Boldface and underlined readings are new.

※1 東京電力ホールディングス㈱の発表(<http://www.tepco.co.jp/decommission/planaction/monitoring/index-j.html>)

※1 Press release of TEPCO (<http://www.tepco.co.jp/en/nu/fukushima-np/f1/smp/index-e.html>)

※1 NDの記載は、海水の放射性物質濃度の検出値が検出下限値を下回る場合。

※1 ND indicates the case that the detected radioactivity concentration in seawater was lower than the detection limits.

参考

reference

福島第一原発事故以前の海水のモニタリング結果:

(<https://radioactivity.nsr.go.jp/ja/contents/9000/8483/24/Beforedisaster.pdf>)

Results of radiation monitoring before the accident at TEPCO's Fukushima Daiichi Nuclear Power Station.

(<https://radioactivity.nsr.go.jp/ja/contents/9000/8483/24/Beforedisaster.pdf>)

Cs-134	Cs-137	H-3	全α (gross α)	全β (gross β)	Sr-90	Pu-238	Pu-239+240
放射性物質濃度(検出下限値)(Bq/L)(ND※2:不検出) Radioactivity concentration (Lower detection limit) (Bq/L) (ND※2: Not Detectable)							

T-5	2019/5/13 7:05	ND(0.0013)	0.0026					O
		ND(0.0012)	0.0022					L
	2019/5/24 6:57	ND(0.00098)	0.0027	ND(0.35)		ND(18)		O
		ND(0.0012)	0.0016					L
	2019/5/27 7:22	ND(0.0013)	0.0028					O
		ND(0.0014)	0.0015					L
	2019/6/3 7:06	ND(0.0013)	0.0031	ND(0.35)	ND(2.0)	ND(17)	0.0012	O
		ND(0.0013)	0.0017					L
	2019/6/14 6:57	ND(0.0011)	0.0022					O
		ND(0.0012)	0.0021					L
	2019/6/18 7:22	ND(0.0013)	0.0026	ND(0.33)		ND(15)		O
		ND(0.0013)	0.0018					L
	2019/6/26 7:17	ND(0.0011)	0.0040					O
		ND(0.0013)	0.0028					L
	2019/7/1 7:15	ND(0.0012)	0.0024	ND(0.34)	ND(2.4)	ND(15)	0.00080	O
		ND(0.0011)	0.0022					L
	2019/7/11 7:17	ND(0.0011)	0.0026					O
		ND(0.0012)	0.0028					L
	2019/7/17 7:29	ND(0.0012)	0.0019	ND(0.38)		ND(15)		O
		ND(0.0013)	0.0029					L
2019/7/22 7:09	ND(0.0012)	0.0024					O	
	ND(0.0012)	0.0029					L	
2019/7/29 7:19	ND(0.0012)	0.0017					O	
	ND(0.0012)	0.0024					L	
2019/8/6 7:23	ND(0.0012)	0.0018	0.40	ND(2.4)	ND(14)	0.0011	O	
	ND(0.0013)	0.0017					L	
2019/8/17 7:30	ND(0.0012)	0.0027					O	
	ND(0.0013)	0.0022					L	
2019/8/20 7:12	ND(0.0013)	0.0030					O	
	ND(0.0014)	0.0022					L	
2019/8/27 7:18	ND(0.0013)	0.0020					O	
	ND(0.0012)	0.0020					L	

T-D1	2019/5/13 7:46	ND(0.0012)	0.0045					O
		ND(0.0010)	0.0038					L
	2019/5/24 7:45	ND(0.0014)	0.0054	0.46		ND(18)		O
		ND(0.0014)	0.0042					L
	2019/5/28 8:00	ND(0.0011)	0.0048					O
		ND(0.0011)	0.0041					L
	2019/6/3 8:14	ND(0.0012)	0.0042	ND(0.35)	ND(2.3)	ND(17)	0.00068	O
		ND(0.0013)	0.0035					L
	2019/6/14 7:51	ND(0.0012)	0.0033					O
		ND(0.0013)	0.0030					L
	2019/6/17 8:04	ND(0.0013)	0.0094	ND(0.35)		ND(15)		O
		ND(0.0013)	0.0087					L
	2019/6/26 8:12	ND(0.0012)	0.0050					O
		ND(0.0013)	0.0047					L
	2019/7/2 7:54	ND(0.0012)	0.0071	ND(0.34)	ND(2.6)	ND(15)	0.00086	O
		ND(0.0014)	0.0058					L
	2019/7/10 7:55	ND(0.0012)	0.0055					O
		ND(0.0012)	0.0027					L
	2019/7/18 8:08	ND(0.0011)	0.0029	ND(0.36)		ND(18)		O
		ND(0.0012)	0.0028					L
2019/7/22 8:06	ND(0.0011)	0.0049					O	
	ND(0.0013)	0.0042					L	
2019/7/29 8:10	ND(0.0011)	0.0047					O	
	ND(0.0012)	0.0043					L	
2019/8/8 8:21	ND(0.0011)	0.0030	ND(0.36)	ND(2.6)	ND(16)	0.0011	O	
	ND(0.0011)	0.0046					L	
2019/8/17 10:04	ND(0.0014)	0.0078					O	
	ND(0.0014)	0.0039					L	
2019/8/20 7:45	ND(0.0012)	0.0053					O	
	ND(0.0011)	0.0044					L	
2019/8/26 7:57	ND(0.0010)	0.0024					O	
	ND(0.0010)	0.0049					L	

{ O: 上層(表層~2m) Outer Layer  
{ L: 下層(海底より2~3m上) Lower Layer

Cs-134	Cs-137	H-3	全α (gross α)	全β (gross β)	Sr-90	Pu-238	Pu-239+240
放射性物質濃度(検出下限値)(Bq/L)(ND※2:不検出) Radioactivity concentration (Lower detection limit) (Bq/L) (ND※2: Not Detectable)							

T-D5	2019/5/13 8:11	ND(0.0011)	0.0028						O
		ND(0.0012)	0.0038						L
	2019/5/24 8:13	ND(0.0014)	0.0031	0.56		ND(18)			O
		ND(0.0013)	0.0029						L
	2019/5/28 8:31	ND(0.0012)	0.011						O
		ND(0.0013)	0.0046						L
	2019/6/3 8:39	ND(0.0013)	0.0052	ND(0.35)	ND(2.3)	ND(17)	0.0011		O
		ND(0.0014)	0.0032						L
	2019/6/14 8:17	ND(0.0012)	0.0082						O
		ND(0.0013)	0.0033						L
	2019/6/17 8:30	ND(0.0011)	0.0034	ND(0.35)		ND(15)			O
		ND(0.0012)	0.0042						L
	2019/6/26 8:41	ND(0.0012)	0.0043						O
		ND(0.0012)	0.0037						L
	2019/7/2 8:17	ND(0.0012)	0.0059	ND(0.34)	ND(2.6)	ND(15)	0.0014		O
		ND(0.0012)	0.0023						L
	2019/7/10 8:19	ND(0.0013)	0.0066						O
		ND(0.0014)	0.0026						L
	2019/7/18 8:33	ND(0.0013)	0.0036	ND(0.36)		ND(18)			O
		ND(0.0011)	0.0036						L
2019/7/22 8:32	ND(0.0013)	0.0044						O	
	ND(0.0012)	0.0043						L	
2019/7/29 8:43	ND(0.0012)	0.0041						O	
	ND(0.0012)	0.0037						L	
2019/8/8 8:44	ND(0.0010)	0.0046	ND(0.36)	ND(2.6)	ND(16)	0.0013		O	
	ND(0.0012)	0.0056						L	
2019/8/17 10:46	ND(0.0012)	0.0056						O	
	ND(0.0011)	0.0036						L	
2019/8/20 8:17	ND(0.0013)	0.0039						O	
	ND(0.0013)	0.0040						L	
2019/8/26 8:22	ND(0.0013)	0.0028						O	
	ND(0.0012)	0.0039						L	
T-D9	2019/5/13 7:45	ND(0.0011)	0.0029						O
		ND(0.0013)	0.0042						L
	2019/5/24 7:40	ND(0.0013)	0.0025	0.51		ND(18)			O
		ND(0.0014)	0.0043						L
	2019/5/27 8:10	ND(0.0014)	0.0075						O
		ND(0.0012)	0.0037						L
	2019/6/3 7:56	ND(0.0012)	0.0068	ND(0.35)	ND(2.0)	ND(17)	0.0010		O
		ND(0.0011)	0.0036						L
	2019/6/14 8:06	0.0014	0.018						O
		ND(0.0011)	0.0042						L
	2019/6/18 8:15	ND(0.0013)	0.0041	0.39		ND(15)			O
		ND(0.0012)	0.0057						L
	2019/6/26 8:07	ND(0.0011)	0.0063						O
		ND(0.0010)	0.0037						L
	2019/7/1 8:51	ND(0.0012)	0.0042	ND(0.34)	ND(2.4)	ND(15)	0.0013		O
		ND(0.0012)	0.0048						L
	2019/7/11 8:11	ND(0.0011)	0.0046						O
		ND(0.0012)	0.0030						L
	2019/7/17 8:24	ND(0.0012)	0.0024	ND(0.38)		ND(15)			O
		ND(0.0012)	0.0038						L
2019/7/22 7:54	ND(0.0012)	0.0055						O	
	ND(0.0012)	0.0042						L	
2019/7/29 8:03	ND(0.0013)	0.0036						O	
	ND(0.0013)	0.0043						L	
2019/8/6 8:17	ND(0.0011)	0.010	ND(0.36)	ND(2.4)	ND(14)	0.00096		O	
	ND(0.0010)	0.0038						L	
2019/8/17 8:28	ND(0.0012)	0.0047						O	
	ND(0.0013)	0.0026						L	
2019/8/20 8:00	ND(0.0011)	0.0018						O	
	ND(0.0012)	0.0042						L	
2019/8/27 8:04	ND(0.0011)	0.0027						O	
	ND(0.0013)	0.0052						L	

O: 上層(表層~2m) Outer Layer  
 L: 下層(海底より2~3m上) Lower Layer

Cs-134

Cs-137

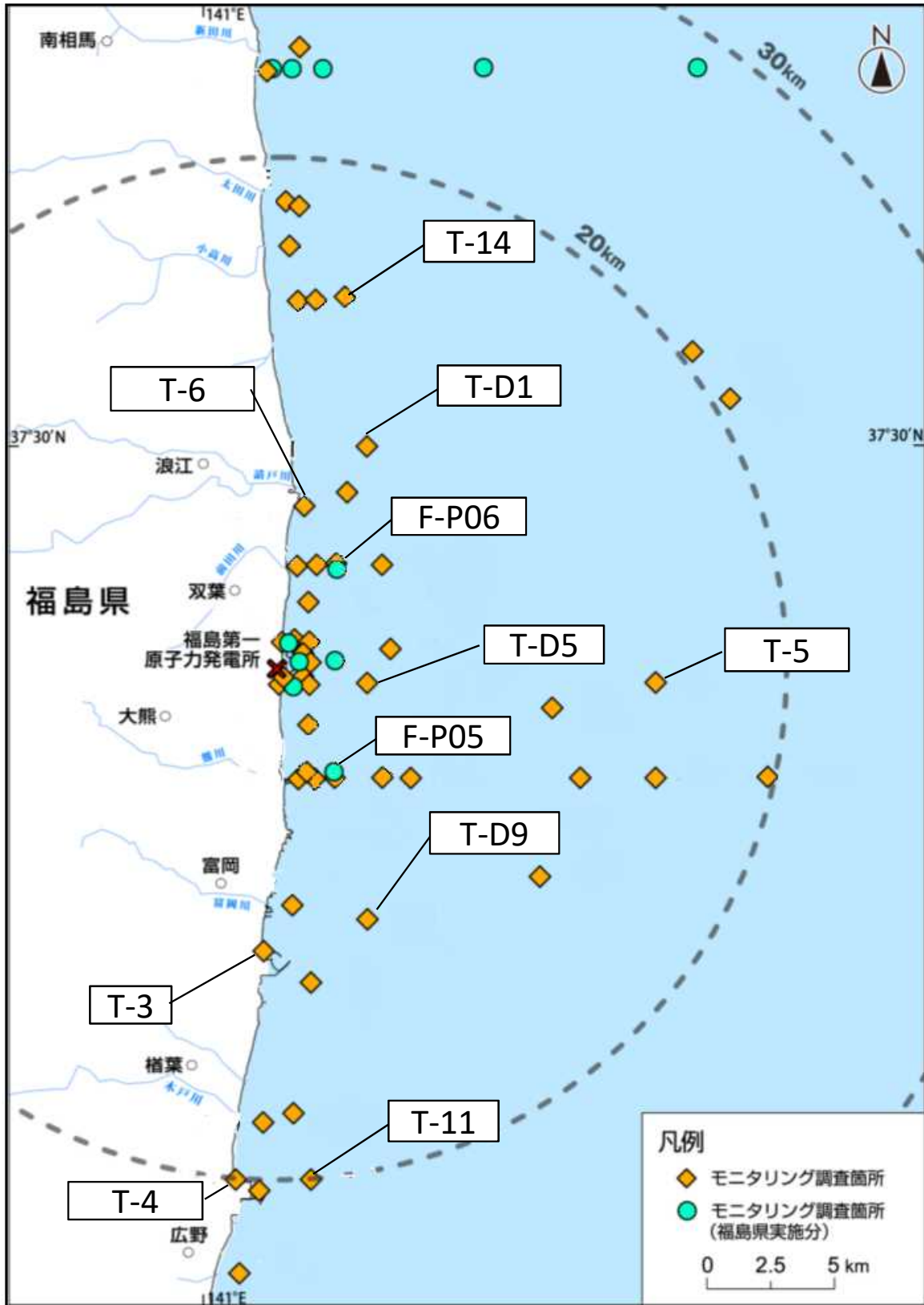
放射性物質濃度(検出下限値)(Bq/L)(ND※2:不検出)  
Radioactivity concentration (Lower detection limit) (Bq/L) (ND※2: Not Detectable)

T-11	2019/5/13 8:13	ND(0.0014)	0.0022	O
		0.0012	0.016	L
	2019/5/24 8:09	ND(0.0012)	0.0086	O
		ND(0.0013)	0.0061	L
	2019/5/27 8:41	ND(0.0013)	0.0052	O
		ND(0.0010)	0.0057	L
	2019/6/3 8:27	ND(0.0014)	0.0061	O
		ND(0.0010)	0.0034	L
	2019/6/14 8:39	ND(0.0011)	0.0056	O
		ND(0.0012)	0.0040	L
	2019/6/18 8:48	ND(0.0014)	0.0052	O
		ND(0.0014)	0.0092	L
	2019/6/26 8:35	ND(0.0012)	0.0057	O
		ND(0.0012)	0.0034	L
	2019/7/1 9:20	ND(0.0012)	0.0080	O
		ND(0.0013)	0.0056	L
	2019/7/11 8:43	ND(0.0012)	0.012	O
		ND(0.0012)	0.0052	L
	2019/7/17 9:01	ND(0.0013)	0.010	O
		ND(0.0014)	0.0043	L
2019/7/22 8:20	ND(0.0013)	0.0055	O	
	ND(0.0013)	0.0057	L	
2019/7/29 8:34	ND(0.0013)	0.0058	O	
	ND(0.0013)	0.0038	L	
2019/8/6 9:04	ND(0.0013)	0.0042	O	
	ND(0.0013)	0.0065	L	
2019/8/17 9:05	ND(0.0014)	0.0055	O	
	ND(0.0012)	0.0041	L	
2019/8/20 8:30	ND(0.0011)	0.0023	O	
	ND(0.0012)	0.0039	L	
2019/8/27 8:33	<b>ND(0.0011)</b>	<b>0.0028</b>	O	
	<b>ND(0.0012)</b>	<b>0.0048</b>	L	

T-14	2019/5/13 7:26	ND(0.0011)	0.0035	O
		ND(0.0011)	0.0031	L
	2019/5/24 7:21	ND(0.0012)	0.0086	O
		ND(0.0011)	0.0055	L
	2019/5/28 7:33	ND(0.0013)	0.0041	O
		ND(0.0012)	0.0044	L
	2019/6/3 7:37	ND(0.0012)	0.0045	O
		ND(0.0011)	0.0018	L
	2019/6/14 7:26	ND(0.0011)	0.0056	O
		ND(0.0010)	0.0053	L
	2019/6/17 7:44	ND(0.0011)	0.0040	O
		ND(0.0012)	0.0055	L
	2019/6/26 7:51	ND(0.0015)	0.0040	O
		ND(0.0015)	0.0039	L
	2019/7/2 7:27	ND(0.0011)	0.0042	O
		ND(0.0011)	0.0033	L
	2019/7/10 7:34	ND(0.0011)	0.0037	O
		ND(0.0012)	0.0028	L
	2019/7/18 7:48	ND(0.0013)	0.0041	O
		ND(0.0012)	0.0035	L
2019/7/22 7:46	ND(0.0013)	0.0048	O	
	ND(0.0013)	0.0032	L	
2019/7/29 7:45	ND(0.0011)	0.0042	O	
	ND(0.0013)	0.0040	L	
2019/8/8 7:47	ND(0.0011)	0.0032	O	
	ND(0.0011)	0.0038	L	
2019/8/17 9:33	ND(0.0012)	0.0046	O	
	ND(0.0011)	0.0034	L	
2019/8/20 7:25	ND(0.0013)	0.0031	O	
	ND(0.0014)	0.0050	L	
2019/8/26 7:38	<b>ND(0.0012)</b>	<b>0.0028</b>	O	
	<b>ND(0.0013)</b>	<b>0.0051</b>	L	

O: 上層(表層~2m) Outer Layer  
L: 下層(海底より2~3m上) Lower Layer

福島第一原子力発電所沿岸海域の海水採取ポイント  
 (Seawater sampling points near and around Fukushima Dai-ichi NPP)



\* 図中の×は東京電力ホールディングス(株)福島第一原子力発電所を示す。

\* The legends × indicate the locations of TEPCO Fukushima Dai-ichi NPP, respectively.