

福島第一原子力発電所沿岸海域の海水の放射性物質濃度測定結果
 (東京電力ホールディングス㈱の発表をもとに作成^{※1})
 試料採取日: 令和元年6月3日、17日、18日、7月1日、2日

Radioactivity concentration in the seawater around Fukushima Dai-ichi NPP
 (Based on the press release of TEPCO^{※1})
 Sampling Date: Jun 3, 17, 18, Jul 1, 2, 2019

令和元年8月6日
 Aug 6, 2019

Cs-134	Cs-137	H-3	全α (gross α)	全β (gross β)	Sr-90	Pu-238	Pu-239+240
--------	--------	-----	-----------------	-----------------	-------	--------	------------

放射性物質濃度 (検出下限値) (Bq/L) (ND^{※2}: 不検出)
 Radioactivity concentration (Lower detection limit) (Bq/L) (ND^{※2}: Not Detectable)

T-3	2019/3/19 13:45	0.0015	0.022	0.31		ND(16)				O
	2019/3/26 11:15	0.0021	0.020							O
	2019/4/2 11:40	0.0017	0.029	ND(0.33)		ND(14)				O
	2019/4/9 13:55	0.0023	0.022							O
	2019/4/16 13:50	0.0014	0.021	0.37		ND(12)				O
	2019/4/23 14:00	ND(0.0011)	0.014							O
	2019/4/29 9:25	0.0015	0.024							O
	2019/5/7 14:05	0.0014	0.016	ND(0.33)		ND(15)				O
	2019/5/14 11:10	ND(0.0012)	0.0042							O
	2019/5/24 10:10	ND(0.0013)	0.016	0.76		ND(14)				O
	2019/5/28 14:05	0.0014	0.019							O
	2019/6/4 13:45	0.0015	0.016	0.57		ND(15)				O
	2019/6/11 13:50	0.0020	0.025							O
	2019/6/18 14:30	0.0016	0.017	ND(0.35)		ND(15)				O
2019/6/25 11:20	0.0020	0.025							O	
2019/7/2 11:30	0.0017	0.021							O	
T-4	2019/3/19 11:40	0.0017	0.018							O
	2019/3/26 8:20	ND(0.0014)	0.011							O
	2019/4/2 14:20	0.0019	0.022							O
	2019/4/9 11:35	ND(0.0012)	0.015							O
	2019/4/16 11:20	ND(0.0012)	0.013							O
	2019/4/23 11:35	ND(0.0011)	0.011							O
	2019/4/29 8:20	0.0018	0.022							O
	2019/5/7 8:10	ND(0.0012)	0.0086							O
	2019/5/14 8:30	ND(0.0012)	0.010							O
	2019/5/24 8:20	0.0012	0.012							O
	2019/5/28 11:00	0.0013	0.014							O
	2019/6/4 14:40	ND(0.0012)	0.0095							O
	2019/6/11 10:55	0.0013	0.017							O
	2019/6/18 11:50	0.0011	0.011							O
2019/6/25 13:50	0.0015	0.019							O	
2019/7/2 13:55	0.0018	0.017							O	
T-6	2019/3/19 10:15	0.0018	0.020	0.51		ND(14)				O
	2019/3/26 9:40	0.0011	0.016							O
	2019/4/2 10:05	0.0018	0.019	0.30		ND(14)				O
	2019/4/9 10:30	ND(0.0012)	0.0088							O
	2019/4/16 10:00	0.0014	0.017	0.37		ND(19)				O
	2019/4/23 10:35	ND(0.0012)	0.0095							O
	2019/4/29 10:35	0.0012	0.015							O
	2019/5/7 9:35	ND(0.0014)	0.010	0.39		ND(17)				O
	2019/5/14 10:00	ND(0.0012)	0.0063							O
	2019/5/24 11:35	0.0021	0.023	0.64		ND(16)				O
	2019/5/28 9:50	ND(0.0013)	0.011							O
	2019/6/4 10:15	0.0018	0.018	0.54		ND(16)				O
	2019/6/11 9:20	ND(0.0012)	0.016							O
	2019/6/18 10:25	ND(0.0013)	0.012	0.35		ND(18)				O
2019/6/25 9:40	ND(0.0012)	0.010							O	
2019/7/2 9:25	0.0023	0.026							O	

O: 上層(表層~2m) Outer Layer

* 太字下線データが今回追加分。 * Boldface and underlined readings are new.

※1 東京電力ホールディングス㈱の発表(<http://www.tepco.co.jp/decommission/planaction/monitoring/index-j.html>)

※1 Press release of TEPCO (<http://www.tepco.co.jp/en/nu/fukushima-np/f1/smp/index-e.html>)

※1 NDの記載は、海水の放射性物質濃度の検出値が検出下限値を下回る場合。

※1 ND indicates the case that the detected radioactivity concentration in seawater was lower than the detection limits.

参考

reference

福島第一原発事故以前の海水のモニタリング結果:

(<https://radioactivity.nsr.go.jp/ja/contents/9000/8483/24/Beforedisaster.pdf>)

Results of radiation monitoring before the accident at TEPCO's Fukushima Daiichi Nuclear Power Station.

(<https://radioactivity.nsr.go.jp/ja/contents/9000/8483/24/Beforedisaster.pdf>)

Cs-134	Cs-137	H-3	全α (gross α)	全β (gross β)	Sr-90	Pu-238	Pu-239+240
放射性物質濃度(検出下限値)(Bq/L)(ND※2:不検出) Radioactivity concentration (Lower detection limit) (Bq/L) (ND※2: Not Detectable)							

T-5	2019/3/20 7:22	ND(0.0012) ND(0.0013)	0.0029 0.0023	ND(0.34)		ND(15)			O L	
	2019/3/25 6:16	ND(0.0011) ND(0.0012)	0.0021 0.0033						O L	
	2019/4/3 7:38	ND(0.0011) ND(0.0013)	0.0027 0.0024	ND(0.29)	ND(2.2)	ND(14)	0.0012		O L	
	2019/4/10 7:12	ND(0.00097) ND(0.0011)	0.0014 0.0021					ND(0.0000039)	ND(0.0000039)	O L
	2019/4/18 7:13	ND(0.0014) ND(0.0012)	0.0019 0.0021	ND(0.33)		ND(13)				O L
	2019/4/23 8:10	ND(0.0013) ND(0.0013)	0.0022 0.0033							O L
	2019/4/29 6:55	ND(0.0013) ND(0.0012)	0.0028 0.0036							O L
	2019/5/8 7:08	ND(0.0012) ND(0.0012)	0.0021 0.0022	ND(0.35)	ND(2.4)	ND(17)	0.0012			O L
	2019/5/13 7:05	ND(0.0013) ND(0.0012)	0.0026 0.0022							O L
	2019/5/24 6:57	ND(0.00098) ND(0.0012)	0.0027 0.0016	ND(0.35)		ND(18)				O L
	2019/5/27 7:22	ND(0.0013) ND(0.0014)	0.0028 0.0015							O L
	2019/6/3 7:06	ND(0.0013) ND(0.0013)	0.0031 0.0017	ND(0.35)	ND(2.0)	ND(17)	0.0012			O L
	2019/6/14 6:57	ND(0.0011) ND(0.0012)	0.0022 0.0021							O L
	2019/6/18 7:22	ND(0.0013) ND(0.0013)	0.0026 0.0018	ND(0.33)		ND(15)				O L
	2019/6/26 7:17	ND(0.0011) ND(0.0013)	0.0040 0.0028							O L
	2019/7/1 7:15	ND(0.0012) ND(0.0011)	0.0024 0.0022							O L

T-D1	2019/3/20 8:05	ND(0.0011) ND(0.0011)	0.0047 0.0056	ND(0.34)		ND(15)			O L	
	2019/3/25 7:00	ND(0.0012) ND(0.0013)	0.0042 0.0048						O L	
	2019/4/1 8:14	ND(0.0012) ND(0.0013)	0.0050 0.0060	ND(0.34)	ND(2.1)	ND(15)	0.00093		O L	
	2019/4/8 8:18	ND(0.0013) ND(0.0014)	0.0043 0.0032					ND(0.0000054)	ND(0.0000052)	O L
	2019/4/17 7:53	ND(0.0014) ND(0.0012)	0.0043 0.0040	ND(0.35)		ND(14)				O L
	2019/4/22 7:47	ND(0.0014) ND(0.0013)	0.0030 0.0031							O L
	2019/4/29 7:47	ND(0.0011) ND(0.0013)	0.0035 0.0054							O L
	2019/5/8 8:11	ND(0.0013) ND(0.0013)	0.0046 0.0048	ND(0.35)	ND(2.4)	ND(17)	0.0011			O L
	2019/5/13 7:46	ND(0.0012) ND(0.0010)	0.0045 0.0038							O L
	2019/5/24 7:45	ND(0.0014) ND(0.0014)	0.0054 0.0042	0.46		ND(18)				O L
	2019/5/28 8:00	ND(0.0011) ND(0.0011)	0.0048 0.0041							O L
	2019/6/3 8:14	ND(0.0012) ND(0.0013)	0.0042 0.0035	ND(0.35)	ND(2.3)	ND(17)	0.00068			O L
	2019/6/14 7:51	ND(0.0012) ND(0.0013)	0.0033 0.0030							O L
	2019/6/17 8:04	ND(0.0013) ND(0.0013)	0.0094 0.0087	ND(0.35)		ND(15)				O L
	2019/6/26 8:12	ND(0.0012) ND(0.0013)	0.0050 0.0047							O L
	2019/7/2 7:54	ND(0.0012) ND(0.0014)	0.0071 0.0058							O L

{ O: 上層(表層~2m) Outer Layer
L: 下層(海底より2~3m上) Lower Layer

Cs-134	Cs-137	H-3	全α (gross α)	全β (gross β)	Sr-90	Pu-238	Pu-239+240
放射性物質濃度(検出下限値)(Bq/L)(ND※2:不検出) Radioactivity concentration (Lower detection limit) (Bq/L) (ND※2: Not Detectable)							

T-D5	2019/3/20 8:31	ND(0.0014)	0.011	ND(0.34)		ND(15)			O	
		ND(0.0012)	0.0073						L	
	2019/3/25 7:28	ND(0.0013)	0.0067						O	
		ND(0.0014)	0.0065						L	
	2019/4/1 8:49	ND(0.0013)	0.0043	0.42	ND(2.1)	ND(15)	0.0016		O	
		ND(0.0012)	0.0050						L	
	2019/4/8 8:46	ND(0.0010)	0.0042					ND(0.0000055)	ND(0.0000051)	O
		ND(0.0013)	0.0032							L
	2019/4/17 8:17	ND(0.0011)	0.0073	0.37		ND(14)				O
		ND(0.0012)	0.0054							L
	2019/4/22 8:15	ND(0.0012)	0.0065							O
		ND(0.0014)	0.0054							L
	2019/4/29 8:14	ND(0.0013)	0.0036							O
		ND(0.0014)	0.0045							L
	2019/5/8 8:43	ND(0.0012)	0.0028	ND(0.35)	ND(2.4)	ND(17)	0.0011			O
		ND(0.0013)	0.0040							L
	2019/5/13 8:11	ND(0.0011)	0.0028							O
		ND(0.0012)	0.0038							L
2019/5/24 8:13	ND(0.0014)	0.0031	0.56		ND(18)				O	
	ND(0.0013)	0.0029							L	
2019/5/28 8:31	ND(0.0012)	0.011							O	
	ND(0.0013)	0.0046							L	
2019/6/3 8:39	ND(0.0013)	0.0052	ND(0.35)	ND(2.3)	ND(17)	0.0011			O	
	ND(0.0014)	0.0032							L	
2019/6/14 8:17	ND(0.0012)	0.0082							O	
	ND(0.0013)	0.0033							L	
2019/6/17 8:30	ND(0.0011)	0.0034	ND(0.35)		ND(15)				O	
	ND(0.0012)	0.0042							L	
2019/6/26 8:41	ND(0.0012)	0.0043							O	
	ND(0.0012)	0.0037							L	
2019/7/2 8:17	ND(0.0012)	0.0059							O	
	ND(0.0012)	0.0023							L	

T-D9	2019/3/20 8:08	ND(0.0013)	0.0083	ND(0.34)		ND(15)			O	
		ND(0.0014)	0.0078						L	
	2019/3/25 7:01	ND(0.0010)	0.0037						O	
		ND(0.0011)	0.0052						L	
	2019/4/1 7:46	ND(0.0011)	0.0052	0.36	ND(2.2)	ND(15)	0.0015		O	
		ND(0.0012)	0.0065						L	
	2019/4/10 8:03	ND(0.0013)	0.0036					ND(0.0000077)	ND(0.0000079)	O
		ND(0.0013)	0.0037							L
	2019/4/18 8:11	ND(0.0013)	0.0075	ND(0.33)		ND(13)				O
		ND(0.0012)	0.0041							L
	2019/4/23 9:16	ND(0.0013)	0.0040							O
		ND(0.0012)	0.0048							L
	2019/4/29 7:37	ND(0.0013)	0.0065							O
		ND(0.0012)	0.0043							L
	2019/5/8 8:14	ND(0.0013)	0.0033	ND(0.35)	ND(2.4)	ND(17)	0.0014			O
		ND(0.0014)	0.0045							L
	2019/5/13 7:45	ND(0.0011)	0.0029							O
		ND(0.0013)	0.0042							L
2019/5/24 7:40	ND(0.0013)	0.0025	0.51		ND(18)				O	
	ND(0.0014)	0.0043							L	
2019/5/27 8:10	ND(0.0014)	0.0075							O	
	ND(0.0012)	0.0037							L	
2019/6/3 7:56	ND(0.0012)	0.0068	ND(0.35)	ND(2.0)	ND(17)	0.0010			O	
	ND(0.0011)	0.0036							L	
2019/6/14 8:06	0.0014	0.018							O	
	ND(0.0011)	0.0042							L	
2019/6/18 8:15	ND(0.0013)	0.0041	0.39		ND(15)				O	
	ND(0.0012)	0.0057							L	
2019/6/26 8:07	ND(0.0011)	0.0063							O	
	ND(0.0010)	0.0037							L	
2019/7/1 8:51	ND(0.0012)	0.0042							O	
	ND(0.0012)	0.0048							L	

O: 上層(表層~2m) Outer Layer
 L: 下層(海底より2~3m上) Lower Layer

Cs-134

Cs-137

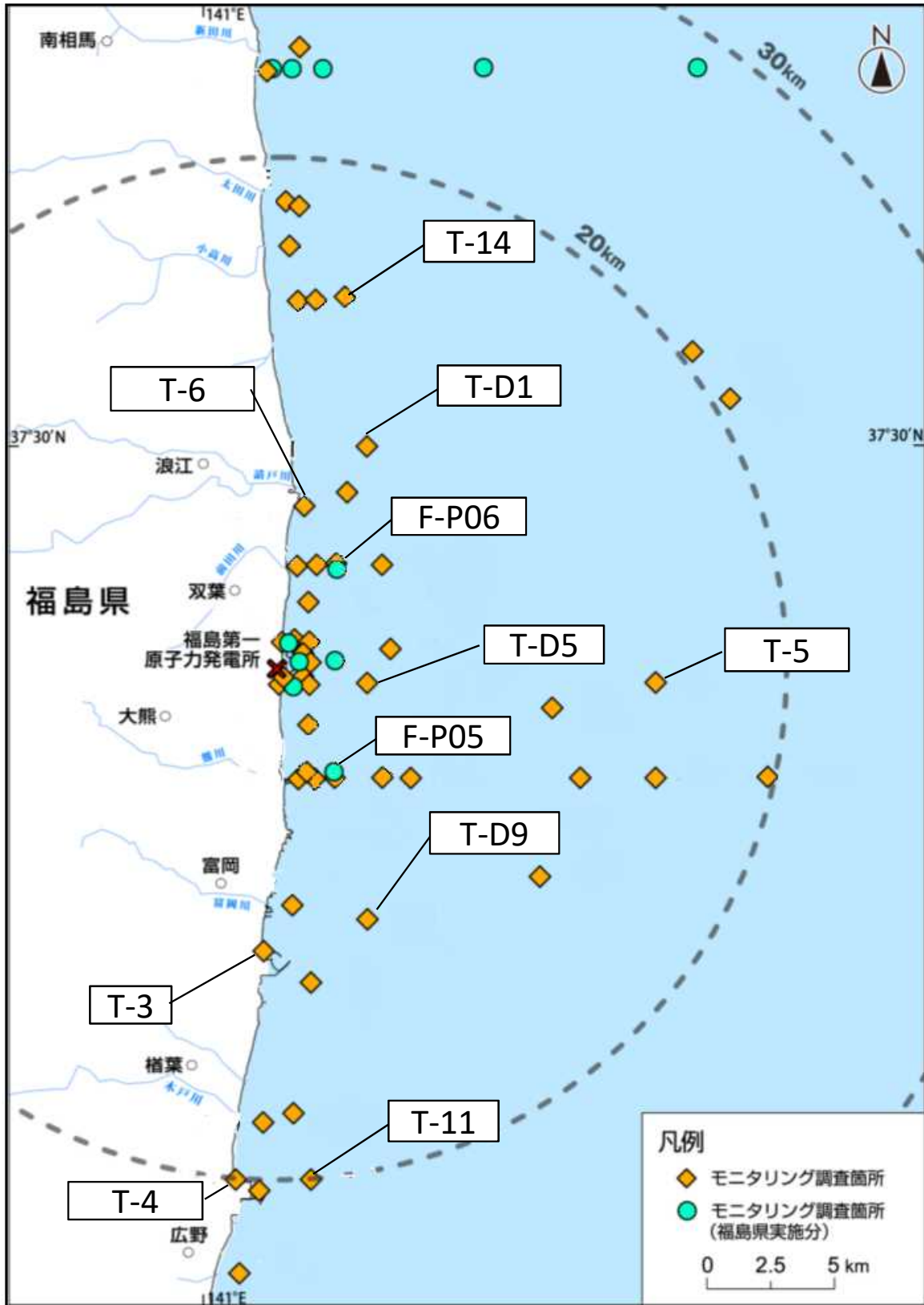
放射性物質濃度(検出下限値)(Bq/L)(ND※2:不検出)
Radioactivity concentration (Lower detection limit) (Bq/L) (ND※2: Not Detectable)

T-11	2019/3/20 8:36	ND(0.0014)	0.0064	O
		ND(0.0013)	0.0064	L
	2019/3/25 7:30	ND(0.0013)	0.0077	O
		ND(0.0014)	0.0070	L
	2019/4/1 7:05	ND(0.0014)	0.012	O
		ND(0.0014)	0.012	L
	2019/4/10 8:43	ND(0.0013)	0.0041	O
		ND(0.0013)	0.0047	L
	2019/4/18 8:46	ND(0.0012)	0.0053	O
		ND(0.0014)	0.0045	L
	2019/4/23 9:54	ND(0.0014)	0.0048	O
		ND(0.0010)	0.0062	L
	2019/4/29 8:05	ND(0.0013)	0.0086	O
		ND(0.0014)	0.0037	L
	2019/5/8 8:51	ND(0.0013)	0.0042	O
		ND(0.0014)	0.0045	L
	2019/5/13 8:13	ND(0.0014)	0.0022	O
		0.0012	0.016	L
	2019/5/24 8:09	ND(0.0012)	0.0086	O
		ND(0.0013)	0.0061	L
2019/5/27 8:41	ND(0.0013)	0.0052	O	
	ND(0.0010)	0.0057	L	
2019/6/3 8:27	ND(0.0014)	0.0061	O	
	ND(0.0010)	0.0034	L	
2019/6/14 8:39	ND(0.0011)	0.0056	O	
	ND(0.0012)	0.0040	L	
2019/6/18 8:48	ND(0.0014)	0.0052	O	
	ND(0.0014)	0.0092	L	
2019/6/26 8:35	ND(0.0012)	0.0057	O	
	ND(0.0012)	0.0034	L	
2019/7/1 9:20	ND(0.0012)	0.0080	O	
	ND(0.0013)	0.0056	L	

T-14	2019/3/20 7:45	ND(0.0013)	0.0050	O
		ND(0.0014)	0.0049	L
	2019/3/25 6:40	ND(0.0013)	0.0040	O
		ND(0.0013)	0.0048	L
	2019/4/1 7:42	ND(0.0014)	0.0053	O
		ND(0.0012)	0.0056	L
	2019/4/8 7:59	ND(0.0013)	0.0033	O
		ND(0.0012)	0.0035	L
	2019/4/17 7:33	ND(0.0014)	0.0049	O
		ND(0.0013)	0.0042	L
	2019/4/22 7:27	ND(0.0013)	0.0031	O
		ND(0.0014)	0.0052	L
	2019/4/29 7:26	ND(0.0010)	0.0040	O
		0.0013	0.0064	L
	2019/5/8 7:25	ND(0.0015)	0.0039	O
		ND(0.0015)	0.0044	L
	2019/5/13 7:26	ND(0.0011)	0.0035	O
		ND(0.0011)	0.0031	L
	2019/5/24 7:21	ND(0.0012)	0.0086	O
		ND(0.0011)	0.0055	L
2019/5/28 7:33	ND(0.0013)	0.0041	O	
	ND(0.0012)	0.0044	L	
2019/6/3 7:37	ND(0.0012)	0.0045	O	
	ND(0.0011)	0.0018	L	
2019/6/14 7:26	ND(0.0011)	0.0056	O	
	ND(0.0010)	0.0053	L	
2019/6/17 7:44	ND(0.0011)	0.0040	O	
	ND(0.0012)	0.0055	L	
2019/6/26 7:51	ND(0.0015)	0.0040	O	
	ND(0.0015)	0.0039	L	
2019/7/2 7:27	ND(0.0011)	0.0042	O	
	ND(0.0011)	0.0033	L	

O: 上層(表層~2m) Outer Layer
L: 下層(海底より2~3m上) Lower Layer

福島第一原子力発電所沿岸海域の海水採取ポイント
 (Seawater sampling points near and around Fukushima Dai-ichi NPP)



* 図中の×は東京電力ホールディングス(株)福島第一原子力発電所を示す。

* The legends × indicate the locations of TEPCO Fukushima Dai-ichi NPP, respectively.