

福島第一原子力発電所沿岸海域の海水の放射性物質濃度測定結果  
 (東京電力ホールディングス㈱の発表をもとに作成<sup>※1</sup>)  
 試料採取日: 令和元年6月4日、11日、14日

Radioactivity concentration in the seawater around Fukushima Dai-ichi NPP  
 (Based on the press release of TEPCO<sup>※1</sup>)  
 Sampling Date: Jun 4, 11, 14, 2019

令和元年7月16日  
 Jul 16, 2019

Cs-134	Cs-137	H-3	全α (gross α)	全β (gross β)	Sr-90	Pu-238	Pu-239+240
放射性物質濃度 (検出下限値) (Bq/L) (ND <sup>※2</sup> : 不検出)							
Radioactivity concentration (Lower detection limit) (Bq/L) (ND <sup>※2</sup> : Not Detectable)							

	2019/2/26 11:25	0.0015	0.014						
T-3	2019/3/5 11:25	0.0030	0.033	ND(0.30)		ND(16)			
	2019/3/12 11:15	0.0036	0.043						
	2019/3/19 13:45	0.0015	0.022	0.31		ND(16)			
	2019/3/26 11:15	0.0021	0.020						
	2019/4/2 11:40	0.0017	0.029	ND(0.33)		ND(14)			
	2019/4/9 13:55	0.0023	0.022						
	2019/4/16 13:50	0.0014	0.021	0.37		ND(12)			
	2019/4/23 14:00	ND(0.0011)	0.014						
	2019/4/29 9:25	0.0015	0.024						
	2019/5/7 14:05	0.0014	0.016	ND(0.33)		ND(15)			
	2019/5/14 11:10	ND(0.0012)	0.0042						
	2019/5/24 10:10	ND(0.0013)	0.016	0.76		ND(14)			
	2019/5/28 14:05	0.0014	0.019						
	2019/6/4 13:45	0.0015	0.016	0.57		ND(15)			
2019/6/11 13:50	<b>0.0020</b>	<b>0.025</b>							
T-4	2019/2/26 13:55	ND(0.0012)	0.0094						
	2019/3/5 15:05	ND(0.0014)	0.016						
	2019/3/12 15:05	0.0015	0.025						
	2019/3/19 11:40	0.0017	0.018						
	2019/3/26 8:20	ND(0.0014)	0.011						
	2019/4/2 14:20	0.0019	0.022						
	2019/4/9 11:35	ND(0.0012)	0.015						
	2019/4/16 11:20	ND(0.0012)	0.013						
	2019/4/23 11:35	ND(0.0011)	0.011						
	2019/4/29 8:20	0.0018	0.022						
	2019/5/7 8:10	ND(0.0012)	0.0086						
	2019/5/14 8:30	ND(0.0012)	0.010						
	2019/5/24 8:20	0.0012	0.012						
	2019/5/28 11:00	0.0013	0.014						
2019/6/4 14:40	ND(0.0012)	0.0095							
2019/6/11 10:55	<b>0.0013</b>	<b>0.017</b>							
T-6	2019/2/26 9:55	ND(0.0013)	0.013						
	2019/3/5 9:45	0.0015	0.014	ND(0.34)		ND(17)			
	2019/3/12 9:45	0.0014	0.021						
	2019/3/19 10:15	0.0018	0.020	0.51		ND(14)			
	2019/3/26 9:40	0.0011	0.016						
	2019/4/2 10:05	0.0018	0.019	0.30		ND(14)			
	2019/4/9 10:30	ND(0.0012)	0.0088						
	2019/4/16 10:00	0.0014	0.017	0.37		ND(19)			
	2019/4/23 10:35	ND(0.0012)	0.0095						
	2019/4/29 10:35	0.0012	0.015						
	2019/5/7 9:35	ND(0.0014)	0.010	0.39		ND(17)			
	2019/5/14 10:00	ND(0.0012)	0.0063						
	2019/5/24 11:35	0.0021	0.023	0.64		ND(16)			
	2019/5/28 9:50	ND(0.0013)	0.011						
2019/6/4 10:15	0.0018	0.018	0.54		ND(16)				
2019/6/11 9:20	<b>ND(0.0012)</b>	<b>0.016</b>							

○: 上層(表層~2m) Outer Layer

\* 太字下線データが今回追加分。 \* Boldface and underlined readings are new.

※1 東京電力ホールディングス㈱の発表(<http://www.tepco.co.jp/decommission/planaction/monitoring/index-j.html>)

※1 Press release of TEPCO (<http://www.tepco.co.jp/en/nu/fukushima-np/f1/smp/index-e.html>)

※1 NDの記載は、海水の放射性物質濃度の検出値が検出下限値を下回る場合。

※1 ND indicates the case that the detected radioactivity concentration in seawater was lower than the detection limits.

参考

reference

福島第一原発事故以前の海水のモニタリング結果:

(<https://radioactivity.nsr.go.jp/ja/contents/9000/8483/24/Beforedisaster.pdf>)

Results of radiation monitoring before the accident at TEPCO's Fukushima Daiichi Nuclear Power Station.

(<https://radioactivity.nsr.go.jp/ja/contents/9000/8483/24/Beforedisaster.pdf>)

Cs-134	Cs-137	H-3	全α (gross α)	全β (gross β)	Sr-90	Pu-238	Pu-239+240
放射性物質濃度(検出下限値)(Bq/L)(ND※2:不検出) Radioactivity concentration (Lower detection limit) (Bq/L) (ND※2: Not Detectable)							

T-5	2019/2/27 7:32	ND(0.0012)	0.0024						O
		ND(0.0012)	0.0024						L
	2019/3/9 7:17	ND(0.0010)	0.0025	ND(0.33)	ND(2.5)	ND(16)	0.00086		O
		ND(0.0011)	0.0025						L
	2019/3/13 8:14	ND(0.0014)	0.0028						O
		ND(0.0014)	0.0032						L
	2019/3/20 7:22	ND(0.0012)	0.0029	ND(0.34)		ND(15)			O
		ND(0.0013)	0.0023						L
	2019/3/25 6:16	ND(0.0011)	0.0021						O
		ND(0.0012)	0.0033						L
	2019/4/3 7:38	ND(0.0011)	0.0027	ND(0.29)	ND(2.2)	ND(14)	0.0012		O
		ND(0.0013)	0.0024						L
	2019/4/10 7:12	ND(0.00097)	0.0014				ND(0.0000039)	ND(0.0000039)	O
		ND(0.0011)	0.0021						L
	2019/4/18 7:13	ND(0.0014)	0.0019	ND(0.33)		ND(13)			O
		ND(0.0012)	0.0021						L
	2019/4/23 8:10	ND(0.0013)	0.0022						O
		ND(0.0013)	0.0033						L
	2019/4/29 6:55	ND(0.0013)	0.0028						O
		ND(0.0012)	0.0036						L
2019/5/8 7:08	ND(0.0012)	0.0021	ND(0.35)	ND(2.4)	ND(17)	0.0012		O	
	ND(0.0012)	0.0022						L	
2019/5/13 7:05	ND(0.0013)	0.0026						O	
	ND(0.0012)	0.0022						L	
2019/5/24 6:57	ND(0.00098)	0.0027	ND(0.35)		ND(18)			O	
	ND(0.0012)	0.0016						L	
2019/5/27 7:22	ND(0.0013)	0.0028						O	
	ND(0.0014)	0.0015						L	
2019/6/3 7:06	ND(0.0013)	0.0031						O	
	ND(0.0013)	0.0017						L	
2019/6/14 6:57	<b>ND(0.0011)</b>	<b>0.0022</b>						O	
	<b>ND(0.0012)</b>	<b>0.0021</b>						L	

T-D1	2019/2/28 8:17	0.0012	0.012						O
		ND(0.0010)	0.0057						L
	2019/3/9 8:37	ND(0.0013)	0.0053	0.35	ND(2.5)	ND(16)	0.0013		O
		ND(0.0013)	0.0043						L
	2019/3/13 7:58	ND(0.0011)	0.0094						O
		ND(0.0012)	0.0098						L
	2019/3/20 8:05	ND(0.0011)	0.0047	ND(0.34)		ND(15)			O
		ND(0.0011)	0.0056						L
	2019/3/25 7:00	ND(0.0012)	0.0042						O
		ND(0.0013)	0.0048						L
	2019/4/1 8:14	ND(0.0012)	0.0050	ND(0.34)	ND(2.1)	ND(15)	0.00093		O
		ND(0.0013)	0.0060						L
	2019/4/8 8:18	ND(0.0013)	0.0043				ND(0.0000054)	ND(0.0000052)	O
		ND(0.0014)	0.0032						L
	2019/4/17 7:53	ND(0.0014)	0.0043	ND(0.35)		ND(14)			O
		ND(0.0012)	0.0040						L
	2019/4/22 7:47	ND(0.0014)	0.0030						O
		ND(0.0013)	0.0031						L
	2019/4/29 7:47	ND(0.0011)	0.0035						O
		ND(0.0013)	0.0054						L
2019/5/8 8:11	ND(0.0013)	0.0046	ND(0.35)	ND(2.4)	ND(17)	0.0011		O	
	ND(0.0013)	0.0048						L	
2019/5/13 7:46	ND(0.0012)	0.0045						O	
	ND(0.0010)	0.0038						L	
2019/5/24 7:45	ND(0.0014)	0.0054	0.46		ND(18)			O	
	ND(0.0014)	0.0042						L	
2019/5/28 8:00	ND(0.0011)	0.0048						O	
	ND(0.0011)	0.0041						L	
2019/6/3 8:14	ND(0.0012)	0.0042						O	
	ND(0.0013)	0.0035						L	
2019/6/14 7:51	<b>ND(0.0012)</b>	<b>0.0033</b>						O	
	<b>ND(0.0013)</b>	<b>0.0030</b>						L	

○: 上層(表層~2m) Outer Layer  
 □: 下層(海底より2~3m上) Lower Layer

Cs-134	Cs-137	H-3	全α (gross α)	全β (gross β)	Sr-90	Pu-238	Pu-239+240
放射性物質濃度(検出下限値)(Bq/L) (ND※2: 不検出) Radioactivity concentration (Lower detection limit) (Bq/L) (ND※2: Not Detectable)							

T-D5	2019/2/28 8:44	ND(0.0012)	0.0048						O
		ND(0.0012)	0.0040						L
	2019/3/6 7:04	ND(0.0011)	0.0050	0.48	ND(1.9)	ND(15)	0.0015		O
		ND(0.0012)	0.0035						L
	2019/3/13 8:26	ND(0.0012)	0.010						O
		ND(0.0013)	0.0057						L
	2019/3/20 8:31	ND(0.0014)	0.011	ND(0.34)		ND(15)			O
		ND(0.0012)	0.0073						L
	2019/3/25 7:28	ND(0.0013)	0.0067						O
		ND(0.0014)	0.0065						L
	2019/4/1 8:49	ND(0.0013)	0.0043	0.42	ND(2.1)	ND(15)	0.0016		O
		ND(0.0012)	0.0050						L
	2019/4/8 8:46	ND(0.0010)	0.0042				ND(0.0000055)	ND(0.0000051)	O
		ND(0.0013)	0.0032						L
	2019/4/17 8:17	ND(0.0011)	0.0073	0.37		ND(14)			O
		ND(0.0012)	0.0054						L
	2019/4/22 8:15	ND(0.0012)	0.0065						O
		ND(0.0014)	0.0054						L
2019/4/29 8:14	ND(0.0013)	0.0036						O	
	ND(0.0014)	0.0045						L	
2019/5/8 8:43	ND(0.0012)	0.0028	ND(0.35)	ND(2.4)	ND(17)	0.0011		O	
	ND(0.0013)	0.0040						L	
2019/5/13 8:11	ND(0.0011)	0.0028						O	
	ND(0.0012)	0.0038						L	
2019/5/24 8:13	ND(0.0014)	0.0031	0.56		ND(18)			O	
	ND(0.0013)	0.0029						L	
2019/5/28 8:31	ND(0.0012)	0.011						O	
	ND(0.0013)	0.0046						L	
2019/6/3 8:39	ND(0.0013)	0.0052						O	
	ND(0.0014)	0.0032						L	
2019/6/14 8:17	<b>ND(0.0012)</b>	<b>0.0082</b>						O	
	<b>ND(0.0013)</b>	<b>0.0033</b>						L	
T-D9	2019/2/27 8:25	ND(0.0014)	0.0034						O
		ND(0.0014)	0.0067						L
	2019/3/6 6:23	ND(0.0013)	0.0065	ND(0.35)	ND(1.9)	ND(15)	0.00099		O
		ND(0.0013)	0.0079						L
	2019/3/13 9:27	ND(0.0012)	0.0076						O
		ND(0.0012)	0.0045						L
	2019/3/20 8:08	ND(0.0013)	0.0083	ND(0.34)		ND(15)			O
		ND(0.0014)	0.0078						L
	2019/3/25 7:01	ND(0.0010)	0.0037						O
		ND(0.0011)	0.0052						L
	2019/4/1 7:46	ND(0.0011)	0.0052	0.36	ND(2.2)	ND(15)	0.0015		O
		ND(0.0012)	0.0065						L
	2019/4/10 8:03	ND(0.0013)	0.0036				ND(0.0000077)	ND(0.0000079)	O
		ND(0.0013)	0.0037						L
	2019/4/18 8:11	ND(0.0013)	0.0075	ND(0.33)		ND(13)			O
		ND(0.0012)	0.0041						L
	2019/4/23 9:16	ND(0.0013)	0.0040						O
		ND(0.0012)	0.0048						L
2019/4/29 7:37	ND(0.0013)	0.0065						O	
	ND(0.0012)	0.0043						L	
2019/5/8 8:14	ND(0.0013)	0.0033	ND(0.35)	ND(2.4)	ND(17)	0.0014		O	
	ND(0.0014)	0.0045						L	
2019/5/13 7:45	ND(0.0011)	0.0029						O	
	ND(0.0013)	0.0042						L	
2019/5/24 7:40	ND(0.0013)	0.0025	0.51		ND(18)			O	
	ND(0.0014)	0.0043						L	
2019/5/27 8:10	ND(0.0014)	0.0075						O	
	ND(0.0012)	0.0037						L	
2019/6/3 7:56	ND(0.0012)	0.0068						O	
	ND(0.0011)	0.0036						L	
2019/6/14 8:06	<b>0.0014</b>	<b>0.018</b>						O	
	<b>ND(0.0011)</b>	<b>0.0042</b>						L	

O: 上層(表層~2m) Outer Layer  
 L: 下層(海底より2~3m上) Lower Layer

Cs-134

Cs-137

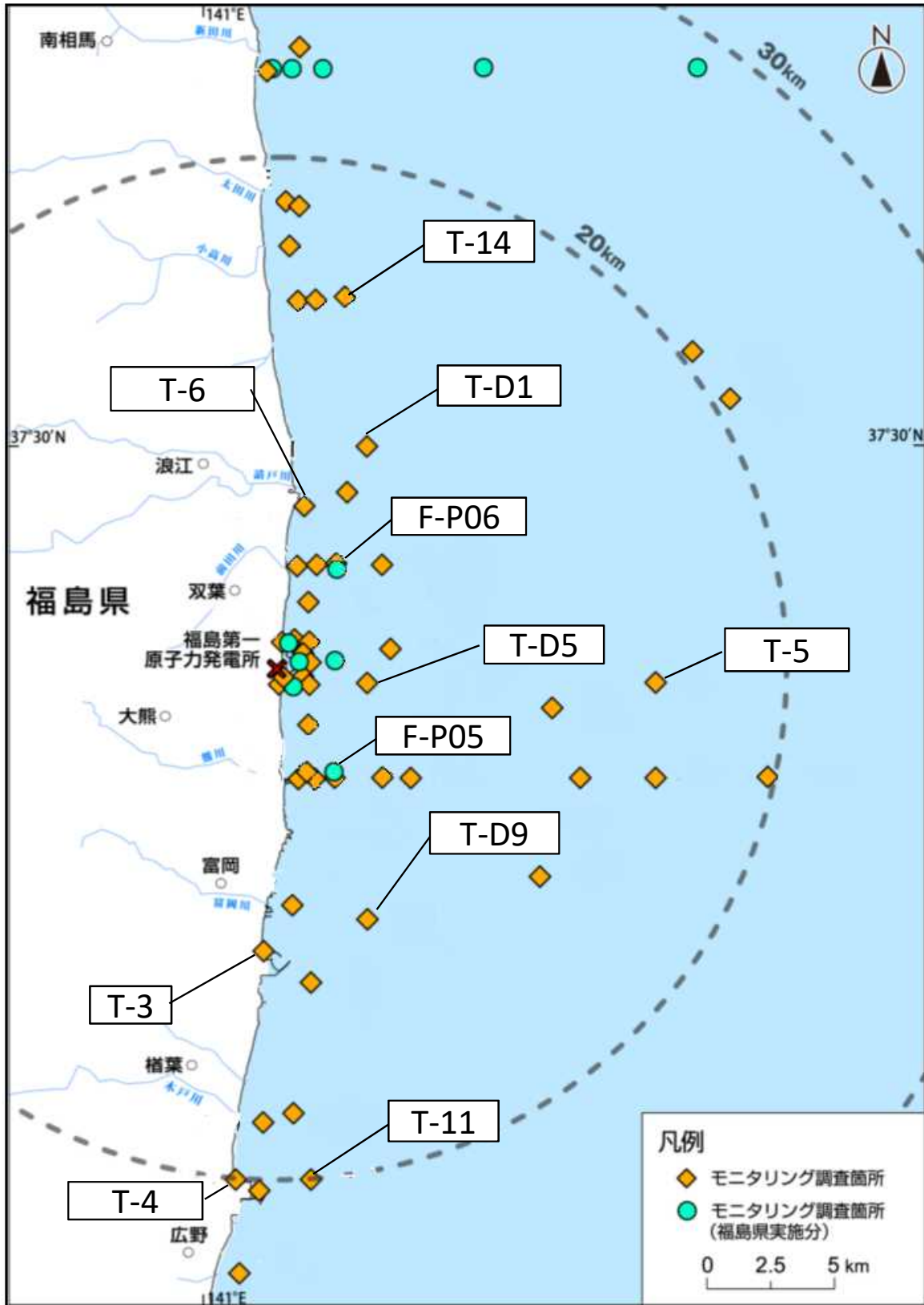
放射性物質濃度(検出下限値)(Bq/L)(ND※2:不検出)  
Radioactivity concentration (Lower detection limit) (Bq/L) (ND※2: Not Detectable)

T-11	2019/2/27 8:54	ND(0.0013)	0.0030	O
		ND(0.0014)	0.0045	L
	2019/3/6 5:53	ND(0.0012)	0.0071	O
		ND(0.0012)	0.0075	L
	2019/3/13 10:05	ND(0.0013)	0.0076	O
		ND(0.0013)	0.0072	L
	2019/3/20 8:36	ND(0.0014)	0.0064	O
		ND(0.0013)	0.0064	L
	2019/3/25 7:30	ND(0.0013)	0.0077	O
		ND(0.0014)	0.0070	L
	2019/4/1 7:05	ND(0.0014)	0.012	O
		ND(0.0014)	0.012	L
	2019/4/10 8:43	ND(0.0013)	0.0041	O
		ND(0.0013)	0.0047	L
	2019/4/18 8:46	ND(0.0012)	0.0053	O
		ND(0.0014)	0.0045	L
	2019/4/23 9:54	ND(0.0014)	0.0048	O
		ND(0.0010)	0.0062	L
	2019/4/29 8:05	ND(0.0013)	0.0086	O
		ND(0.0014)	0.0037	L
2019/5/8 8:51	ND(0.0013)	0.0042	O	
	ND(0.0014)	0.0045	L	
2019/5/13 8:13	ND(0.0014)	0.0022	O	
	0.0012	0.016	L	
2019/5/24 8:09	ND(0.0012)	0.0086	O	
	ND(0.0013)	0.0061	L	
2019/5/27 8:41	ND(0.0013)	0.0052	O	
	ND(0.0010)	0.0057	L	
2019/6/3 8:27	ND(0.0014)	0.0061	O	
	ND(0.0010)	0.0034	L	
2019/6/14 8:39	<b>ND(0.0011)</b>	<b>0.0056</b>	O	
	<b>ND(0.0012)</b>	<b>0.0040</b>	L	

T-14	2019/2/28 7:58	ND(0.0014)	0.0034	O
		ND(0.0013)	0.0033	L
	2019/3/9 8:13	ND(0.0013)	0.0039	O
		ND(0.0014)	0.0054	L
	2019/3/13 7:36	ND(0.0014)	0.0052	O
		ND(0.0014)	0.0081	L
	2019/3/20 7:45	ND(0.0013)	0.0050	O
		ND(0.0014)	0.0049	L
	2019/3/25 6:40	ND(0.0013)	0.0040	O
		ND(0.0013)	0.0048	L
	2019/4/1 7:42	ND(0.0014)	0.0053	O
		ND(0.0012)	0.0056	L
	2019/4/8 7:59	ND(0.0013)	0.0033	O
		ND(0.0012)	0.0035	L
	2019/4/17 7:33	ND(0.0014)	0.0049	O
		ND(0.0013)	0.0042	L
	2019/4/22 7:27	ND(0.0013)	0.0031	O
		ND(0.0014)	0.0052	L
	2019/4/29 7:26	ND(0.0010)	0.0040	O
		0.0013	0.0064	L
2019/5/8 7:25	ND(0.0015)	0.0039	O	
	ND(0.0015)	0.0044	L	
2019/5/13 7:26	ND(0.0011)	0.0035	O	
	ND(0.0011)	0.0031	L	
2019/5/24 7:21	ND(0.0012)	0.0086	O	
	ND(0.0011)	0.0055	L	
2019/5/28 7:33	ND(0.0013)	0.0041	O	
	ND(0.0012)	0.0044	L	
2019/6/3 7:37	ND(0.0012)	0.0045	O	
	ND(0.0011)	0.0018	L	
2019/6/14 7:26	<b>ND(0.0011)</b>	<b>0.0056</b>	O	
	<b>ND(0.0010)</b>	<b>0.0053</b>	L	

O: 上層(表層~2m) Outer Layer  
L: 下層(海底より2~3m上) Lower Layer

福島第一原子力発電所沿岸海域の海水採取ポイント  
 (Seawater sampling points near and around Fukushima Dai-ichi NPP)



\* 図中の×は東京電力ホールディングス(株)福島第一原子力発電所を示す。

\* The legends × indicate the locations of TEPCO Fukushima Dai-ichi NPP, respectively.