

Results of the Ninth Airborne Monitoring and Airborne Monitoring out of the 80km Zone of Fukushima Dai-ichi NPP

13 February, 2015
Nuclear Regulation Authority, Japan

1. Objective

Monitoring of air dose rates has been conducted by the Nuclear Regulation Authority (NRA) based on “Comprehensive Radiation Monitoring Plan (<http://radioactivity.nsr.go.jp/en/contents/8000/7758/view.html>)” by means of helicopter continuously after the accident at Fukushima Daiichi Nuclear Power Station for the purpose of figuring out the distribution of air dose rates.

2. Method

(a) Area to be monitored

The area to be monitored is Fukushima Prefecture, Miyagi Prefecture, the southern part of Iwate Prefecture, the eastern part of Yamagata Prefecture, Ibaraki Prefecture, Gunma Prefecture, Tochigi Prefecture, the northern part of Chiba Prefecture and the eastern part of Saitama Prefecture.

(b) Time to be monitored

The monitoring of air dose rates started on 6 April 2011 and has been conducted continuously. The latest monitoring was conducted in the period from 1 September to 7 November 2014.

(c) Measurement

- Gamma ray was detected every one second in a row, using NaI scintillators installed in helicopters which fly approximately 300 m above the ground surface.
- The detected values were converted into air dose rates at 1 m high from the ground surface.

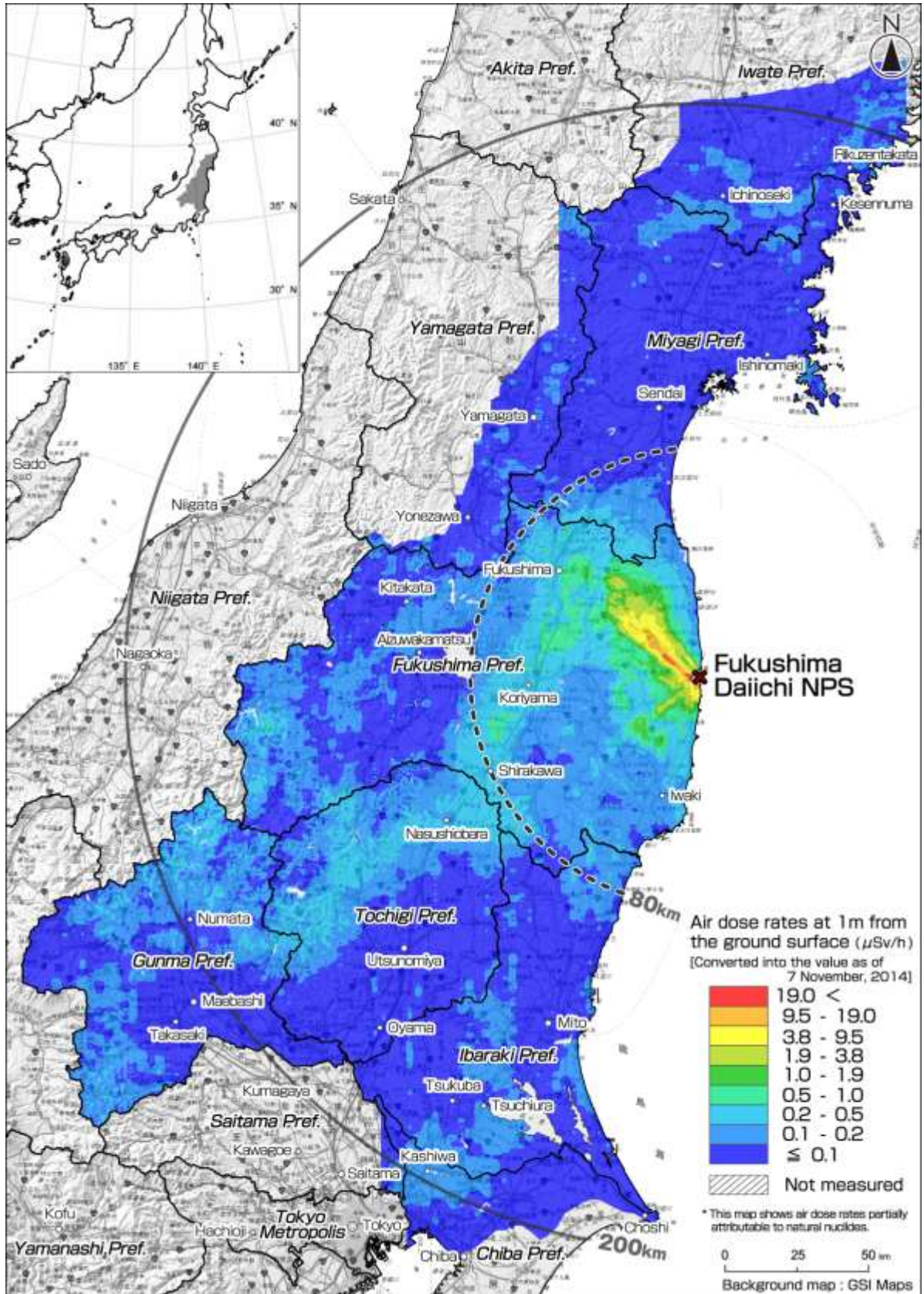
3. Results

- Attachment 1 shows the distribution map of air dose rates at 1m high from the ground surface in Fukushima Prefecture and neighboring Prefectures on 7 November, 2014 (44 months later). In preparing this map, the results obtained from the survey were adjusted for decay as of 7 November, 2014, the last day of the survey.
- Attachment 2 shows the distribution map of air dose rates at 1m high from the ground surface in the 80km zone from the Fukushima Daiichi NPS on 20 September, 2014 (42 months later). In preparing this map, the results obtained from the survey were adjusted for decay as of 20 September, 2014, the last day of the survey.

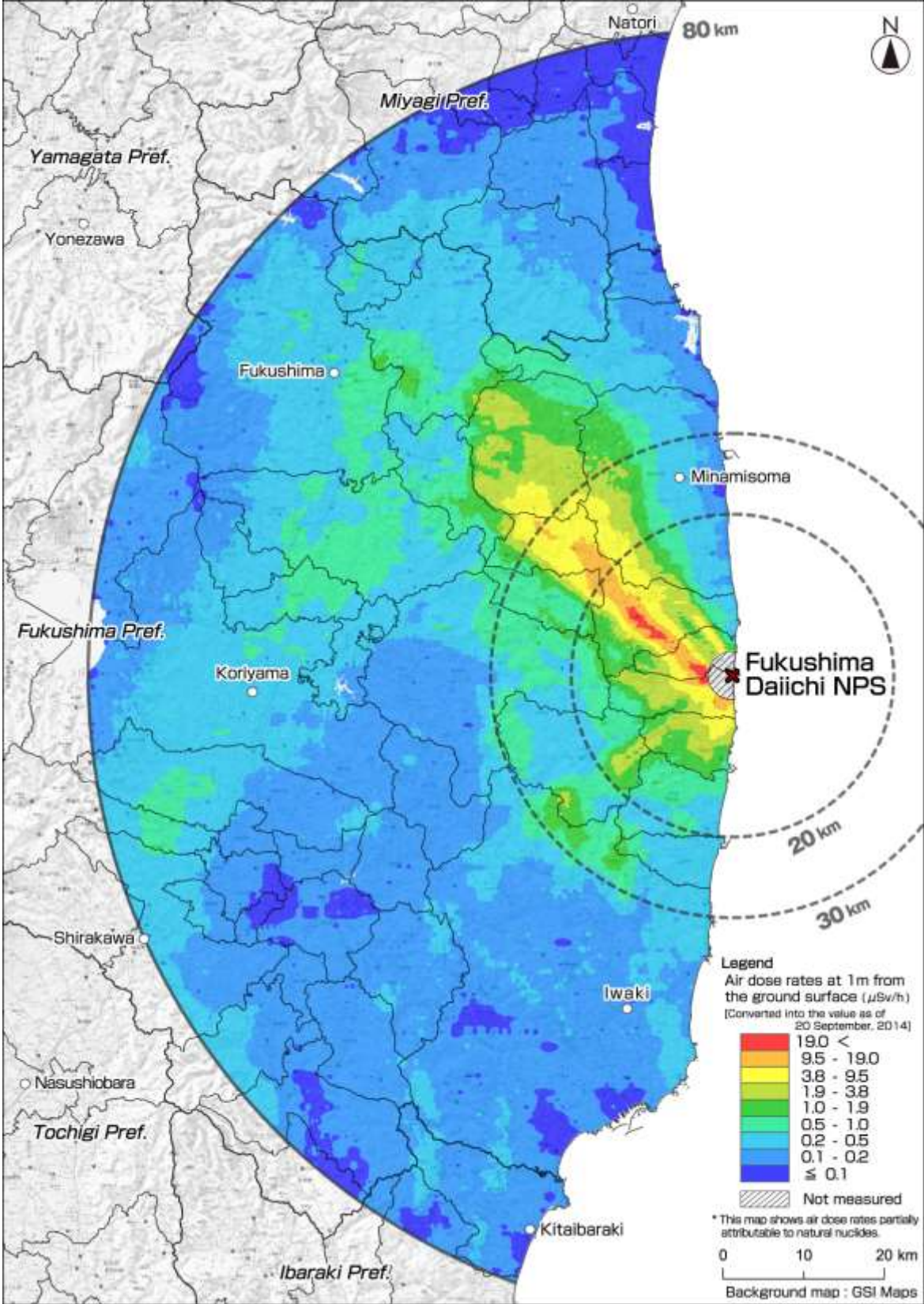
(References)

- Attachment 3 shows the changes in the distribution map of air dose rates at 1m high from the ground surface in the 80km zone from the Fukushima Daiichi NPS.
- The related information is provided in the following site.
<http://ramap.jmc.or.jp/map/eng/> Extension Site of the Distribution Map for Radiation Dose

**Air dose rate map in Fukushima Prefecture and neighboring Prefectures
- 44 months later (as of 7 November, 2014)**



**Air dose rate map in the 80km zone from the Fukushima Daiichi NPS
- 42 months later (as of 20 September, 2014)**



The changes in air dose rates in the maps of the 80km zone from the Fukushima Daiichi NPS.

