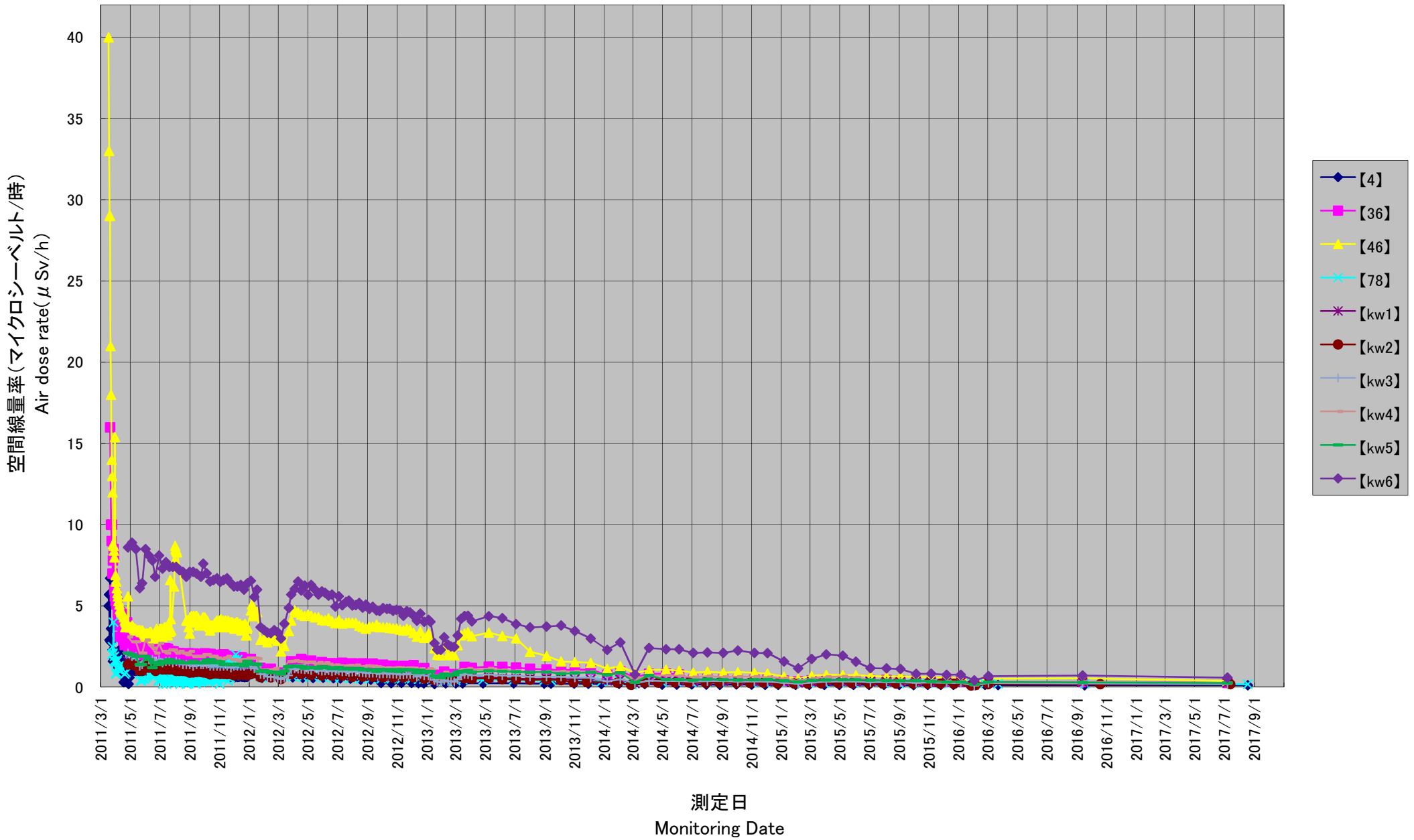


福島第一原子力発電所の20km以遠のモニタリング結果の推移 (1/2)
(Readings at Reading Points out of 20 km Zone of Fukushima Dai-ichi NPP)

川俣町(H23/3/17~H29/10/31)
Kawamata town (measured on Mar 17, 2011 – Oct 31, 2017)



福島第一原子力発電所の20km以遠のモニタリング結果の推移 (2/2)
(Readings at Reading Points out of 20 km Zone of Fukushima Dai-ichi NPP)

川俣町(H27/4/1~H29/10/31)
Kawamata town (measured on Apr 1, 2015 - Oct 31, 2017)

