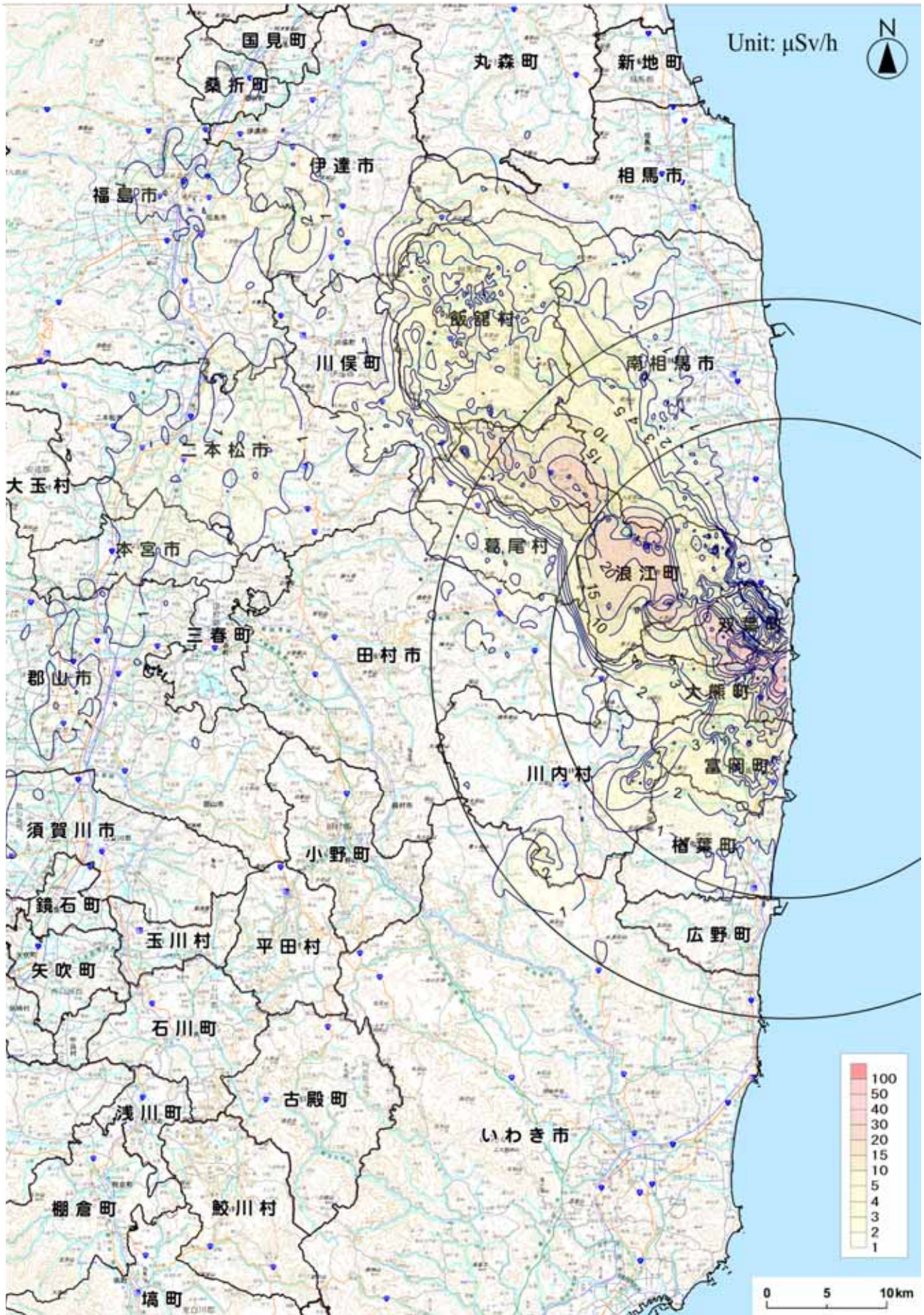
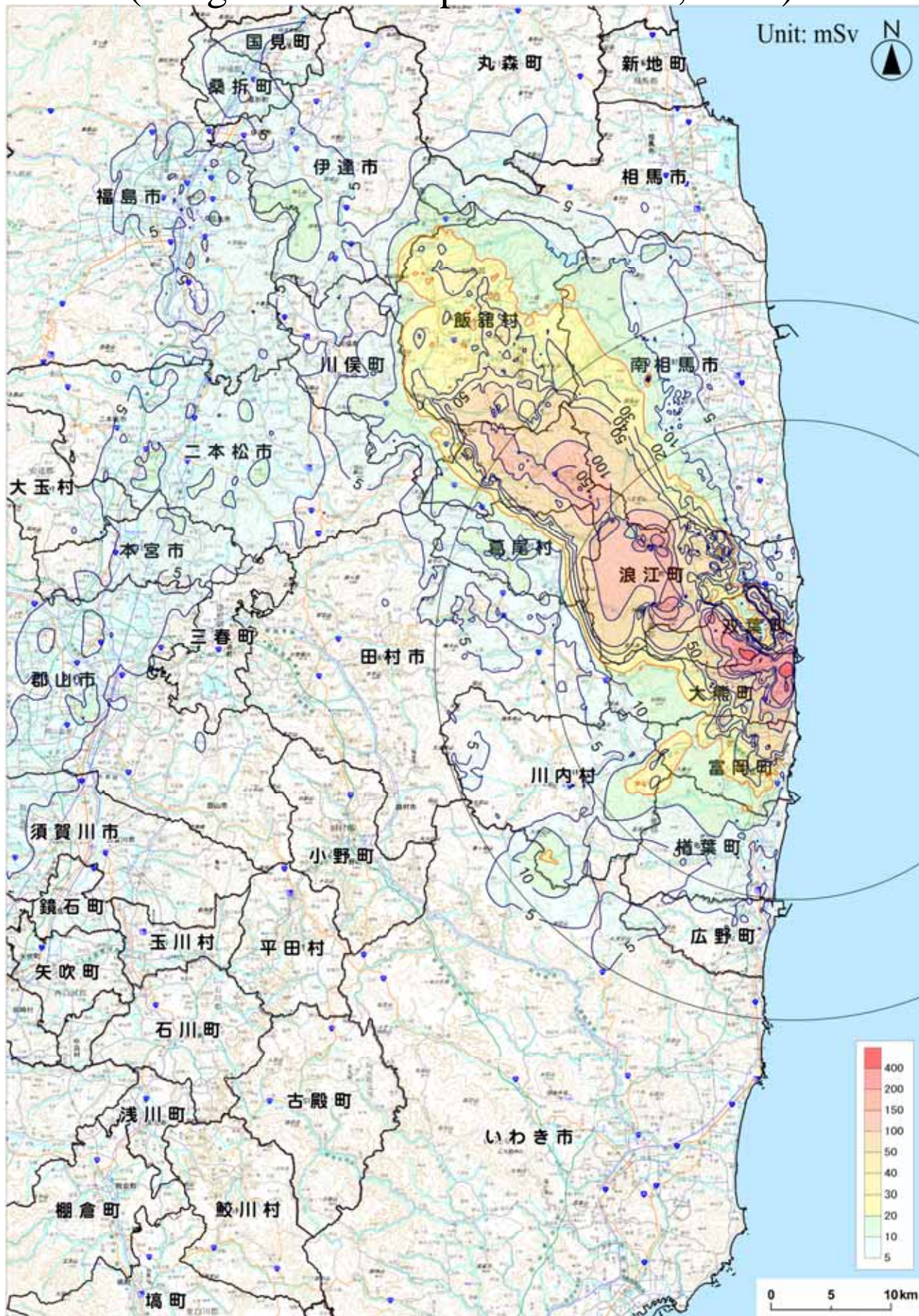


Dose Rate Map (As of January 11, 2012)



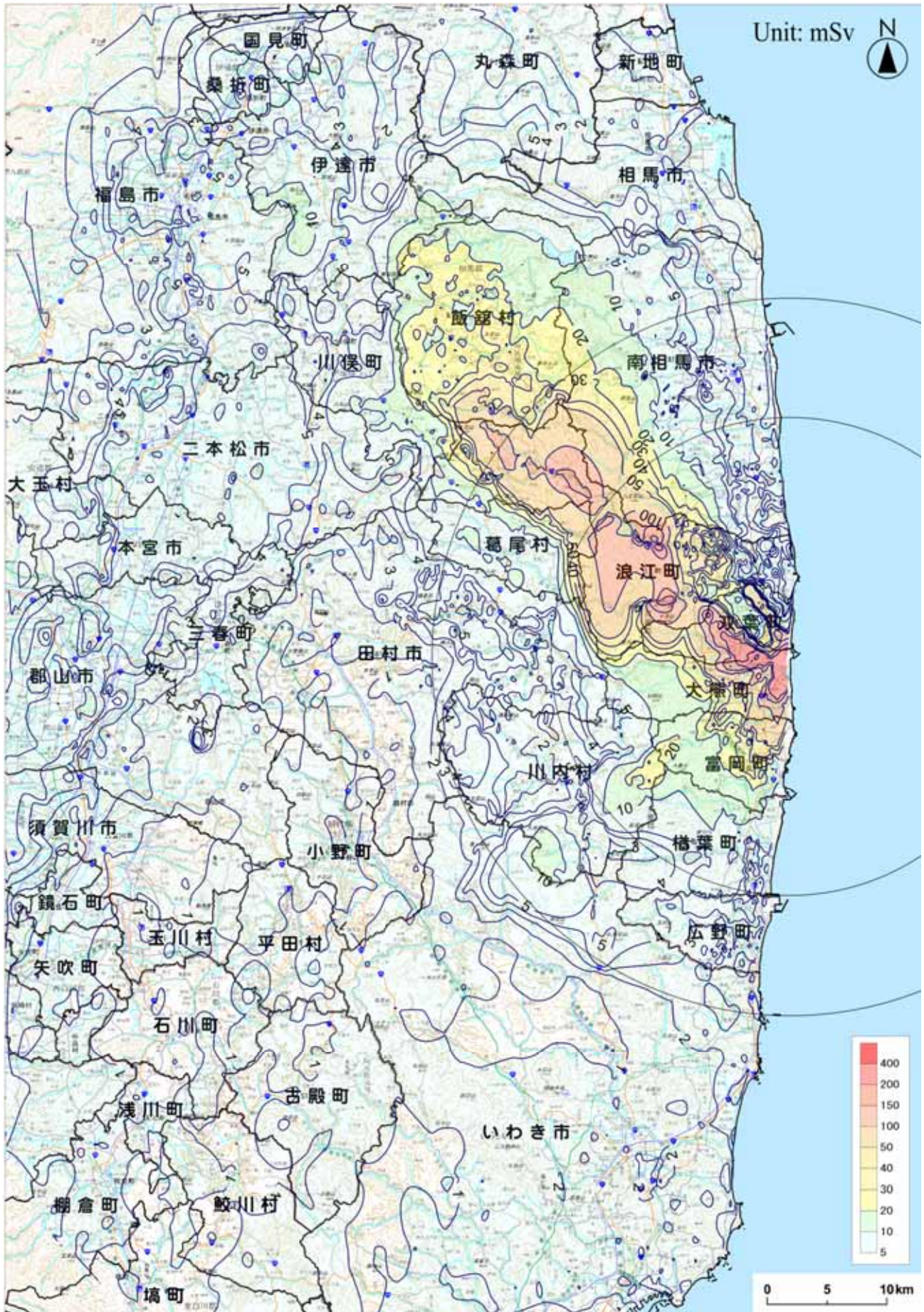
Integrated Dose Estimation Map (Integrated Dose up to March 11, 2012)



Using monitoring results up to 24:00 on January 11, 2012

Background image: Denshi Kokudo

Integrated Dose Estimation Map (Integrated Dose up to January 11, 2012)



Using monitoring results up to 24:00 on January 11, 2012

Background image: Denshi Kokudo

Estimated Integrated Dose at Each Monitoring Location based on Measured Values

Location Number	Location (Monitoring Area) [*1]	From TEPCO Fukushima Dai-ichi NPP		Monitoring start date	Estimates of Integrated Dose [*2][*3][*4]	Latest Readings (Average) [*5]	Estimates of Integrated Dose as of March 11, 2012 (mSv) [*6]
		Direction	Distance		(mSv)	(mSv/h)	
(1) Planned evacuation zones							
33	Soma county Iitate village Nagadoro	North/West	33 km	March 16	41.5	0.0062	46.8
62	Soma county Iitate village Kusano Taishido	North/West	39 km	March 17	22.5	0.0036	25.7
61	Soma county Iitate village Yagisawa	North/West	36 km	March 17	17.6	0.0030	20.2
63	Soma county Iitate village Nimaibashi	North/West	44 km	March 17	6.5	0.0010	7.4
i27	Soma county Iitate village Nagadoro	North/West	33 km	April 26	80.1	0.0148	92.9
i28	Soma county Iitate village Hiso	North/West	34 km	April 26	73.1	0.0098	81.5
i26	Soma county Iitate village Nagadoro	North/West	31 km	April 26	52.1	0.0082	59.2
i24	Soma county Iitate village Komiya Kariyaniwa	North/West	32 km	April 26	43.3	0.0065	48.9
i4	Soma county Iitate village Fukaya	North/West	41 km	April 25	41.9	0.0065	47.5
i25	Soma county Iitate village Warabidaira	North/West	29 km	April 26	40.6	0.0059	45.7
i22	Soma county Iitate village Komiya	North/West	35 km	April 26	35.4	0.0056	40.3
i13	Soma county Iitate village Maeta	North/West	43 km	April 25	31.5	0.0044	35.3
i19	Soma county Iitate village Sekisawa	North/West	38 km	April 26	31.0	0.0049	35.2
i20	Soma county Iitate village Sekisawa Hashiba	North/West	36 km	April 26	30.1	0.0050	34.4
i29	Soma county Iitate village Hiso	North/West	38 km	April 26	29.6	0.0042	33.2
i23	Soma county Iitate village Komiya	North/West	36 km	April 26	28.8	0.0043	32.5
i21	Soma county Iitate village Komiya Nodegami	North/West	33 km	April 26	27.8	0.0045	31.7
i6	Soma county Iitate village Fukaya	North/West	41 km	April 25	27.9	0.0034	30.9
i9	Soma county Iitate village Maeta	North/West	45 km	April 25	25.3	0.0039	28.7
i31	Soma county Iitate village Itoi aza Machi	North/West	38 km	April 26	24.2	0.0037	27.4
i10	Soma county Iitate village Sasu	North/West	46 km	April 25	24.1	0.0036	27.2
i14	Soma county Iitate village Kusano	North/West	40 km	April 25	24.2	0.0032	26.9
i7	Soma county Iitate village Usuishi	North/West	42 km	April 25	22.7	0.0033	25.5
i2	Soma county Iitate village Itamizawa	North/West	39 km	April 25	22.1	0.0034	25.1
i5	Soma county Iitate village Fukaya	North/West	40 km	April 25	21.2	0.0031	23.9
i32	Soma county Iitate village Itoi	North/West	37 km	April 26	20.9	0.0033	23.8
i3	Soma county Iitate village Kusano	North/West	39 km	April 25	20.9	0.0026	23.2
i11	Soma county Iitate village Sasu	North/West	46 km	April 25	20.2	0.0030	22.9
i18	Soma county Iitate village Yagisawa	North/West	36 km	April 25	19.4	0.0033	22.2
i1	Soma county Iitate village Itamizawa	North/West	39 km	April 25	19.6	0.0026	21.8
i30	Soma county Iitate village Itoi Ohi	North/West	40 km	April 26	19.0	0.0026	21.2
i17	Soma county Iitate village Kusano	North/West	38 km	April 25	17.4	0.0026	19.6
i15	Soma county Iitate village Ookura	North/North/West	40 km	April 25	14.0	0.0020	15.7
i12	Soma county Iitate village Sasu	North/West	43 km	April 25	13.3	0.0019	14.9
i8	Soma county Iitate village Nimaibashi	North/West	44 km	April 25	12.8	0.0020	14.6
i16	Soma county Iitate village Ookura	North/North/West	40 km	April 25	11.7	0.0019	13.4
46	Date county Kawamata town Yamakiya Mukaideyama	West/North/West	34 km	March 17	20.7	0.0045	24.6
36	Date county Kawamata town Yamakiya Oonukari	West/North/West	38 km	March 20	12.0	0.0017	13.5

Estimated Integrated Dose at Each Monitoring Location based on Measured Values

Location Number	Location (Monitoring Area) [*1]	From TEPCO Fukushima Dai-ichi NPP		Monitoring start date	Estimates of Integrated Dose [*2][*3][*4]	Latest Readings (Average) [*5]	Estimates of Integrated Dose as of March 11, 2012 (mSv) [*6]
		Direction	Distance		(mSv)	(mSv/h)	
kw6	Date county Kawamata town Yamakiya Hirokuboyama	West/North/West	33 km	April 26	39.2	0.0056	44.0
kw4	Date county Kawamata town Yamakiya Boyoshi	West/North/West	37 km	April 26	12.4	0.0018	14.0
kw5	Date county Kawamata town Yamakiya Ishotatsuyama	West/North/West	34 km	April 26	9.0	0.0014	10.2
kw3	Date county Kawamata town Yamakiya Shimonagahashi	West/North/West	40 km	April 26	8.6	0.0012	9.6
21	Futaba county Katsurao village Kaminogawa	West/North/West	31 km	March 17	11.8	0.0021	13.6
104	Futaba county Katsurao village oaza Ochiai aza Ochiai	West/North/West	25 km	April 7	6.9	0.0008	7.5
K8	Futaba county Katsurao village Katsurao Noyuki	West/North/West	21 km	April 25	89.4	0.0144	101.8
K7	Futaba county Katsurao village Katsurao Kashiwabara	West/North/West	23 km	April 25	51.5	0.0088	59.1
K6	Futaba county Katsurao village Katsurao Hiroyaji	West/North/West	26 km	April 25	44.8	0.0072	51.0
K9	Futaba county Katsurao village Ochiai Ozasa	West/North/West	21 km	April 25	14.3	0.0021	16.1
K4	Futaba county Katsurao village Nogawa Nakanouchi	West/North/West	28 km	April 25	11.4	0.0016	12.7
K11	Futaba county Katsurao village Ochiai Ohanachi	West/North/West	21 km	April 25	9.9	0.0016	11.3
K1	Futaba county Katsurao village Katsurao Kazakoshi	West/North/West	32 km	April 25	9.1	0.0012	10.2
K2	Futaba county Katsurao village Katsurao Nakadaira	West/North/West	30 km	April 25	8.9	0.0013	10.0
K3	Futaba county Katsurao village Katsurao Higashidaira	West/North/West	28 km	April 25	8.3	0.0014	9.5
K10	Futaba county Katsurao village Ochiai Ozasa	West/North/West	24 km	April 25	7.4	0.0013	8.4
K5	Futaba county Katsurao village Nogawa Yuden	West/North/West	29 km	April 25	7.1	0.0010	8.0
83	Futaba county Namie town Akougi Kunugidaira	North/West	24 km	March 24	178.4	0.0294	203.7
81	Futaba county Namie town Akougi Ishikoya	North/West	30 km	March 24	103.3	0.0165	117.5
32	Futaba county Namie town Akougi Teshichiro	North/West	31 km	March 16	77.5	0.0127	88.5
79	Futaba county Namie town Shimotsushima Kayabuka	West/North/West	29 km	March 16	36.2	0.0061	41.5
31	Futaba county Namie town Tsushima Nakaoki	West/North/West	30 km	March 17	33.3	0.0055	38.1
34	Futaba county Namie town Tsushima Taikougi	West/North/West	30 km	March 19	16.4	0.0027	18.7
n5	Futaba county Namie town Hirusone Kurabeishi	North/West	22 km	April 27	190.8	0.0313	217.9
n11	Futaba county Namie town Hirusone	North/West	20 km	May 2	121.8	0.0171	136.6
n2	Futaba county Namie town Akougi Kutsukubo	North/West	28 km	April 27	103.0	0.0165	117.3
n1	Futaba county Namie town Akougi Teshichiro	North/West	31 km	April 27	102.9	0.0150	115.9
n7	Futaba county Namie town Akougi Shiobite	North/West	26 km	April 27	98.7	0.0153	111.9
n4	Futaba county Namie town Minamitsushima Shimohiyada	North/West	23 km	April 27	97.0	0.0163	111.0
n6	Futaba county Namie town Minamitsushima Shimohiyada	North/West	25 km	April 27	83.3	0.0138	95.3
n8	Futaba county Namie town Shimotsushima Kotsuka	West/North/West	27 km	April 27	68.8	0.0111	78.4
n3	Futaba county Namie town Akougi Shiraoi	North/West	28 km	April 27	60.8	0.0095	69.1
n9	Futaba county Namie town Shimotsushima aza Kayabuka	West/North/West	29 km	April 27	45.6	0.0072	51.9
n10	Futaba county Namie town Hatsuke Tatenosawa	West/North/West	33 km	April 27	9.9	0.0016	11.2
ms6	Minamisoma city Haramachi ward Baba aza Godaisan	North/West	21 km	April 26	56.2	0.0084	63.5
ms4	Minamisoma city Haramachi ward Takanokura aza Mori	North/North/West	27 km	April 26	23.0	0.0036	26.1

Estimated Integrated Dose at Each Monitoring Location based on Measured Values

Location Number	Location (Monitoring Area) [*1]	From TEPCO Fukushima Dai-ichi NPP		Monitoring start date	Estimates of Integrated Dose [*2][*3][*4]	Latest Readings (Average) [*5]	Estimates of Integrated Dose as of March 11, 2012 (mSv) [*6]
		Direction	Distance		(mSv)	(mSv/h)	
(2) Other zones							
115	Iwaki city Kawamae town Shimookeuri Ogi	South/West	28 km	May 30	14.5	0.0019	16.1
114	Iwaki city Ogawa town Kamiogawa	South/West	26 km	March 20	5.6	0.0010	6.4
73	Iwaki city Yotsukura town	South	35 km	March 20	2.2	0.0004	2.6
72	Iwaki city Hisanohama town Hisanohama aza Kitaaramaki	South	31 km	March 20	2.0	0.0003	2.3
44	Iwaki city Ohisa town Ohisa Yanomezawa	South/South/West	28 km	March 17	2.1	0.0002	2.2
38	Iwaki city Yotsukura town Shiraiwa Hokita	South/South/West	34 km	March 31	1.9	0.0003	2.1
106	Iwaki city Kawamae town Ojiroi aza Syokangoya	West/South/West	32 km	April 7	1.3	0.0002	1.5
74	Iwaki city Ogawa town Takahagi	South/South/West	36 km	March 20	1.2	0.0002	1.3
84	Iwaki city Miwa-town Saiso	South/West	39 km	March 26	0.9	0.0002	1.1
75	Iwaki city Uchigoumiyamaya town	South/South/West	43 km	March 20	0.8	0.0002	1.0
174	Iwaki city Ogawa town Takahagi	South/South/West	36 km	May 23	0.4	0.0002	0.6
86	Koriyama city Ootsuki town Choemonbayashi	West	63 km	March 27	4.0	0.0007	4.6
ko3	Koriyama city Toyota town	West	59 km	April 3	8.4	0.0015	9.7
ko1	Koriyama city Tsurumidan	West	59 km	April 25	6.8	0.0010	7.6
ko2	Koriyama city Saikon	West	59 km	April 25	6.2	0.0010	7.0
39	Soma city Yamakami Kaminamiki	North/North/West	41 km	April 1	2.5	0.0004	2.9
5	Soma city Nakanoteramae	North/North/West	42 km	March 17	2.0	0.0003	2.2
4	Date county Kawamata town oaza Tsurusawa aza Kawabata	North/West	47 km	March 17	4.2	0.0007	4.8
78	Date county Kawamata town Tsurusawa	North/West	48 km	March 20	3.9	0.0008	4.5
kw1	Date county Kawamata town Kotsunagi Ushirozawa	North/West	42 km	April 26	6.3	0.0009	7.1
kw2	Date county Kawamata town Kotsunagi Kamihagane	North/West	42 km	April 26	5.7	0.0008	6.4
37	Date city Ryozen town Ishida Hojizawa	North/West	48 km	March 31	16.0	0.0027	18.3
3	Date city Ryozen town Ishida Hikohei	North/West	46 km	March 17	10.2	0.0017	11.7
102	Date city Tsukidate town	North/West	51 km	April 7	5.0	0.0008	5.7
101	Date city Ryozen town Oishi aza Minowa	North/West	55 km	April 7	2.8	0.0002	3.0
d4	Date city Ryozen town Kamioguni Chabatake	North/West	55 km	April 27	15.9	0.0024	18.0
d2	Date city Ryozen town Shimooguni Takayashiki	North/West	55 km	April 27	14.3	0.0023	16.2
d5	Date city Ryozen town Ishida Hojizawa	North/West	48 km	April 27	12.2	0.0019	13.8
d3	Date city Ryozen town Kamioguni Matsusaka	North/West	55 km	April 27	12.0	0.0019	13.6
d14	Date city Ryozen town Kamioguni Chabatake	North/West	55 km	September 15	9.8	0.0013	10.9
177	Futaba county Kawauchi village Shimokawauchi	South/West	25 km	May 23	4.9	0.0008	5.5
87	Futaba county Kawauchi village Kamikawauchi Hananouchi	West/South/West	29 km	March 27	3.3	0.0006	3.9
111	Futaba county Kawauchi village Kamikawauchi	West/South/West	28 km	May 18	3.1	0.0004	3.4
181	Futaba county Kawauchi village Kamikawauchi	West/South/West	25 km	May 20	2.6	0.0004	2.9
43	Futaba county Kawauchi village Shimokawauchi Miyawata	West/South/West	22 km	March 16	1.9	0.0003	2.2
76	Futaba county Kawauchi village Kamikawauchi Hayawata	West/South/West	22 km	March 20	1.7	0.0001	1.8
45	Futaba county Naraha town Yamadaoka Utsukushimori	South	20 km	March 17	3.1	0.0004	3.4

Estimated Integrated Dose at Each Monitoring Location based on Measured Values

Location Number	Location (Monitoring Area) [*1]	From TEPCO Fukushima Dai-ichi NPP		Monitoring start date	Estimates of Integrated Dose [*2][*3][*4]	Latest Readings (Average) [*5]	Estimates of Integrated Dose as of March 11, 2012 (mSv) [*6]
		Direction	Distance		(mSv)	(mSv/h)	
112	Futaba county Hirono town Kamiyamigawa	South/South/West	24 km	May 18	3.1	0.0005	3.5
71	Futaba county Hirono town Shimokitaba Nawashirogae	South	23 km	March 20	2.4	0.0003	2.6
51	Tamura county Ono town Ononiimachi Tatemawari	West/South/West	39 km	March 17	0.8	0.0001	0.9
113	Tamura city Miyakoji town Furumichi Iwaisawa	West	25 km	May 20	6.4	0.0009	7.2
110	Tamura city Miyakoji town Furumichi	West	25 km	May 18	5.0	0.0006	5.5
42	Tamura city Tokiwa town Yamane Tomioka	West	33 km	March 17	3.5	0.0007	4.1
15	Tamura city Tokiwa town Yamane Kashima	West	32 km	March 17	3.0	0.0004	3.4
41	Tamura city Miyakoji town Furumichi	West	21 km	March 17	2.7	0.0005	3.1
23	Tamura city Funehiki town Minamiutsushi Suicyuuchi	West/North/West	37 km	March 17	2.6	0.0004	3.0
20	Tamura city Funehiki town Niitate shimo	West	41 km	March 17	2.2	0.0004	2.5
105	Tamura city Miyakoji town Furumichi aza Teranomae	West	21 km	April 7	1.6	0.0003	1.8
22	Tamura city Funehiki town Kamiutsushi aza Ushirota	West/North/West	35 km	March 17	1.6	0.0002	1.8
12	Tamura city Funehiki town Funehiki aza Ozawakawashiro	West	39 km	March 17	1.3	0.0002	1.5
13	Tamura city Tokiwa town Nishimuki Yakata	West	37 km	March 17	1.3	0.0002	1.4
14	Tamura city Tokiwa town Tokiwa Uchimachi	West	34 km	March 17	1.2	0.0002	1.4
52	Tamura city Funehiki town funehiki Babakawara	West	41 km	March 17	1.0	0.0002	1.2
11	Nihonmatsu city Ota aza Shimoda	West/North/West	43 km	March 17	4.6	0.0006	5.1
35	Nihonmatsu city Tazawahagidaira	West/North/West	37 km	March 19	3.9	0.0008	4.6
10	Nihonmatsu city Harimichi Nakajima	West/North/West	44 km	March 17	3.1	0.0005	3.5
ni1	Nihonmatsu city Kamikawasaki Itouchi	West/North/West	51 km	April 25	5.9	0.0009	6.6
ni2	Nihonmatsu city Tazawa Shimomagariyama	West/North/West	36 km	April 26	4.2	0.0006	4.8
2	Fukushima city Onami Takinoiri	North/West	56 km	March 17	8.2	0.0010	9.0
88	Fukushima city Higarigaoka	West/North/West	58 km	April 3	4.5	0.0003	4.8
1	Fukushima city Sugitsuma town	North/West	62 km	March 16	3.4	0.0005	3.8
85	Fukushima city Arai Harajiku	West/North/West	66 km	March 27	1.9	0.0005	2.3
d11	Fukushima city Higashihama town	North/West	61 km	April 27	8.8	0.0016	10.1
d13	Fukushima city Nankodai	North/West	59 km	April 27	8.4	0.0012	9.4
d6	Fukushima city Koganeyama	North/West	62 km	April 27	7.5	0.0012	8.5
d1	Fukushima city Minamiyanome Michishita	North/West	66 km	April 27	7.3	0.0010	8.1
d8	Fukushima city Miyashita town	North/West	63 km	April 27	5.9	0.0011	6.8
d12	Fukushima city Watari	North/West	61 km	April 27	5.3	0.0005	5.7
d7	Fukushima city Sankyoue	North/West	63 km	April 27	4.3	0.0005	4.8
d10	Fukushima city Kamihama town	North/West	61 km	April 27	4.3	0.0005	4.7
d9	Fukushima city Shinhama town	North/West	62 km	April 27	3.4	0.0004	3.7
108	Minamisoma city Haramachi ward Ohara Daihata	North/North/West	29 km	April 7	11.6	0.0014	12.8
107	Minamisoma city Haramachi ward Baba Shimonakanouchi	North/North/West	23 km	April 7	7.7	0.0007	8.3
6	Minamisoma city Kashima ward Nishimachi	North	32 km	March 17	3.7	0.0007	4.3
7	Minamisoma city Kashima ward Terauchi Motoyashiki	North	32 km	March 17	2.8	0.0005	3.2
103	Minamisoma city Haramachi ward Taka Mamegarauchi	North	21 km	April 7	2.1	0.0003	2.4
80	Minamisoma city Haramachi ward Takami town	North	24 km	March 20	1.7	0.0003	2.0

Estimated Integrated Dose at Each Monitoring Location based on Measured Values

Location Number	Location (Monitoring Area) [*1]	From TEPCO Fukushima Dai-ichi NPP		Monitoring start date	Estimates of Integrated Dose [*2][*3][*4]	Latest Readings (Average) [*5]	Estimates of Integrated Dose as of March 11, 2012 (mSv) [*6]
		Direction	Distance		(mSv)	(mSv/h)	
ms1	Minamisoma city Haramachi ward Ohara aza Hebiishi	North/North/West	33 km	April 26	18.0	0.0031	20.7
ms5	Minamisoma city Haramachi ward Takakura aza Domae	North/North/West	26 km	April 26	14.1	0.0023	16.1
ms11	Minamisoma city Haramachi ward Ohara aza Daihata	North/North/West	29 km	April 26	10.4	0.0013	11.5
ms2	Minamisoma city Kashima ward Jisabara aza Kamahai	North/North/West	32 km	April 26	8.5	0.0011	9.5
ms3	Minamisoma city Kashima ward Kamitochikubo aza Kanodai	North/North/West	37 km	April 26	6.0	0.0009	6.7
ms7	Minamisoma city Haramachi ward Baba aza Nakouchi	North/North/West	23 km	April 26	5.3	0.0005	5.7
ms9	Minamisoma city Haramachi ward Takami town	North	24 km	April 26	1.8	0.0003	2.0
ms10	Minamisoma city Haramachi ward taka aza Mamegarauchi	North	21 km	April 26	1.4	0.0003	1.7
ms8	Minamisoma city Haramachi ward Kanezawa aza Oiai	North	28 km	April 26	1.3	0.0003	1.6
mo1	Motomiya city Wada	West/North/West	52 km	April 25	10.2	0.0015	11.4
(3) The emergency evacuation preparation areas							
31	Tamura city Miyakoji town Furumichi	West/South/West	18 km	May 6	6.3	0.0010	7.2
24	Tamura city Miyakoji town Furumichi	West	17 km	May 6	5.5	0.0009	6.3
37	Futaba county Okuma town Koirino	West/South/West	3.0 km	May 6	427.2	0.0677	485.6
29	Futaba county Okuma town oaza Ottozawa	West	2.4 km	May 6	331.8	0.0508	375.7
47	Futaba county Okuma town oaza Kumagawa	South/South/West	3.7 km	May 6	193.6	0.0294	219.0
36	Futaba county Okuma town Shimonogami	West/South/West	4.8 km	May 6	163.4	0.0092	171.4
30	Futaba county Okuma town oaza Ottozawa	West	2.6 km	May 6	144.5	0.0240	165.3
23	Futaba county Okuma town oaza Ottozawa	West/North/West	2.3 km	May 6	121.6	0.0177	136.9
50	Futaba county Okuma town oaza Kumagawa	South	4.0 km	May 6	107.6	0.0183	123.4
35	Futaba county Okuma town oaza Nogami	West/South/West	6.6 km	May 6	81.5	0.0122	92.1
38	Futaba county Okuma town Koirino	West/South/West	3.4 km	May 6	66.5	0.0080	73.4
26	Futaba county Okuma town oaza Nogami	West	11 km	May 6	19.9	0.0031	22.6
34	Futaba county Okuma town Ogawara	West/South/West	7.5 km	May 6	19.7	0.0031	22.4
25	Futaba county Okuma town oaza Nogami	West	14 km	May 6	17.3	0.0030	19.9
32	Futaba county Kawauchi village Shimokawauchi	West/South/West	20 km	May 6	9.4	0.0014	10.6
33	Futaba county Kawauchi village Shimokawauchi	West/South/West	15 km	May 6	6.5	0.0012	7.5
46	Futaba county Tomioka town oaza Oragahama	South/South/West	5.6 km	May 6	97.6	0.0137	109.4
45	Futaba county Tomioka town oaza Motooka	South/South/West	7.1 km	May 6	64.8	0.0102	73.6
42	Futaba county Tomioka town oaza Kamiteoka	South/West	7.9 km	May 6	42.3	0.0069	48.3
39	Futaba county Tomioka town oaza Kamiteoka	South/West	13 km	May 6	31.5	0.0047	35.5
49	Futaba county Tomioka town oaza Kobama	South	9.4 km	May 6	23.9	0.0043	27.6
54	Futaba county Tomioka town oaza Kamiteoka	South/West	11 km	October 4	19.8	0.0033	22.6
43	Futaba county Tomioka town oaza Kamikoriyama	South/South/West	13 km	May 6	17.6	0.0021	19.5
40	Futaba county Tomioka town oaza Kamiteoka	West/South/West	9.8 km	May 6	11.2	0.0016	12.5

Estimated Integrated Dose at Each Monitoring Location based on Measured Values

Location Number	Location (Monitoring Area) [*1]	From TEPCO Fukushima Dai-ichi NPP		Monitoring start date	Estimates of Integrated Dose [*2][*3][*4]	Latest Readings (Average) [*5]	Estimates of Integrated Dose as of March 11, 2012 (mSv) [*6]
		Direction	Distance		(mSv)	(mSv/h)	
19	Futaba county Namie town Kawabusa	North/West	19 km	May 6	184.8	0.0300	210.7
55	Futaba county Namie town oaza Ide	West/North/West	10 km	October 25	183.2	0.0287	208.0
53	Futaba county Namie town oaza Ide	West/North/West	11 km	October 4	133.2	0.0205	150.8
14	Futaba county Namie town Hirusone	North/West	20 km	May 6	122.3	0.0235	142.6
21	Futaba county Namie town oaza Ide	West/North/West	9.1 km	May 6	124.7	0.0201	142.1
20	Futaba county Namie town oaza Omaru	West/North/West	12 km	May 6	119.9	0.0188	136.2
15	Futaba county Namie town Murohara	North/West	16 km	May 6	111.7	0.0184	127.6
17	Futaba county Namie town oaza Suemori	North/West	11 km	May 6	53.9	0.0090	61.7
9	Futaba county Namie town Sakai	North/North/West	7.3 km	May 6	49.5	0.0078	56.3
13	Futaba county Namie town oaza Tatsuno	North/West	14 km	May 6	38.3	0.0071	44.4
16	Futaba county Namie town oaza Tatsuno	North/North/West	11 km	May 6	30.5	0.0040	34.0
2	Futaba county Namie town oaza Kitakiyohashi	North	8.0 km	May 6	3.4	0.0005	3.8
44	Futaba county Naraha town Kamishigeoka	South/South/West	14 km	May 6	12.6	0.0020	14.3
41	Futaba county Naraha town oaza Ide	South/West	15 km	May 6	10.6	0.0014	11.8
52	Futaba county Naraha town oaza Kamikobana	South/South/West	18 km	September 14	5.0	0.0009	5.8
48	Futaba county Naraha town oaza Ide	South	16 km	May 6	4.2	0.0008	4.9
8	Futaba county Futaba town oaza Nagatsuka	North/North/West	4.8 km	May 6	143.4	0.0230	163.3
27	Futaba county Futaba town Ishikuma	West/North/West	7.3 km	May 6	101.4	0.0175	116.5
28	Futaba county Futaba town oaza Yamada	West	7.1 km	May 6	55.7	0.0098	64.2
10	Futaba county Futaba town oaza Nagatsuka	North/North/West	4.1 km	May 6	53.6	0.0061	58.9
22	Futaba county Futaba town oaza Maeta	West/North/West	3.6 km	May 6	45.8	0.0085	53.1
18	Futaba county Futaba town Terasawa	North/West	7.0 km	May 6	36.0	0.0064	41.6
11	Futaba county Futaba town oaza Shinzan	North/West	3.5 km	May 6	24.4	0.0040	27.9
12	Minamisoma city Odaka ward Kanaya	North/West	18 km	May 6	46.5	0.0072	52.7
51	Minamisoma city Odaka ward Kawabusa	North/West	16 km	September 6	27.0	0.0051	31.4
6	Minamisoma city Odaka ward Otomi	North/North/West	19 km	May 6	10.5	0.0021	12.3
7	Minamisoma city Odaka ward Kamiyama	North/North/West	13 km	May 6	10.4	0.0014	11.5
3	Minamisoma city Odaka ward Katakusa	North/North/West	18 km	May 6	5.6	0.0009	6.4
4	Minamisoma city Odaka ward Izumisawa	North/North/West	14 km	May 6	3.6	0.0006	4.1
1	Minamisoma city Odaka ward Oi	North	16 km	May 6	3.2	0.0006	3.7
5	Minamisoma city Odaka ward Namedu	North/North/West	11 km	May 6	2.9	0.0005	3.4

This table was jointly compiled by the Nuclear Safety Commission, MEXT, and the Nuclear and Industrial Safety Agency.

*1: Information on the latitude and longitude of each monitoring spot is available on the MEXT website.

*2: Shown values are integrated values monitored from 6:00, March 12, 2011 through 24:00, January 11, 2012. The same estimation method as that used by the Nuclear Safety Commission on March 26, 2011 is used, whereby the values are estimated by multiplying the monitored values by 0.6 in consideration of the reduction effect of wooden buildings (0.4) when staying outdoors for eight hours and indoors for 16 hours.

*3: For locations where the monitoring was started on or after March 19, 2011, the dose data for the period from March 17, 2011, to the day before the start of monitoring has been derived by assuming that the dose has changed in proportion to changes at Location No. 32, where the steepest dose change has been observed.

*4: For the period where actual values monitored by a simple integrating dosimeter are available, such values are indicated.

*5: The average of the estimates from January 9, 2012, to January 11. Where no measurement results are available for the period from January 9 to January 11, average values are calculated, presuming that the values on or after the last measurement date are proportional to the air doses measured at point 32. As for locations where actual values have been obtained by a simple integrating dosimeter, this is the average (from December 9 to December 11) of the integrated values monitored since the time of the previous data sampling divided by the time lapsed.

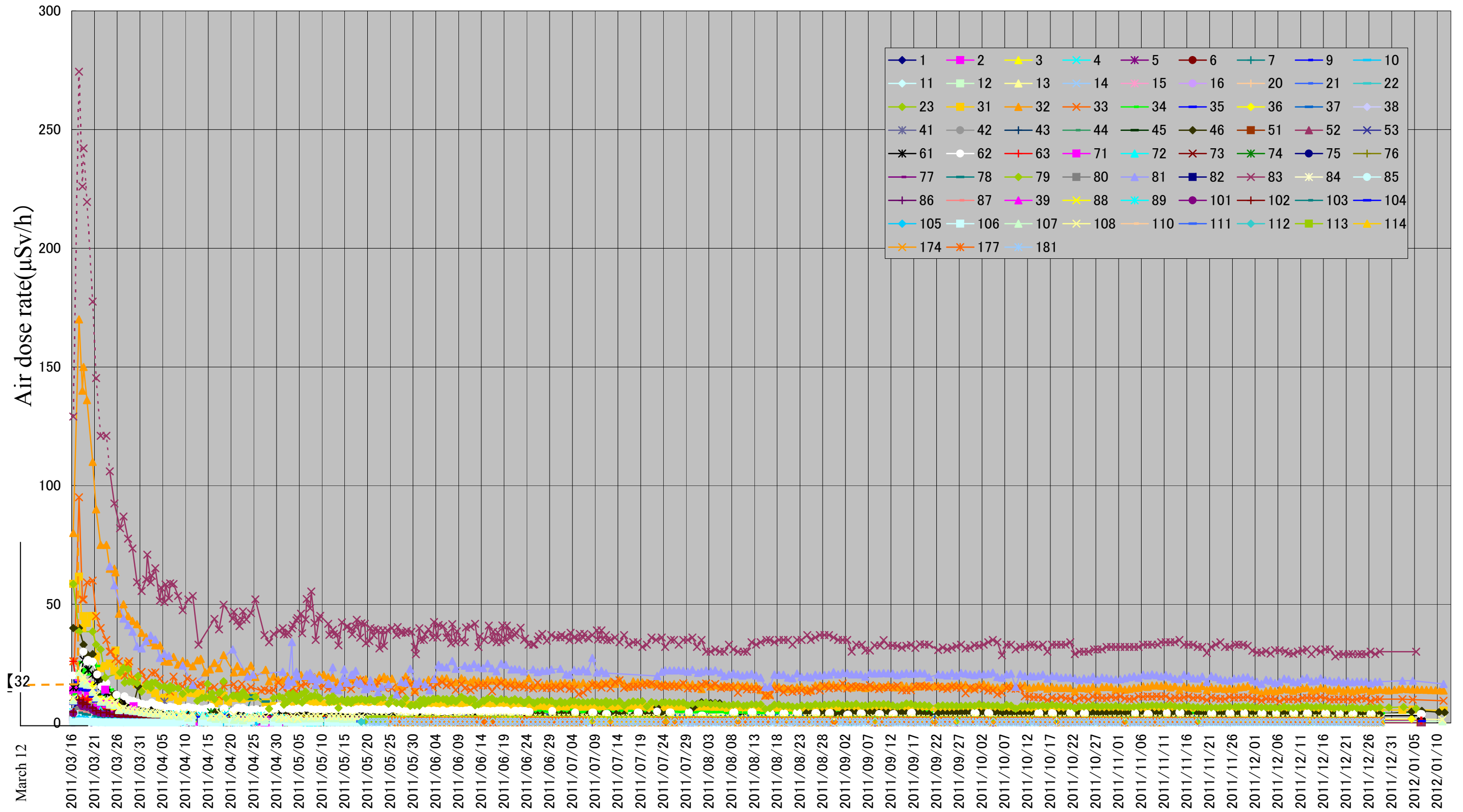
*6: Shown values have been obtained while supposing that the latest monitored values (the average) [*5] will stay unchanged on and after January 12, 2012.

*7: Point 1 in "Other areas" shows values measured on the second floor of the Fukushima prefectural government office (outdoor).

In the isogram map of estimated integrated doses, the values for a total of 8,442 air dose monitoring locations were used (the 216 locations mentioned above plus the 8,226 locations below).

- 1) Air dose rates observed in the emergency environmental monitoring conducted by Fukushima Prefecture from March 30 to November 11: 97 locations
- 2) Air dose rates observed in monitoring conducted by MEXT on April 9 in Katsurao village and Namie town: 16 locations
- 3) Air dose rates observed in monitoring conducted by MEXT on April 12 and April 14 in Iitate village, Iwaki city, Katsurao village, Kawauchi village, Tamura city, Namie town, Hirono town, and Minamisoma city, in monitoring conducted by MEXT on June 5, 6, 10, 13, 14 and 24 in Date city, Minamisoma city, Iwaki city, and Kawauchi village, and in monitoring conducted by MEXT on April 26, May 12, 20 and 25 in Kawamata town: 411 locations
- 4) Air dose rates observed within the area covered by the isogram map in the grid survey conducted by Fukushima Prefecture from April 12 to April 16: 1,788 locations
- 5) Air dose rates observed within the area covered by the isogram map in the environmental radioactivity monitoring conducted by Fukushima Prefecture (municipalities and 7 Fukushima and areas within 20 to 50 km): 65 locations
- 6) Air dose rates observed inside the 20 km zone in monitoring conducted by MEXT and TEPCO: 178 locations
- 7) Air dose rates continuously monitored from April 12 at monitoring posts 1 to 8 near the border of the site of Fukushima Dai-ichi NPP: 8 locations
- 8) Air dose rates of distribution map of radiation dose released by MEXT on August 2: 1511 locations
- 9) Results of Radiation Monitoring under the Action Plan toward the Removal of the Designation of Emergency Evacuation Preparation Areas (Detailed) released by MEXT and Team in Charge of Assisting the Lives of Disaster Victims on August 16: 1437 locations
- 10) Results of the Wide-area Monitoring in Restricted Areas and Planned Evacuation Zones released by Team in Charge of Assisting the Lives of Disaster Victims and MEXT on September 1: 2,695 locations
- 11) Results of the real time measurement of air dose rates using portable monitoring posts installed by MEXT: 20 locations

Changes in air dose rates



Notes: In cases where more than one reading was taken during the six-hour period, the maximum value is plotted.
The dotted part does not show measured values but estimated values presuming that they are proportional to the values at location 32.

Monitoring Date