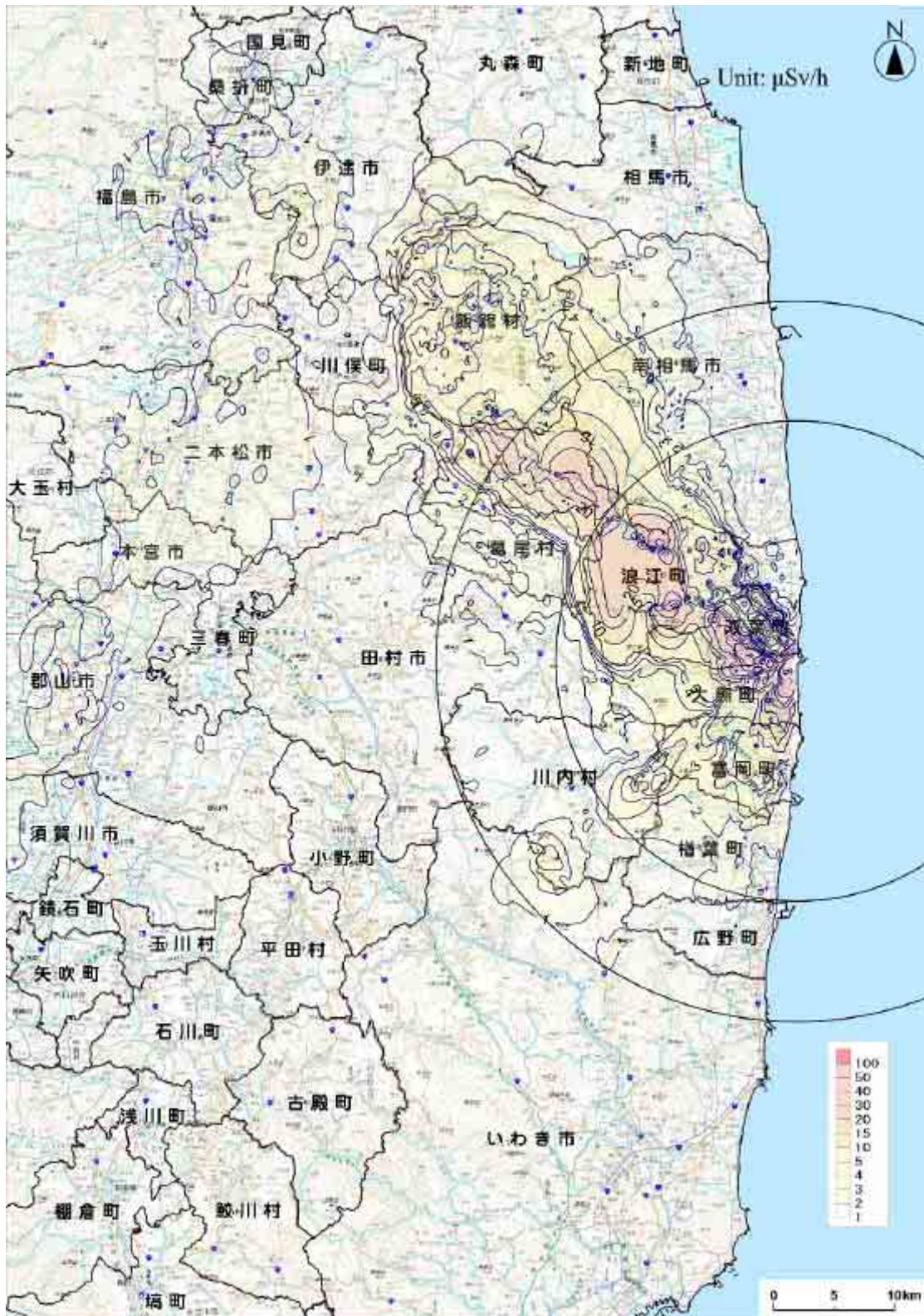


Dose Monitoring Map

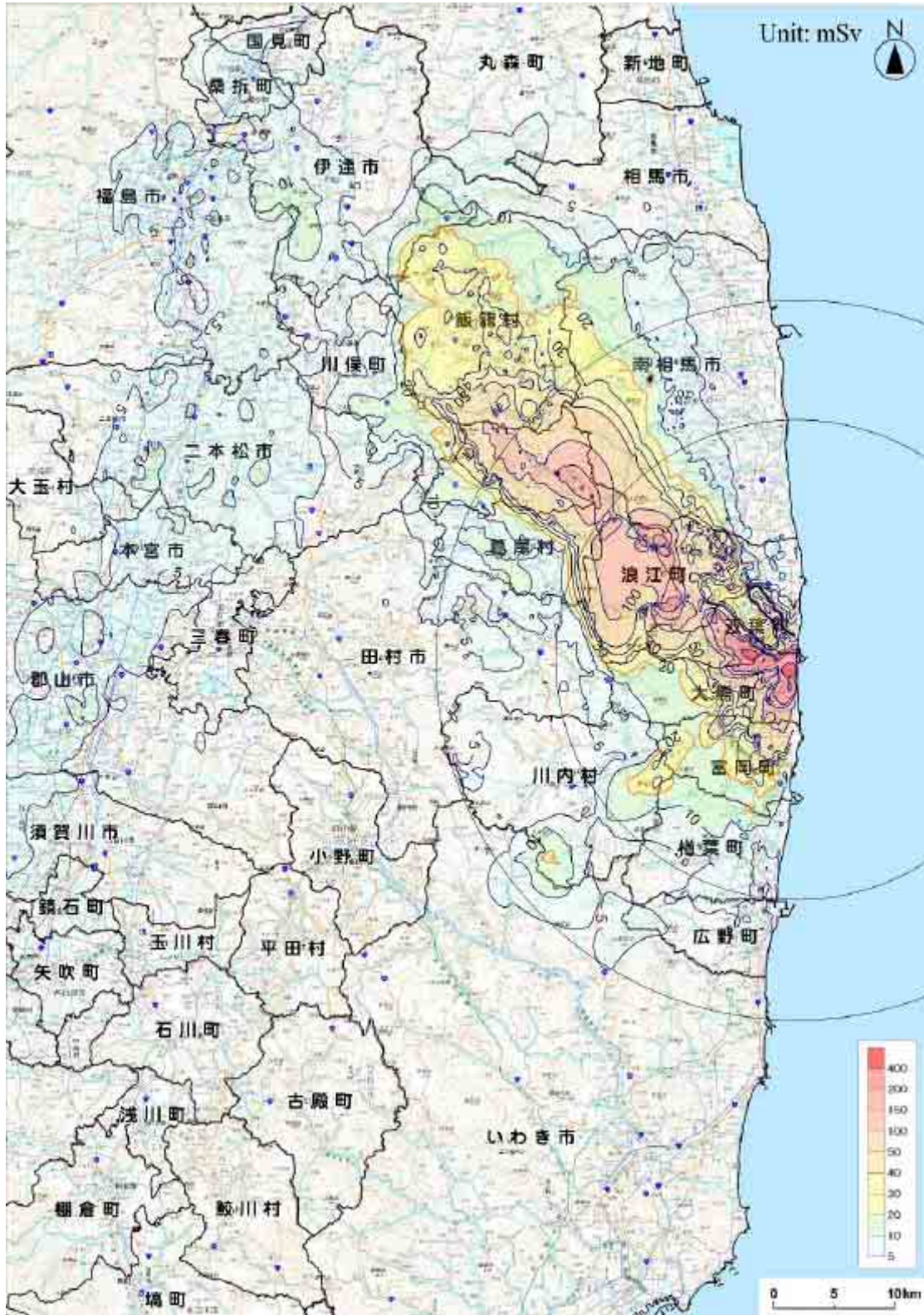
(As of November 11, 2011)



Background image: Denshi Kokudo

Integrated Dose Estimation Map

(Integrated Dose up to March 11, 2012)

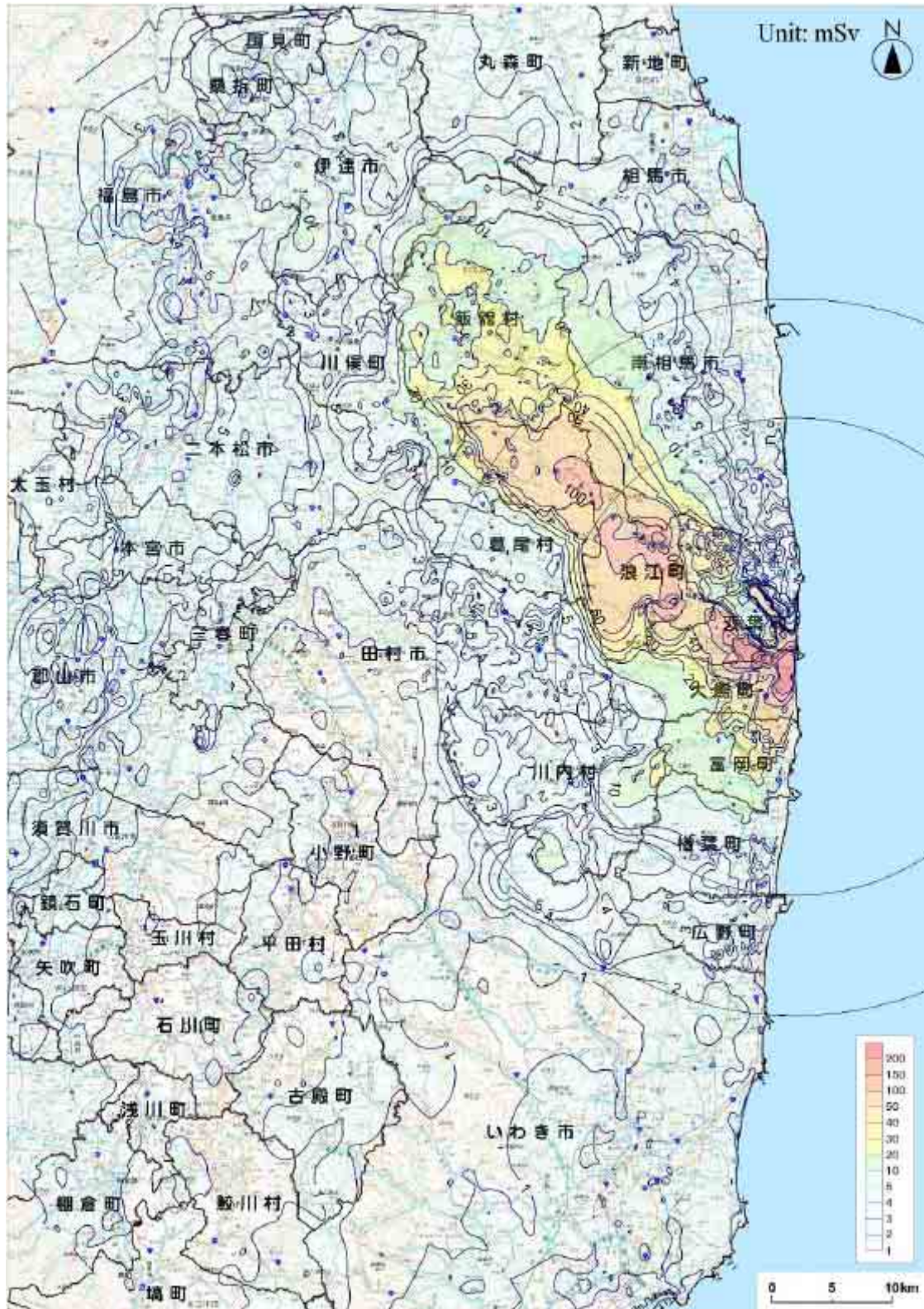


Using monitored values up to 24:00 on November 11, 2011

Background image: Denshi Kokudo

Integrated Dose Estimation Map

(Integrated Dose up to November 11, 2011)



Using monitored values up to 24:00 on November 11, 2011

Background image: Denshi Kokudo

Estimated Integrated Dose at Each Monitoring Location based on Measured Values

Location Number	Location (Monitoring Area) [*1]	From TEPCO Fukushima Dai-ichi NPP		Date on which air dose monitoring was commenced	Estimates of Integrated Dose [*2][*3][*4]	Latest Readings (Average) [*5]	Estimates of Integrated Dose as of March 11, 2012 (mSv) [*6]
		Direction	Distance		(mSv)	(mSv/h)	
(1) Planned evacuation zones							
33	Soma county Iitate village Nagadoro	North/West	33km	March 16	35.9	0.0067	47.5
62	Soma county Iitate village Kusano Taishido	North/West	39km	March 17	19.0	0.0040	26.1
61	Soma county Iitate village Yagisawa	North/West	36km	March 17	14.8	0.0032	20.4
63	Soma county Iitate village Nimaibashi	North/West	44km	March 17	5.6	0.0009	7.3
i27	Soma county Iitate village Nagadoro	North/West	33km	April 26	66.7	0.0170	96.2
i28	Soma county Iitate village Hiso	North/West	34km	April 26	63.8	0.0123	85.2
i26	Soma county Iitate village Nagadoro	North/West	31km	April 26	44.7	0.0094	61.0
i24	Soma county Iitate village Komiya Kariyaniwa	North/West	32km	April 26	37.3	0.0073	50.0
i4	Soma county Iitate village Fukaya	North/West	41km	April 25	36.0	0.0067	47.7
i25	Soma county Iitate village Warabidaira	North/West	29km	April 26	35.4	0.0066	46.9
i22	Soma county Iitate village Komiya	North/West	35km	April 26	30.4	0.0061	41.1
i13	Soma county Iitate village Maeta	North/West	43km	April 25	27.3	0.0050	36.0
i19	Soma county Iitate village Sekisawa	North/West	38km	April 26	26.6	0.0051	35.5
i20	Soma county Iitate village Sekisawa Hashiba	North/West	36km	April 26	25.6	0.0055	35.3
i29	Soma county Iitate village Hiso	North/West	38km	April 26	25.5	0.0052	34.6
i23	Soma county Iitate village Komiya	North/West	36km	April 26	24.8	0.0048	33.2
i21	Soma county Iitate village Komiya Nodegami	North/West	33km	April 26	23.7	0.0049	32.3
i6	Soma county Iitate village Fukaya	North/West	41km	April 25	24.4	0.0043	31.8
i9	Soma county Iitate village Maeta	North/West	45km	April 25	21.8	0.0045	29.7
i31	Soma county Iitate village Itoi aza Machi	North/West	38km	April 26	20.8	0.0043	28.3
i10	Soma county Iitate village Sasu	North/West	46km	April 25	20.8	0.0041	28.0
i14	Soma county Iitate village Kusano	North/West	40km	April 25	21.1	0.0037	27.6
i7	Soma county Iitate village Usuishi	North/West	42km	April 25	19.5	0.0037	26.1
i2	Soma county Iitate village Itamizawa	North/West	39km	April 25	19.1	0.0035	25.2
i32	Soma county Iitate village Itoi	North/West	37km	April 26	17.9	0.0035	24.0
i5	Soma county Iitate village Fukaya	North/West	40km	April 25	18.4	0.0032	24.0
i3	Soma county Iitate village Kusano	North/West	39km	April 25	18.2	0.0033	23.9
i11	Soma county Iitate village Sasu	North/West	46km	April 25	17.4	0.0037	23.8
i18	Soma county Iitate village Yagisawa	North/West	36km	April 25	16.4	0.0035	22.5
i1	Soma county Iitate village Itamizawa	North/West	39km	April 25	17.0	0.0030	22.2
i30	Soma county Iitate village Itoi Ohi	North/West	40km	April 26	16.5	0.0031	21.9
i17	Soma county Iitate village Kusano	North/West	38km	April 25	15.1	0.0027	19.7
i15	Soma county Iitate village Ookura	North/North/West	40km	April 25	12.1	0.0023	16.1
i12	Soma county Iitate village Sasu	North/West	43km	April 25	11.5	0.0022	15.3
i8	Soma county Iitate village Nimaibashi	North/West	44km	April 25	10.9	0.0023	14.9
i16	Soma county Iitate village Ookura	North/North/West	40km	April 25	10.0	0.0020	13.5
46	Date county Kawamata town Yamakiya Mukaideyama	West/North/West	34km	March 17	17.2	0.0039	24.0
36	Date county Kawamata town Yamakiya Oonukari	West/North/West	38km	March 20	10.5	0.0020	13.9

Estimated Integrated Dose at Each Monitoring Location based on Measured Values

Location Number	Location (Motiroring Area) [*1]	From TEPCO Fukushima Dai-ichi NPP		Date on which air dose monitoring was commenced	Estimates of Integrated Dose [*2][*3][*4]	Latest Readings (Average) [*5]	Estimates of Integrated Dose as of March 11, 2012 (mSv) [*6]
		Direction	Distance		(mSv)	(mSv/h)	
kw6	Date county Kawamata town Yamakiya Hirokuboyama	West/North/West	33km	April 26	33.7	0.0066	45.2
kw4	Date county Kawamata town Yamakiya Boyoshi	West/North/West	37km	April 26	10.9	0.0018	14.0
kw5	Date county Kawamata town Yamakiya Ishotatsuyama	West/North/West	34km	April 26	7.7	0.0014	10.1
kw3	Date county Kawamata town Yamakiya Shimonagahashi	West/North/West	40km	April 26	7.5	0.0013	9.7
21	Futaba county Katsurao village Kaminogawa	West/North/West	31km	March 17	9.9	0.0022	13.8
104	Futaba county Katsurao village oaza Ochiai aza Ochiai	West/North/West	25km	April 7	6.1	0.0010	7.8
K8	Futaba county Katsurao village Katsurao Noyuki	West/North/West	21km	April 25	77.3	0.0149	103.3
K7	Futaba county Katsurao village Katsurao Kashiwabara	West/North/West	23km	April 25	43.5	0.0092	59.5
K6	Futaba county Katsurao village Katsurao Hiroyajji	West/North/West	26km	April 25	38.5	0.0073	51.2
K9	Futaba county Katsurao village Ochiai Ozasa	West/North/West	21km	April 25	12.4	0.0024	16.6
K4	Futaba county Katsurao village Nogawa Nakanouchi	West/North/West	28km	April 25	10.0	0.0016	12.8
K11	Futaba county Katsurao village Ochiai Ohanachi	West/North/West	21km	April 25	8.5	0.0017	11.4
K1	Futaba county Katsurao village Katsurao Kazakoshi	West/North/West	32km	April 25	8.0	0.0013	10.3
K2	Futaba county Katsurao village Katsurao Nakadaira	West/North/West	30km	April 25	7.7	0.0014	10.1
K3	Futaba county Katsurao village Katsurao Higashidaira	West/North/West	28km	April 25	7.1	0.0014	9.6
K10	Futaba county Katsurao village Ochiai Ozasa	West/North/West	24km	April 25	6.3	0.0013	8.6
K5	Futaba county Katsurao village Nogawa Yuden	West/North/West	29km	April 25	6.3	0.0010	8.0
83	Futaba county Namie town Akougi Kunugidaira	North/West	24km	March 24	151.4	0.0337	210.1
81	Futaba county Namie town Akougi Ishikoya	North/West	30km	March 24	87.5	0.0200	122.3
32	Futaba county Namie town Akougi Teshichiro	North/West	31km	March 16	66.3	0.0128	88.5
79	Futaba county Namie town Shimotsushima Kayabuka	West/North/West	29km	March 16	30.9	0.0064	42.0
31	Futaba county Namie town Tsushima Nakaoki	West/North/West	30km	March 17	28.5	0.0056	38.2
34	Futaba county Namie town Tsushima Taikougi	West/North/West	30km	March 19	14.1	0.0028	18.9
n5	Futaba county Namie town Hirusone Kurabeishi	North/West	22km	April 27	161.8	0.0363	225.1
n11	Futaba county Namie town Hirusone	North/West	20km	May 2	105.7	0.0201	140.7
n2	Futaba county Namie town Akougi Kutsukubo	North/West	28km	April 27	87.6	0.0205	123.3
n1	Futaba county Namie town Akougi Teshichiro	North/West	31km	April 27	88.7	0.0189	121.7
n4	Futaba county Namie town Akougi Shiobite	North/West	26km	April 27	81.9	0.0197	116.2
n7	Futaba county Namie town Minamitsushima Shimohiyada	North/West	23km	April 27	84.7	0.0177	115.7
n6	Futaba county Namie town Minamitsushima Shimohiyada	North/West	25km	April 27	70.5	0.0162	98.7
n8	Futaba county Namie town Shimotsushima Kotsuka	West/North/West	27km	April 27	58.7	0.0123	80.0
n3	Futaba county Namie town Akougi Shiraoi	North/West	28km	April 27	52.5	0.0106	71.0
n9	Futaba county Namie town Shimotsushima aza Kayabuka	West/North/West	29km	April 27	39.1	0.0083	53.5
n10	Futaba county Namie town Hatsuke Tatenosawa	West/North/West	33km	April 27	8.4	0.0018	11.6
ms6	Minamisoma city Haramachi ward Baba aza Godaisan	North/West	21km	April 26	48.1	0.0094	64.5
ms4	Minamisoma city Haramachi ward Takanokura aza Mori	North/North/West	27km	April 26	19.9	0.0035	26.0

Estimated Integrated Dose at Each Monitoring Location based on Measured Values

Location Number	Location (Monitoring Area) [*1]	From TEPCO Fukushima Dai-ichi NPP		Date on which air dose monitoring was commenced	Estimates of Integrated Dose [*2][*3][*4]	Latest Readings (Average) [*5]	Estimates of Integrated Dose as of March 11, 2012 (mSv) [*6]
		Direction	Distance		(mSv)	(mSv/h)	
(2) Other zones							
115	Iwaki city Kawamae town Shimookeuri Ogi	South/West	28km	May 30	12.8	0.0021	16.4
114	Iwaki city Ogawa town Kamiogawa	South/West	26km	March 20	4.7	0.0011	6.6
73	Iwaki city Yotsukura town	South	35km	March 20	1.9	0.0004	2.6
72	Iwaki city Hisanohama town Hisanohama aza Kitaaramaki	South	31km	March 20	1.7	0.0004	2.4
44	Iwaki city Ohisa town Ohisa Yanomezawa	South/South/West	28km	March 17	1.9	0.0002	2.2
38	Iwaki city Yotsukura town Shiraiwa Hokita	South/South/West	34km	March 31	1.6	0.0003	2.2
106	Iwaki city Kawamae town Ojiroi aza Syokangoya	West/South/West	32km	April 7	1.1	0.0003	1.6
74	Iwaki city Ogawa town Takahagi	South/South/West	36km	March 20	1.0	0.0002	1.4
84	Iwaki city Miwa-town Saiso	South/West	39km	March 26	0.8	0.0002	1.1
75	Iwaki city Uchigoumiyamaya town	South/South/West	43km	March 20	0.7	0.0001	0.9
174	Iwaki city Ogawa town Takahagi	South/South/West	36km	May 23	0.3	0.0000	0.3
86	Koriyama city Ootsuki town Choemonbayashi	West	63km	March 27	3.4	0.0006	4.5
ko3	Koriyama city Toyota town	West	59km	April 3	7.1	0.0014	9.6
ko1	Koriyama city Tsurumidan	West	59km	April 25	5.9	0.0009	7.4
ko2	Koriyama city Saikon	West	59km	April 25	5.3	0.0009	6.9
39	Soma city Yamakami Kaminamiki	North/North/West	41km	April 1	2.2	0.0004	2.9
5	Soma city Nakanoteramae	North/North/West	42km	March 17	1.7	0.0003	2.2
4	Date county Kawamata town oaza Tsurusawa aza Kawabata	North/West	47km	March 17	3.6	0.0007	4.9
78	Date county Kawamata town Tsurusawa	North/West	48km	March 20	3.0	0.0009	4.6
kw1	Date county Kawamata town Kotsunagi Ushirozawa	North/West	42km	April 26	5.5	0.0009	7.2
kw2	Date county Kawamata town Kotsunagi Kamihagane	North/West	42km	April 26	5.0	0.0008	6.4
37	Date city Ryozen town Ishida Hojizawa	North/West	48km	March 31	13.5	0.0028	18.4
3	Date city Ryozen town Ishida Hikohei	North/West	46km	March 17	8.7	0.0019	12.0
102	Date city Tsukidate town	North/West	51km	April 7	4.3	0.0008	5.7
101	Date city Ryozen town Oishi aza Minowa	North/West	55km	April 7	2.7	0.0001	2.9
d4	Date city Ryozen town Kamioguni Chabatake	North/West	55km	April 27	13.7	0.0028	18.6
d2	Date city Ryozen town Shimooguni Takayashiki	North/West	55km	April 27	12.1	0.0025	16.5
d5	Date city Ryozen town Ishida Hojizawa	North/West	48km	April 27	10.5	0.0022	14.2
d3	Date city Ryozen town Kamioguni Matsusaka	North/West	55km	April 27	10.2	0.0022	14.1
d14	Date city Ryozen town Kamioguni Chabatake	North/West	55km	September 15	8.5	0.0016	11.3
177	Futaba county Kawauchi village Shimokawauchi	South/West	25km	May 23	4.2	0.0008	5.6
87	Futaba county Kawauchi village Kamikawauchi Hananouchi	West/South/West	29km	March 27	2.8	0.0005	3.7
111	Futaba county Kawauchi village Kamikawauchi	West/South/West	28km	May 18	2.7	0.0005	3.5
181	Futaba county Kawauchi village Kamikawauchi	West/South/West	25km	May 20	2.2	0.0004	3.0
43	Futaba county Kawauchi village Shimokawauchi Miyawata	West/South/West	22km	March 16	1.7	0.0004	2.3
76	Futaba county Kawauchi village Kamikawauchi Hayawata	West/South/West	22km	March 20	1.5	0.0003	2.0
45	Futaba county Naraha town Yamadaoka Utsukushimori	South	20km	March 17	2.7	0.0004	3.5

Estimated Integrated Dose at Each Monitoring Location based on Measured Values

Location Number	Location (Monitoring Area) [*1]	From TEPCO Fukushima Dai-ichi NPP		Date on which air dose monitoring was commenced	Estimates of Integrated Dose [*2][*3][*4]	Latest Readings (Average) [*5]	Estimates of Integrated Dose as of March 11, 2012 (mSv) [*6]
		Direction	Distance		(mSv)	(mSv/h)	
112	Futaba county Hirono town Kamiyamigawa	South/South/West	24km	May 18	2.6	0.0006	3.6
71	Futaba county Hirono town Shimokitaba Nawashirogae	South	23km	March 20	2.1	0.0004	2.7
51	Tamura county Ono town Ononiimachi Tatemawari	West/South/West	39km	March 17	0.8	0.0001	0.9
113	Tamura city Miyakoji town Furumichi Iwasawa	West	25km	May 20	5.6	0.0010	7.3
110	Tamura city Miyakoji town Furumichi	West	25km	May 18	4.4	0.0006	5.5
42	Tamura city Tokiwa town Yamane Tomioka	West	33km	March 17	2.9	0.0007	4.0
15	Tamura city Tokiwa town Yamane Kashima	West	32km	March 17	2.7	0.0004	3.4
41	Tamura city Miyakoji town Furumichi	West	21km	March 17	2.3	0.0005	3.1
23	Tamura city Funehiki town Minamiutsushi Suicyuuchi	West/North/West	37km	March 17	2.2	0.0005	3.0
20	Tamura city Funehiki town Niitate shimo	West	41km	March 17	1.8	0.0004	2.5
22	Tamura city Huneiki town Kamiutsushi aza Ushirota	West/North/West	35km	March 17	1.4	0.0003	1.8
105	Tamura city Miyakoji town Furumichi aza Teranomae	West	21km	April 7	1.3	0.0003	1.8
12	Tamura city Funehiki town Funehiki aza Ozawakawashiro	West	39km	March 17	1.1	0.0003	1.6
13	Tamura city Tokiwa town Nishimuki Yakata	West	37km	March 17	1.1	0.0002	1.4
14	Tamura city Tokiwa town Tokiwa Uchimachi	West	34km	March 17	1.0	0.0002	1.4
52	Tamura city Funehiki town funehiki Babakawara	West	41km	March 17	0.9	0.0002	1.2
11	Nihonmatsu city Ota aza Shimoda	West/North/West	43km	March 17	4.1	0.0008	5.5
35	Nihonmatsu city Tazawahagidaira	West/North/West	37km	March 19	3.3	0.0009	4.8
10	Nihonmatsu city Harimichi Nakajima	West/North/West	44km	March 17	2.7	0.0005	3.5
ni1	Nihonmatsu city Kamikawasaki Itouchi	West/North/West	51km	April 25	5.1	0.0008	6.6
ni2	Nihonmatsu city Tazawa Shimomagariyama	West/North/West	36km	April 26	3.7	0.0006	4.8
2	Fukushima city Onami Takinoiri	North/West	56km	March 17	7.2	0.0011	9.2
88	Fukushima city Hikarigaoka	West/North/West	58km	April 3	4.2	0.0004	4.8
1	Fukushima city Sugitsuma town	North/West	62km	March 16	2.9	0.0005	3.8
85	Fukushima city Arai Harajiku	West/North/West	66km	March 27	1.5	0.0003	2.0
d11	Fukushima city Higashihama town	North/West	61km	April 27	7.4	0.0017	10.3
d13	Fukushima city Nankodai	North/West	59km	April 27	7.3	0.0013	9.6
d6	Fukushima city Koganeyama	North/West	62km	April 27	6.5	0.0012	8.6
d1	Fukushima city Minamiyanome Michishita	North/West	66km	April 27	6.3	0.0013	8.6
d8	Fukushima city Miyashita town	North/West	63km	April 27	4.8	0.0012	7.0
d12	Fukushima city Watari	North/West	61km	April 27	4.9	0.0006	5.8
d7	Fukushima city Sankyoue	North/West	63km	April 27	3.9	0.0006	4.8
d10	Fukushima city Kamihama town	North/West	61km	April 27	3.9	0.0005	4.8
d9	Fukushima city Shinhama town	North/West	62km	April 27	3.0	0.0004	3.7
108	Minamisoma city Haramachi ward Ohara Daihata	North/North/West	29km	April 7	10.0	0.0019	13.3
107	Minamisoma city Haramachi ward Baba Shimonakanouchi	North/North/West	23km	April 7	7.1	0.0007	8.3
6	Minamisoma city Kashima ward Nishimachi	North	32km	March 17	3.1	0.0008	4.4
7	Minamisoma city Kashima ward Terauchi Motoyashiki	North	32km	March 17	2.3	0.0005	3.2
103	Minamisoma city Haramachi ward Taka Mamegarauchi	North	21km	April 7	1.8	0.0003	2.4
80	Minamisoma city Haramachi ward Takami town	North	24km	March 20	1.5	0.0002	1.8

Estimated Integrated Dose at Each Monitoring Location based on Measured Values

Location Number	Location (Motiroring Area) [*1]	From TEPCO Fukushima Dai-ichi NPP		Date on which air dose monitoring was commenced	Estimates of Integrated Dose [*2][*3][*4]	Latest Readings (Average) [*5]	Estimates of Integrated Dose as of March 11, 2012 (mSv) [*6]
		Direction	Distance		(mSv)	(mSv/h)	
ms1	Minamisoma city Haramachi ward Ohara aza Hebiishi	North/North/West	33km	April 26	15.3	0.0031	20.7
ms5	Minamisoma city Haramachi ward Takakura aza Domae	North/North/West	26km	April 26	12.3	0.0024	16.4
ms11	Minamisoma city Haramachi ward Ohara aza Daihata	North/North/West	29km	April 26	9.2	0.0015	11.8
ms2	Minamisoma city Kashima ward Jisabara aza Kamahai	North/North/West	32km	April 26	7.3	0.0014	9.7
ms3	Minamisoma city Kashima ward Kamitochikubo aza Kanodai	North/North/West	37km	April 26	5.0	0.0011	6.9
ms7	Minamisoma city Haramachi ward Baba aza Nakouchi	North/North/West	23km	April 26	4.7	0.0006	5.8
ms9	Minamisoma city Haramachi ward Takami town	North	24km	April 26	1.5	0.0003	2.1
ms10	Minamisoma city Haramachi ward taka aza Mamegarauchi	North	21km	April 26	1.2	0.0004	1.9
ms8	Minamisoma city Haramachi ward Kanezawa aza Oiai	North	28km	April 26	1.1	0.0003	1.6
mo1	Motomiya city Wada	West/North/West	52km	April 25	8.9	0.0014	11.4
(3) The emergency evacuation preparation areas							
31	Tamura city Miyakoji town Furumichi	West/South/West	18km	May 6	5.4	0.0011	7.3
24	Tamura city Miyakoji town Furumichi	West	17km	May 6	4.7	0.0009	6.3
37	Futaba county Okuma town Koirino	West/South/West	3.0km	May 6	369.3	0.0647	482.0
29	Futaba county Okuma town oaza Ottozawa	West	2.4km	May 6	285.3	0.0545	380.2
47	Futaba county Okuma town oaza Kumagawa	South/South/West	3.7km	May 6	167.7	0.0309	221.6
36	Futaba county Okuma town Shimonogami	West/South/West	4.8km	May 6	146.1	0.0293	197.2
30	Futaba county Okuma town oaza Ottozawa	West	2.6km	May 6	124.1	0.0235	165.0
23	Futaba county Okuma town oaza Ottozawa	West/North/West	2.3km	May 6	106.0	0.0184	138.0
50	Futaba county Okuma town oaza Kumagawa	South	4.0km	May 6	92.7	0.0161	120.7
35	Futaba county Okuma town oaza Nogami	West/South/West	6.6km	May 6	71.6	0.0127	93.7
38	Futaba county Okuma town Koirino	West/South/West	3.4km	May 6	59.6	0.0093	75.7
34	Futaba county Okuma town Ogawara	West/South/West	7.5km	May 6	17.1	0.0031	22.5
26	Futaba county Okuma town oaza Nogami	West	11km	May 6	17.1	0.0031	22.5
25	Futaba county Okuma town oaza Nogami	West	14km	May 6	14.7	0.0034	20.6
32	Futaba county Kawauchi village Shimokawauchi	West/South/West	20km	May 6	8.2	0.0016	10.9
33	Futaba county Kawauchi village Shimokawauchi	West/South/West	15km	May 6	5.5	0.0010	7.2
46	Futaba county Tomioka town oaza Oragahama	South/South/West	5.6km	May 6	85.0	0.0143	109.8
45	Futaba county Tomioka town oaza Motooka	South/South/West	7.1km	May 6	56.1	0.0098	73.1
42	Futaba county Tomioka town oaza Kamiteoka	South/West	7.9km	May 6	36.4	0.0064	47.5
39	Futaba county Tomioka town oaza Kamiteoka	South/West	13km	May 6	27.4	0.0048	35.8
49	Futaba county Tomioka town oaza Kobama	South	9.4km	May 6	20.3	0.0041	27.4
54	Futaba county Tomioka town oaza Kamiteoka	South/West	11km	October 4	17.1	0.0035	23.2
43	Futaba county Tomioka town oaza Kamikoriyama	South/South/West	13km	May 6	15.7	0.0024	19.8
40	Futaba county Tomioka town oaza Kamiteoka	West/South/West	10km	May 6	9.8	0.0018	12.9

Estimated Integrated Dose at Each Monitoring Location based on Measured Values

Location Number	Location (Monitoring Area) [*1]	From TEPCO Fukushima Dai-ichi NPP		Date on which air dose monitoring was commenced	Estimates of Integrated Dose [*2][*3][*4]	Latest Readings (Average) [*5]	Estimates of Integrated Dose as of March 11, 2012 (mSv) [*6]
		Direction	Distance		(mSv)	(mSv/h)	
55	Futaba county Namie town oaza Ide	West/North/West	10km	October 25	158.3	0.0306	211.6
19	Futaba county Namie town Kawabusa	North/West	19km	May 6	159.5	0.0294	210.8
53	Futaba county Namie town oaza Ide	West/North/West	11km	October 4	114.6	0.0234	155.5
14	Futaba county Namie town Hirusone	North/West	20km	May 6	100.5	0.0250	144.1
21	Futaba county Namie town oaza Ide	West/North/West	9.1km	May 6	108.1	0.0188	140.8
20	Futaba county Namie town oaza Omaru	West/North/West	12km	May 6	102.9	0.0216	140.4
15	Futaba county Namie town Murohara	North/West	16km	May 6	95.4	0.0149	121.3
17	Futaba county Namie town oaza Suemori	North/West	11km	May 6	46.4	0.0062	57.2
9	Futaba county Namie town Sakai	North/North/West	7.3km	May 6	42.6	0.0054	51.9
13	Futaba county Namie town oaza Tatsuno	North/West	14km	May 6	32.0	0.0081	46.1
16	Futaba county Namie town oaza Tatsuno	North/North/West	11km	May 6	26.5	0.0049	35.0
2	Futaba county Namie town oaza Kitakiyohashi	North	8km	May 6	2.9	0.0004	3.6
44	Futaba county Naraha town Kamishigeoka	South/South/West	14km	May 6	11.0	0.0018	14.2
41	Futaba county Naraha town oaza Ide	South/West	15km	May 6	9.3	0.0016	12.1
52	Futaba county Naraha town oaza Kamikobana	South/South/West	18km	September 14	4.2	0.0009	5.8
48	Futaba county Naraha town oaza Ide	South	16km	May 6	3.6	0.0007	4.8
8	Futaba county Futaba town oaza Nagatsuka	North/North/West	4.8km	May 6	123.3	0.0241	165.4
27	Futaba county Futaba town Ishikuma	West/North/West	7.3km	May 6	87.2	0.0142	111.8
28	Futaba county Futaba town oaza Yamada	West	7.1km	May 6	47.4	0.0087	62.5
10	Futaba county Futaba town oaza Nagatsuka	North/North/West	4.1km	May 6	48.4	0.0058	58.5
22	Futaba county Futaba town oaza Maeta	West/North/West	3.6km	May 6	39.4	0.0060	49.8
18	Futaba county Futaba town Terasawa	North/West	7.0km	May 6	30.8	0.0054	40.2
11	Futaba county Futaba town oaza Shinzan	North/West	3.5km	May 6	21.1	0.0039	27.9
12	Minamisoma city Odaka ward Kanaya	North/West	18km	May 6	40.0	0.0082	54.3
51	Minamisoma city Odaka ward Kawabusa	North/West	16km	May 6	22.5	0.0054	31.9
6	Minamisoma city Odaka ward Otomi	North/North/West	19km	May 6	8.8	0.0021	12.4
7	Minamisoma city Odaka ward Kamiyama	North/North/West	13km	May 6	9.0	0.0016	11.7
3	Minamisoma city Odaka ward Katakusa	North/North/West	18km	May 6	4.8	0.0008	6.2
4	Minamisoma city Odaka ward Izumisawa	North/North/West	14km	May 6	3.0	0.0006	4.1
1	Minamisoma city Odaka ward Oi	North	16km	May 6	2.7	0.0006	3.7
5	Minamisoma city Odaka ward Namedu	North/North/West	11km	May 6	2.5	0.0005	3.4

This table was jointly compiled by the Nuclear Safety Commission, MEXT, and the Nuclear and Industrial Safety Agency.

*1: Information on the latitude and longitude of each monitoring spot is available on the MEXT website

*2: Shown values are integrated values monitored from 6:00, March 12 through 24:00, November 11. The same estimation method as that used by the Nuclear Safety Commission on March 26, 2011 is used, whereby the values are estimated by multiplying the monitored values by 0.6 in consideration of the reduction effect of wooden buildings (0.4) when staying outdoors for eight hours and indoors for 16 hours.

*3: For locations where the monitoring was started on or after March 19, the dose data for the period from March 17 to the day before the start of monitoring has been derived by assuming that the dose has changed in proportion to changes at Location No. 32, where the steepest dose change has been observed.

*4: For the period where actual values monitored by a simple integrating dosimeter are available, such values are indicated

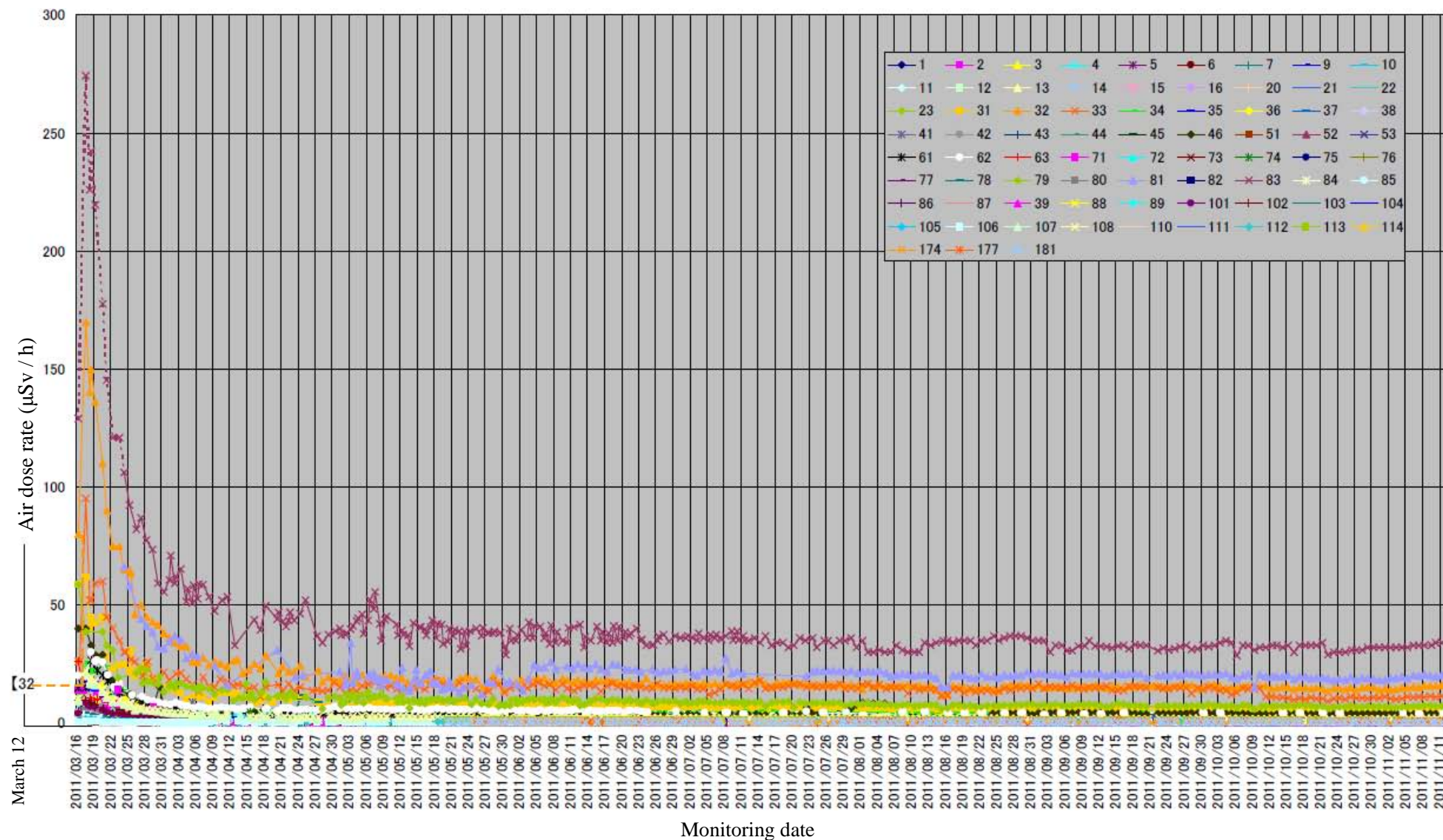
*5: The average of the estimates from November 9 to November 11. Where no measurement results are available for the period from November 9 to November 11, average values are calculated, presuming that the values on or after the last measurement date are proportional to the air doses measured at point 32. As for locations where actual values have been obtained by a simple integrating dosimeter, this is the average (from November 9 to November 11) of the integrated values monitored since the time of the previous data sampling divided by the time lapsed.

*6: Shown values have been obtained while supposing that the latest monitored values (the average) [*5] will stay unchanged on and after November 12.

In the isogram map of estimated integrated doses, the values for a total of 8,422 air dose monitoring locations were used (the 216 locations mentioned above plus the 8,206 locations below).

- 1) Air dose rates observed in the emergency environmental monitoring conducted by Fukushima Prefecture from March 30 to November 11: 97 locations
- 2) Air dose rates observed in monitoring conducted by MEXT on April 9 in Katsurao village and Namie town: 16 locations
- 3) Air dose rates observed in monitoring conducted by MEXT on April 12 and April 14 in Iitate village, Iwaki city, Katsurao village, Kawauchi village, Tamura city, Namie town, Hirono town, and Minamisoma city, in monitoring conducted by MEXT on June 5, 6, 10, 13, 14 and 24 in Date city, Minamisoma city, Iwaki city, and Kawauchi village, and in monitoring conducted by MEXT on April 26, May 12, 20 and 25 in Kawamata town: 411 locations
- 4) Air dose rates observed within the area covered by the isogram map in the grid survey conducted by Fukushima Prefecture from April 12 to April 16: 1,788 locations
- 5) Air dose rates observed within the area covered by the isogram map in the environmental radioactivity monitoring conducted by Fukushima Prefecture (municipalities and 7 regions in Fukushima and areas within 20 to 50 km): 65 locations
- 6) Air dose rates observed inside the 20 km zone in monitoring conducted by MEXT and TEPCO: 178 locations
- 7) Air dose rates continuously monitored from April 12 at monitoring posts 1 to 8 near the border of the site of Fukushima Dai-ichi NPP: 8 locations
- 8) Air dose rates of distribution map of radiation dose released by MEXT on August 2: 1511 locations
- 9) Readings of Radiation Monitoring under the Action Plan toward the Removal of the Designation of Emergency Evacuation Preparation Areas (Detailed) released by MEXT and Team in Charge of Assisting the Lives of Disaster Victims on August 16: 1437 locations
- 10) Readings of the Wide-area Monitoring in Restricted Areas and Planned Evacuation Zones released by Team in Charge of Assisting the Lives of Disaster Victims and MEXT on September 1 : 2,695 locations

Changes in air dose rates



Notes: In cases where more than one reading was taken during the six-hour period, the maximum value is plotted.
The dotted lines show estimates assumed as being proportional to the values at location 32, not measured values.