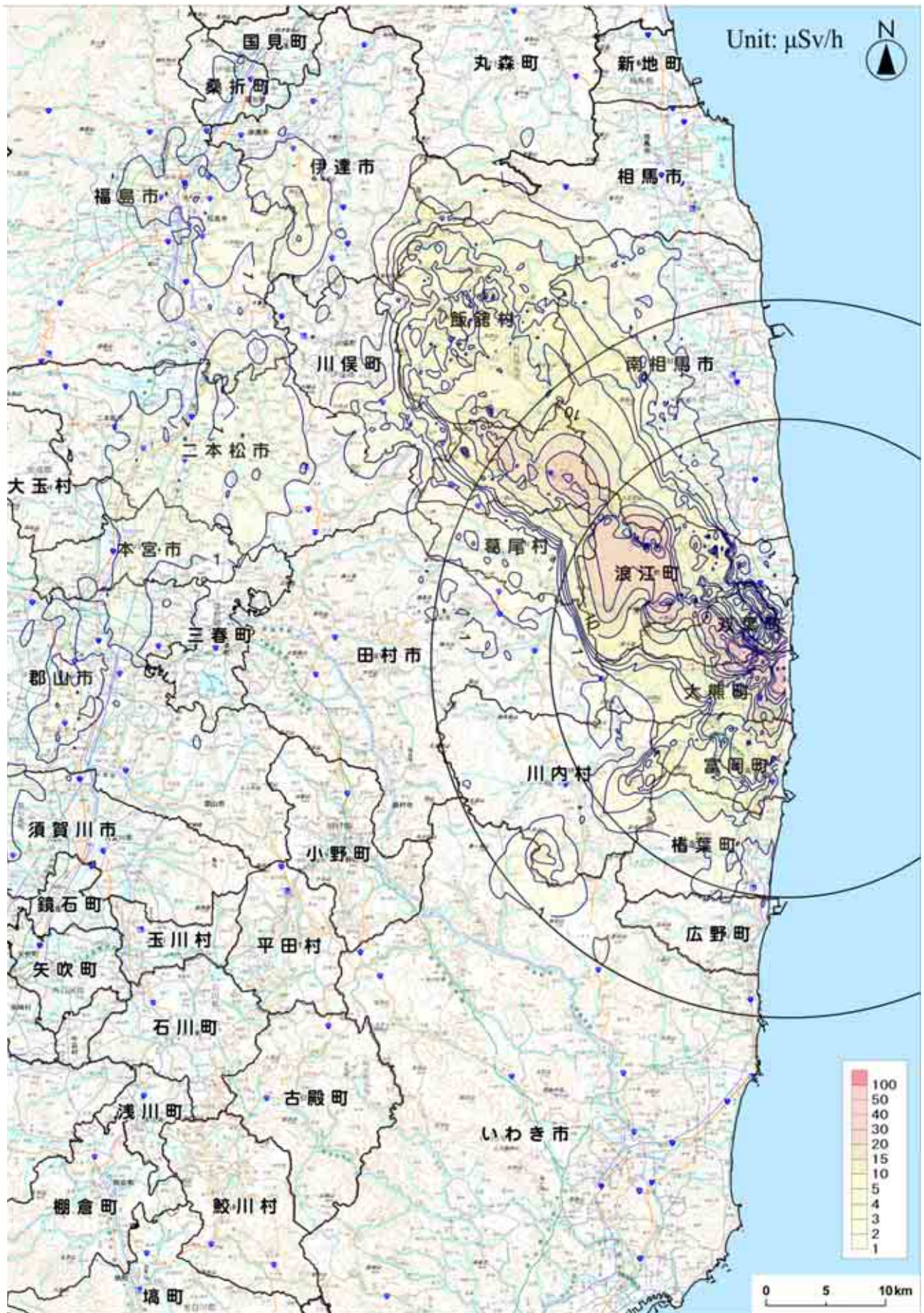
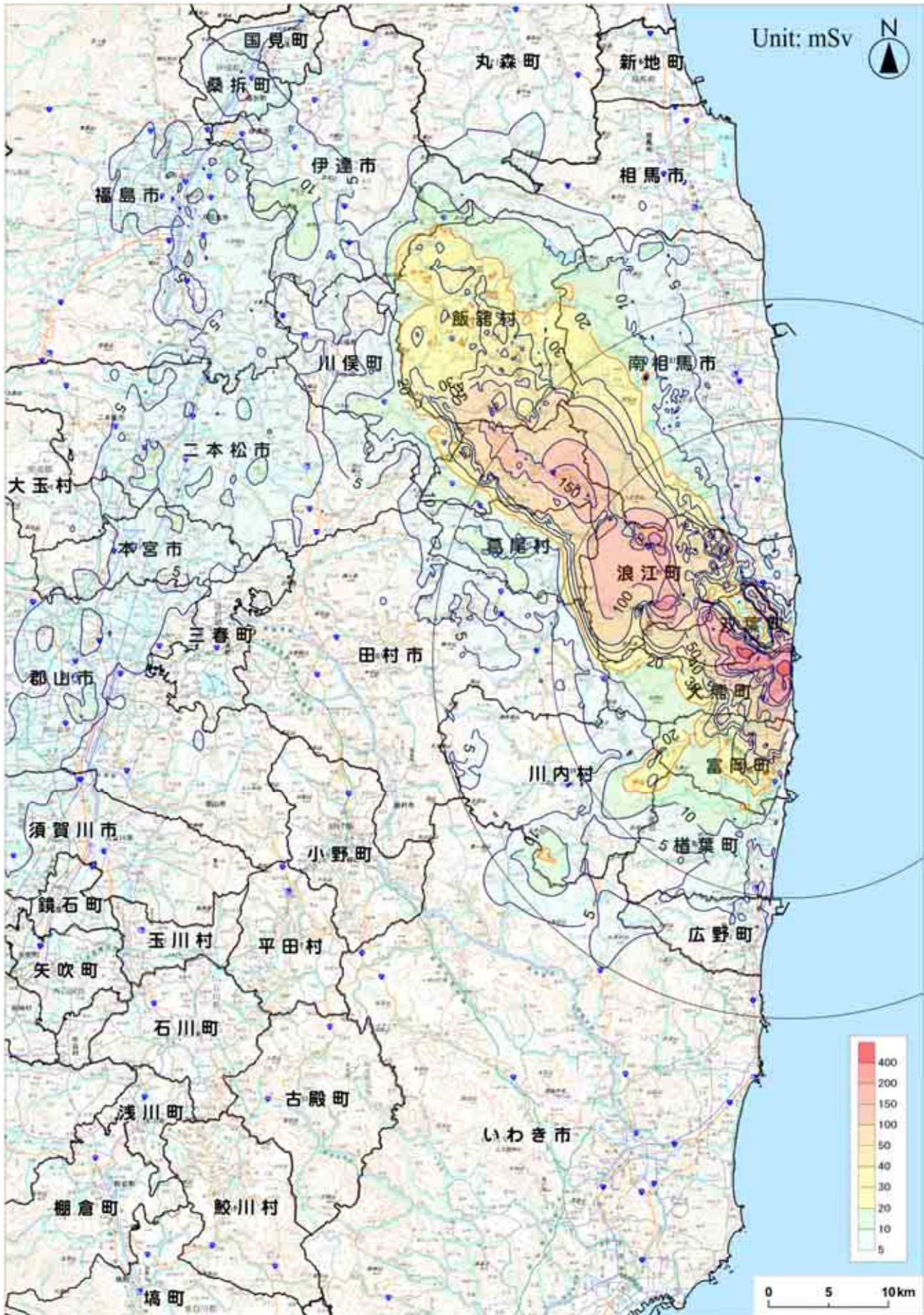


# Dose Monitoring Map (As of December 11, 2011)





# Integrated Dose Estimation Map (Integrated Dose up to March 11, 2012)

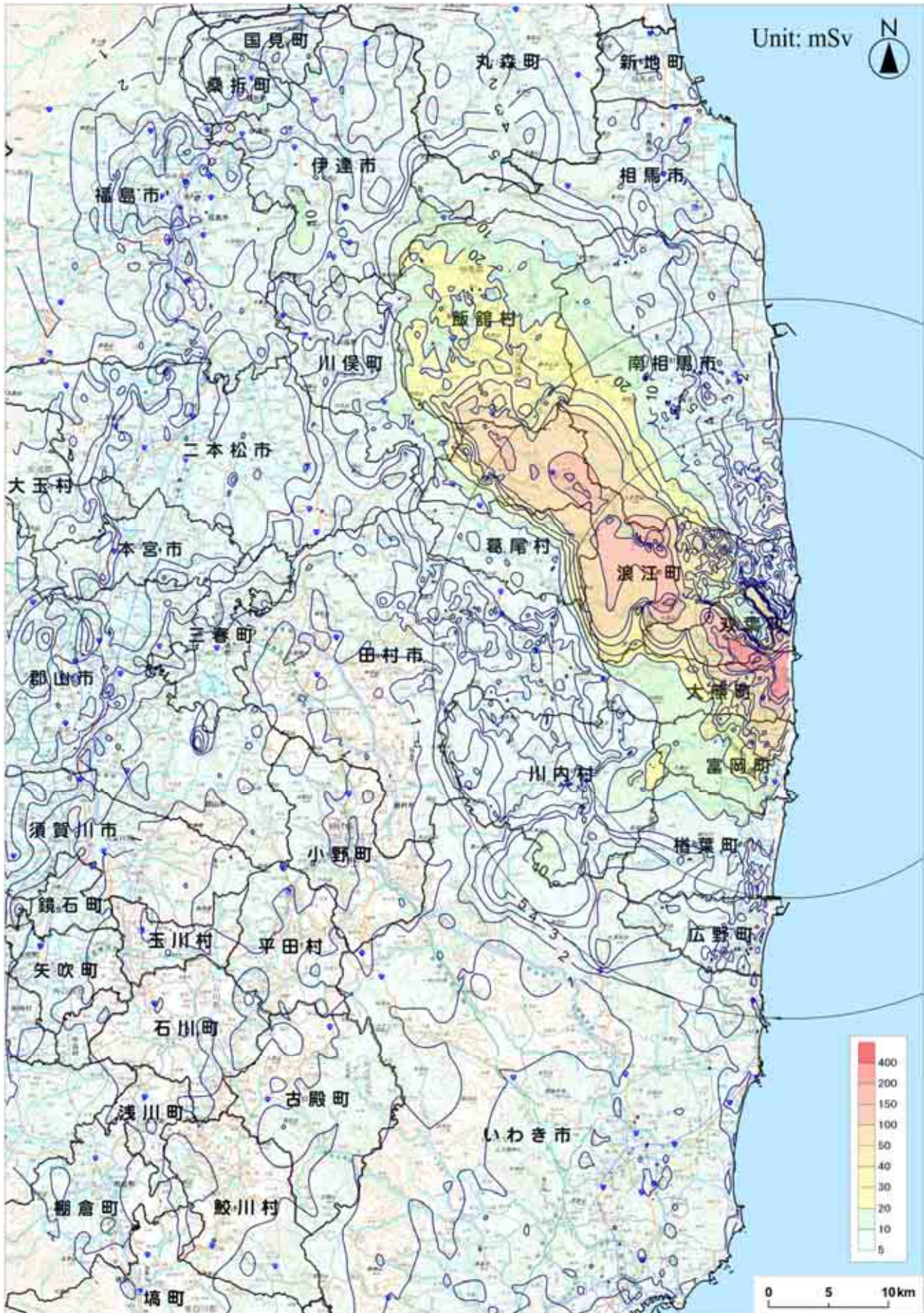


Using monitored values up to 24:00 on December 11, 2011

Background image: Denshi Kokudo



# Integrated Dose Estimation Map ( Integrated Dose up to December 11, 2011 )



Using monitored values up to 24:00 on December 11, 2011

Background image: Denshi Kokudo

## Estimated Integrated Dose at Each Monitoring Location based on Measured Values

Location Number	Location (Monitoring Area) [*1]	From TEPCO Fukushima Dai-ichi NPP		Date on which air dose monitoring was commenced	Estimates of Integrated Dose	Latest Readings (Average) [*5]	Estimates of Integrated Dose as of March 11, 2012 (mSv) [*6]
		Direction	Distance		[*2][*3][*4] (mSv)	(mSv/h)	
(1) Planned evacuation zones							
33	Soma county Iitate village Nagadoro	North/West	33 km	March 16	38.7	0.0065	47.2
62	Soma county Iitate village Kusano Taishido	North/West	39 km	March 17	20.8	0.0043	26.4
61	Soma county Iitate village Yagisawa	North/West	36 km	March 17	16.2	0.0034	20.6
63	Soma county Iitate village Nimaibashi	North/West	44 km	March 17	6.1	0.0010	7.4
i27	Soma county Iitate village Nagadoro	North/West	33 km	April 26	73.4	0.0152	93.3
i28	Soma county Iitate village Hiso	North/West	34 km	April 26	68.5	0.0100	81.6
i26	Soma county Iitate village Nagadoro	North/West	31 km	April 26	48.4	0.0082	59.1
i24	Soma county Iitate village Komiya Kariyaniwa	North/West	32 km	April 26	40.3	0.0073	49.8
i4	Soma county Iitate village Fukaya	North/West	41 km	April 25	38.9	0.0070	48.1
i25	Soma county Iitate village Warabidaira	North/West	29 km	April 26	38.0	0.0057	45.4
i22	Soma county Iitate village Komiya	North/West	35 km	April 26	32.9	0.0057	40.3
i13	Soma county Iitate village Maeta	North/West	43 km	April 25	29.4	0.0051	36.2
i19	Soma county Iitate village Sekisawa	North/West	38 km	April 26	28.8	0.0049	35.2
i20	Soma county Iitate village Sekisawa Hashiba	North/West	36 km	April 26	27.9	0.0050	34.4
i29	Soma county Iitate village Hiso	North/West	38 km	April 26	27.6	0.0045	33.5
i23	Soma county Iitate village Komiya	North/West	36 km	April 26	26.8	0.0045	32.7
i21	Soma county Iitate village Komiya Nodegami	North/West	33 km	April 26	25.7	0.0045	31.7
i6	Soma county Iitate village Fukaya	North/West	41 km	April 25	26.1	0.0041	31.5
i9	Soma county Iitate village Maeta	North/West	45 km	April 25	23.5	0.0038	28.5
i31	Soma county Iitate village Itoi aza Machi	North/West	38 km	April 26	22.4	0.0039	27.5
i14	Soma county Iitate village Kusano	North/West	40 km	April 25	22.6	0.0036	27.4
i10	Soma county Iitate village Sasu	North/West	46 km	April 25	22.4	0.0038	27.3
i7	Soma county Iitate village Usuiishi	North/West	42 km	April 25	21.1	0.0035	25.7
i2	Soma county Iitate village Itamizawa	North/West	39 km	April 25	20.6	0.0034	25.0
i5	Soma county Iitate village Fukaya	North/West	40 km	April 25	19.8	0.0033	24.1
i3	Soma county Iitate village Kusano	North/West	39 km	April 25	19.6	0.0033	23.9
i32	Soma county Iitate village Itoi	North/West	37 km	April 26	19.4	0.0032	23.6
i11	Soma county Iitate village Sasu	North/West	46 km	April 25	18.8	0.0032	23.0
i18	Soma county Iitate village Yagisawa	North/West	36 km	April 25	17.9	0.0036	22.7
i1	Soma county Iitate village Itamizawa	North/West	39 km	April 25	18.3	0.0028	22.1
i30	Soma county Iitate village Itoi Ohi	North/West	40 km	April 26	17.7	0.0026	21.2
i17	Soma county Iitate village Kusano	North/West	38 km	April 25	16.2	0.0027	19.8
i15	Soma county Iitate village Ookura	North/North/West	40 km	April 25	13.0	0.0021	15.8
i12	Soma county Iitate village Sasu	North/West	43 km	April 25	12.3	0.0021	15.0
i8	Soma county Iitate village Nimaibashi	North/West	44 km	April 25	11.9	0.0021	14.7
i16	Soma county Iitate village Ookura	North/North/West	40 km	April 25	10.8	0.0022	13.8
46	Date county Kawamata town Yamakiya Mukaideyama	West/North/West	34 km	March 17	18.9	0.0038	23.9
36	Date county Kawamata town Yamakiya Oonukari	West/North/West	38 km	March 20	11.3	0.0017	13.5



## Estimated Integrated Dose at Each Monitoring Location based on Measured Values

Location Number	Location (Monitoring Area) [*1]	From TEPCO Fukushima Dai-ichi NPP		Date on which air dose monitoring was commenced	Estimates of Integrated Dose [*2][*3][*4]	Latest Readings (Average) [*5]	Estimates of Integrated Dose as of March 11, 2012 (mSv) [*6]
		Direction	Distance		(mSv)	(mSv/h)	
kw6	Date county Kawamata town Yamakiya Hirokuboyama	West/North/West	33 km	April 26	36.5	0.0061	44.4
kw4	Date county Kawamata town Yamakiya Boyoshi	West/North/West	37 km	April 26	11.6	0.0016	13.7
kw5	Date county Kawamata town Yamakiya Ishotatsuyama	West/North/West	34 km	April 26	8.3	0.0014	10.1
kw3	Date county Kawamata town Yamakiya Shimonagahashi	West/North/West	40 km	April 26	8.0	0.0013	9.7
21	Futaba county Katsurao village Kaminogawa	West/North/West	31 km	March 17	10.8	0.0021	13.5
104	Futaba county Katsurao village oaza Ochiai aza Ochiai	West/North/West	25 km	April 7	6.5	0.0008	7.6
K8	Futaba county Katsurao village Katsurao Noyuki	West/North/West	21 km	April 25	83.2	0.0132	100.5
K7	Futaba county Katsurao village Katsurao Kashiwabara	West/North/West	23 km	April 25	47.4	0.0094	59.8
K6	Futaba county Katsurao village Katsurao Hiroyaji	West/North/West	26 km	April 25	41.5	0.0070	50.8
K9	Futaba county Katsurao village Ochiai Ozasa	West/North/West	21 km	April 25	13.4	0.0021	16.1
K4	Futaba county Katsurao village Nogawa Nakanouchi	West/North/West	28 km	April 25	10.7	0.0015	12.7
K11	Futaba county Katsurao village Ochiai Ohanachi	West/North/West	21 km	April 25	9.2	0.0016	11.3
K1	Futaba county Katsurao village Katsurao Kazakoshi	West/North/West	32 km	April 25	8.6	0.0013	10.3
K2	Futaba county Katsurao village Katsurao Nakadaira	West/North/West	30 km	April 25	8.3	0.0014	10.1
K3	Futaba county Katsurao village Katsurao Higashidaira	West/North/West	28 km	April 25	7.7	0.0014	9.5
K10	Futaba county Katsurao village Ochiai Ozasa	West/North/West	24 km	April 25	6.8	0.0011	8.3
K5	Futaba county Katsurao village Nogawa Yuden	West/North/West	29 km	April 25	6.7	0.0010	8.0
83	Futaba county Namie town Akougi Kunugidaira	North/West	24 km	March 24	165.1	0.0298	204.2
81	Futaba county Namie town Akougi Ishikoya	North/West	30 km	March 24	95.5	0.0177	118.6
32	Futaba county Namie town Akougi Teshichiro	North/West	31 km	March 16	71.8	0.0128	88.5
79	Futaba county Namie town Shimotsushima Kayabuka	West/North/West	29 km	March 16	33.5	0.0061	41.5
31	Futaba county Namie town Tsushima Nakaoki	West/North/West	30 km	March 17	30.9	0.0054	37.9
34	Futaba county Namie town Tsushima Taikougi	West/North/West	30 km	March 19	15.2	0.0027	18.8
n5	Futaba county Namie town Hirusone Kurabeishi	North/West	22 km	April 27	176.3	0.0318	218.0
n11	Futaba county Namie town Hirusone	North/West	20 km	May 2	113.9	0.0176	136.9
n2	Futaba county Namie town Akougi Kutsukubo	North/West	28 km	April 27	95.3	0.0183	119.2
n1	Futaba county Namie town Akougi Teshichiro	North/West	31 km	April 27	95.9	0.0166	117.6
n4	Futaba county Namie town Akougi Shiobite	North/West	26 km	April 27	89.5	0.0177	112.7
n7	Futaba county Namie town Minamitsushima Shimohiyada	North/West	23 km	April 27	91.7	0.0156	112.1
n6	Futaba county Namie town Minamitsushima Shimohiyada	North/West	25 km	April 27	77.0	0.0151	96.7
n8	Futaba county Namie town Shimotsushima Kotsuka	West/North/West	27 km	April 27	63.7	0.0107	77.8
n3	Futaba county Namie town Akougi Shiraoi	North/West	28 km	April 27	56.6	0.0097	69.3
n9	Futaba county Namie town Shimotsushima aza Kayabuka	West/North/West	29 km	April 27	42.4	0.0074	52.0
n10	Futaba county Namie town Hatsuke Tatenosawa	West/North/West	33 km	April 27	9.2	0.0017	11.4
ms6	Minamisoma city Haramachi ward Baba aza Godaisan	North/West	21 km	April 26	52.2	0.0095	64.6
ms4	Minamisoma city Haramachi ward Takanokura aza Mori	North/North/West	27 km	April 26	21.4	0.0037	26.3

## Estimated Integrated Dose at Each Monitoring Location based on Measured Values

Location Number	Location (Monitoring Area) [*1]	From TEPCO Fukushima Dai-ichi NPP		Date on which air dose monitoring was commenced	Estimates of Integrated Dose [*2][*3][*4]	Latest Readings (Average) [*5]	Estimates of Integrated Dose as of March 11, 2012 (mSv) [*6]
		Direction	Distance		(mSv)	(mSv/h)	
(2) Other zones							
115	Iwaki city Kawamae town Shimookeuri Ogi	South/West	28 km	May 30	13.7	0.0019	16.2
114	Iwaki city Ogawa town Kamiogawa	South/West	26 km	March 20	5.1	0.0010	6.5
73	Iwaki city Yotsukura town	South	35 km	March 20	2.1	0.0004	2.6
72	Iwaki city Hisanohama town Hisanohama aza Kitaaramaki	South	31 km	March 20	1.9	0.0003	2.3
44	Iwaki city Ohisa town Ohisa Yanomezawa	South/South/West	28 km	March 17	2.0	0.0002	2.2
38	Iwaki city Yotsukura town Shiraiwa Hokita	South/South/West	34 km	March 31	1.8	0.0003	2.2
106	Iwaki city Kawamae town Ojiroi aza Syokangoya	West/South/West	32 km	April 7	1.2	0.0002	1.4
74	Iwaki city Ogawa town Takahagi	South/South/West	36 km	March 20	1.1	0.0002	1.3
84	Iwaki city Miwa-town Saiso	South/West	39 km	March 26	0.8	0.0002	1.1
75	Iwaki city Uchigoumiyamaya town	South/South/West	43 km	March 20	0.8	0.0002	1.0
174	Iwaki city Ogawa town Takahagi	South/South/West	36 km	May 23	0.3	0.0000	0.3
86	Koriyama city Ootsuki town Choemonbayashi	West	63 km	March 27	3.7	0.0008	4.8
ko3	Koriyama city Toyota town	West	59 km	April 3	7.7	0.0014	9.6
ko1	Koriyama city Tsurumidan	West	59 km	April 25	6.3	0.0009	7.5
ko2	Koriyama city Saikon	West	59 km	April 25	5.7	0.0009	7.0
39	Soma city Yamakami Kaminamiki	North/North/West	41 km	April 1	2.3	0.0004	2.9
5	Soma city Nakanoteramae	North/North/West	42 km	March 17	1.8	0.0003	2.3
78	Date county Kawamata town Tsurusawa	North/West	48 km	March 20	3.5	0.0012	5.1
4	Date county Kawamata town oaza Tsurusawa aza Kawabata	North/West	47 km	March 17	3.9	0.0007	4.8
kw1	Date county Kawamata town Kotsunagi Ushirozawa	North/West	42 km	April 26	5.9	0.0009	7.1
kw2	Date county Kawamata town Kotsunagi Kamihagane	North/West	42 km	April 26	5.4	0.0008	6.3
37	Date city Ryozen town Ishida Hojizawa	North/West	48 km	March 31	14.7	0.0029	18.5
3	Date city Ryozen town Ishida Hikohei	North/West	46 km	March 17	9.5	0.0019	11.9
102	Date city Tsukidate town	North/West	51 km	April 7	4.7	0.0008	5.8
101	Date city Ryozen town Oishi aza Minowa	North/West	55 km	April 7	2.7	0.0002	3.0
d4	Date city Ryozen town Kamioguni Chabatake	North/West	55 km	April 27	14.8	0.0025	18.1
d2	Date city Ryozen town Shimooguni Takayashiki	North/West	55 km	April 27	13.2	0.0024	16.3
d5	Date city Ryozen town Ishida Hojizawa	North/West	48 km	April 27	11.3	0.0019	13.9
d3	Date city Ryozen town Kamioguni Matsusaka	North/West	55 km	April 27	11.1	0.0020	13.6
d14	Date city Ryozen town Kamioguni Chabatake	North/West	55 km	September 15	9.2	0.0015	11.1
177	Futaba county Kawauchi village Shimokawauchi	South/West	25 km	May 23	4.5	0.0008	5.5
87	Futaba county Kawauchi village Kamikawauchi Hananouchi	West/South/West	29 km	March 27	3.1	0.0006	3.8
111	Futaba county Kawauchi village Kamikawauchi	West/South/West	28 km	May 18	2.9	0.0004	3.5
181	Futaba county Kawauchi village Kamikawauchi	West/South/West	25 km	May 20	2.4	0.0004	2.9
43	Futaba county Kawauchi village Shimokawauchi Miyawata	West/South/West	22 km	March 16	1.8	0.0003	2.2
76	Futaba county Kawauchi village Kamikawauchi Hayawata	West/South/West	22 km	March 20	1.6	0.0001	1.8
45	Futaba county Naraha town Yamadaoka Utsukushimori	South	20 km	March 17	2.9	0.0004	3.4

## Estimated Integrated Dose at Each Monitoring Location based on Measured Values

Location Number	Location (Motiroring Area) [*1]	From TEPCO Fukushima Dai-ichi NPP		Date on which air dose monitoring was commenced	Estimates of Integrated Dose [*2][*3][*4]	Latest Readings (Average) [*5]	Estimates of Integrated Dose as of March 11, 2012 (mSv) [*6]
		Direction	Distance		(mSv)	(mSv/h)	
112	Futaba county Hirono town Kamiyamigawa	South/South/West	24 km	May 18	2.8	0.0005	3.5
71	Futaba county Hirono town Shimokitaba Nawashirogae	South	23 km	March 20	2.3	0.0003	2.7
51	Tamura county Ono town Ononiimachi Tatemawari	West/South/West	39 km	March 17	0.8	0.0001	0.9
113	Tamura city Miyakoji town Furumichi Iwaisawa	West	25 km	May 20	6.0	0.0009	7.2
110	Tamura city Miyakoji town Furumichi	West	25 km	May 18	4.7	0.0006	5.5
42	Tamura city Tokiwa town Yamane Tomioka	West	33 km	March 17	3.2	0.0006	4.0
15	Tamura city Tokiwa town Yamane Kashima	West	32 km	March 17	2.9	0.0004	3.3
41	Tamura city Miyakoji town Furumichi	West	21 km	March 17	2.5	0.0004	3.1
23	Tamura city Funehiki town Minamiutsushi Suicyuuchi	West/North/West	37 km	March 17	2.4	0.0004	3.0
20	Tamura city Funehiki town Niitate shimo	West	41 km	March 17	2.0	0.0004	2.5
22	Tamura city Huneiki town Kamiutsushi aza Ushirota	West/North/West	35 km	March 17	1.5	0.0003	1.8
105	Tamura city Miyakoji town Furumichi aza Teranomae	West	21 km	April 7	1.4	0.0002	1.8
12	Tamura city Funehiki town Funehiki aza Ozawakawashiro	West	39 km	March 17	1.2	0.0002	1.5
13	Tamura city Tokiwa town Nishimuki Yakata	West	37 km	March 17	1.2	0.0002	1.4
14	Tamura city Tokiwa town Tokiwa Uchimachi	West	34 km	March 17	1.1	0.0002	1.3
52	Tamura city Funehiki town funehiki Babakawara	West	41 km	March 17	1.0	0.0002	1.2
11	Nihonmatsu city Ota aza Shimoda	West/North/West	43 km	March 17	4.4	0.0005	5.1
35	Nihonmatsu city Tazawahagidaira	West/North/West	37 km	March 19	3.6	0.0008	4.6
10	Nihonmatsu city Harimichi Nakajima	West/North/West	44 km	March 17	2.9	0.0004	3.5
ni1	Nihonmatsu city Kamikawasaki Itouchi	West/North/West	51 km	April 25	5.5	0.0008	6.6
ni2	Nihonmatsu city Tazawa Shimomagariyama	West/North/West	36 km	April 26	3.9	0.0006	4.7
2	Fukushima city Onami Takinoiri	North/West	56 km	March 17	7.7	0.0011	9.1
88	Fukushima city Higarigaoka	West/North/West	58 km	April 3	4.3	0.0003	4.8
1	Fukushima city Sugitsuma town	North/West	62 km	March 16	3.1	0.0005	3.8
85	Fukushima city Arai Harajiku	West/North/West	66 km	March 27	1.7	0.0005	2.3
d11	Fukushima city Higashihama town	North/West	61 km	April 27	8.1	0.0016	10.1
d13	Fukushima city Nankodai	North/West	59 km	April 27	7.9	0.0011	9.3
d6	Fukushima city Koganeyama	North/West	62 km	April 27	7.0	0.0012	8.5
d1	Fukushima city Minamiyanome Michishita	North/West	66 km	April 27	6.8	0.0012	8.3
d8	Fukushima city Miyashita town	North/West	63 km	April 27	5.4	0.0013	7.1
d12	Fukushima city Watari	North/West	61 km	April 27	5.1	0.0005	5.8
d7	Fukushima city Sankyoue	North/West	63 km	April 27	4.1	0.0005	4.8
d10	Fukushima city Kamihama town	North/West	61 km	April 27	4.1	0.0005	4.7
d9	Fukushima city Shinhama town	North/West	62 km	April 27	3.2	0.0004	3.7
108	Minamisoma city Haramachi ward Ohara Daihata	North/North/West	29 km	April 7	10.8	0.0019	13.2
107	Minamisoma city Haramachi ward Baba Shimonakanouchi	North/North/West	23 km	April 7	7.4	0.0007	8.3
6	Minamisoma city Kashima ward Nishimachi	North	32 km	March 17	3.4	0.0007	4.3
7	Minamisoma city Kashima ward Terauchi Motoyashiki	North	32 km	March 17	2.5	0.0005	3.1
103	Minamisoma city Haramachi ward Taka Mamegarauchi	North	21 km	April 7	2.0	0.0003	2.4
80	Minamisoma city Haramachi ward Takami town	North	24 km	March 20	1.6	0.0003	2.0

## Estimated Integrated Dose at Each Monitoring Location based on Measured Values

Location Number	Location (Motiroring Area) [*1]	From TEPCO Fukushima Dai-ichi NPP		Date on which air dose monitoring was commenced	Estimates of Integrated Dose [*2][*3][*4]	Latest Readings (Average) [*5]	Estimates of Integrated Dose as of March 11, 2012 (mSv) [*6]
		Direction	Distance		(mSv)	(mSv/h)	
ms1	Minamisoma city Haramachi ward Ohara aza Hebiishi	North/North/West	33 km	April 26	16.7	0.0032	20.9
ms5	Minamisoma city Haramachi ward Takakura aza Domae	North/North/West	26 km	April 26	13.2	0.0020	15.9
ms11	Minamisoma city Haramachi ward Ohara aza Daihata	North/North/West	29 km	April 26	9.8	0.0014	11.6
ms2	Minamisoma city Kashima ward Jisabara aza Kamahai	North/North/West	32 km	April 26	7.9	0.0014	9.8
ms3	Minamisoma city Kashima ward Kamitochikubo aza Kanodai	North/North/West	37 km	April 26	5.5	0.0011	7.0
ms7	Minamisoma city Haramachi ward Baba aza Nakouchi	North/North/West	23 km	April 26	5.0	0.0006	5.8
ms9	Minamisoma city Haramachi ward Takami town	North	24 km	April 26	1.6	0.0003	2.0
ms10	Minamisoma city Haramachi ward taka aza Mamegarauchi	North	21 km	April 26	1.3	0.0003	1.7
ms8	Minamisoma city Haramachi ward Kanezawa aza Oiai	North	28 km	April 26	1.2	0.0003	1.5
mo1	Motomiya city Wada	West/North/West	52 km	April 25	9.5	0.0013	11.2
(3) The emergency evacuation preparation areas							
31	Tamura city Miyakoji town Furumichi	West/South/West	18 km	May 6	5.9	0.0011	7.3
24	Tamura city Miyakoji town Furumichi	West	17 km	May 6	5.1	0.0009	6.3
37	Futaba county Okuma town Koirino	West/South/West	3.0 km	May 6	397.3	0.0665	484.5
29	Futaba county Okuma town oaza Ottozawa	West	2.4 km	May 6	308.3	0.0541	379.1
47	Futaba county Okuma town oaza Kumagawa	South/South/West	3.7 km	May 6	180.4	0.0302	220.1
36	Futaba county Okuma town Shimonogami	West/South/West	4.8 km	May 6	156.6	0.0260	190.7
30	Futaba county Okuma town oaza Ottozawa	West	2.6 km	May 6	134.1	0.0231	164.4
23	Futaba county Okuma town oaza Ottozawa	West/North/West	2.3 km	May 6	113.7	0.0180	137.3
50	Futaba county Okuma town oaza Kumagawa	South	4.0 km	May 6	99.8	0.0169	121.9
35	Futaba county Okuma town oaza Nogami	West/South/West	6.6 km	May 6	76.7	0.0121	92.5
38	Futaba county Okuma town Koirino	West/South/West	3.4 km	May 6	63.1	0.0084	74.1
26	Futaba county Okuma town oaza Nogami	West	11 km	May 6	18.4	0.0033	22.7
34	Futaba county Okuma town Ogawara	West/South/West	7.5 km	May 6	18.4	0.0032	22.6
25	Futaba county Okuma town oaza Nogami	West	14 km	May 6	15.9	0.0027	19.4
32	Futaba county Kawauchi village Shimokawauchi	West/South/West	20 km	May 6	8.8	0.0014	10.6
33	Futaba county Kawauchi village Shimokawauchi	West/South/West	15 km	May 6	6.0	0.0012	7.6
46	Futaba county Tomioka town oaza Oragahama	South/South/West	5.6 km	May 6	91.5	0.0149	111.0
45	Futaba county Tomioka town oaza Motooka	South/South/West	7.1 km	May 6	60.4	0.0100	73.6
42	Futaba county Tomioka town oaza Kamiteoka	South/West	7.9 km	May 6	39.2	0.0067	48.1
39	Futaba county Tomioka town oaza Kamiteoka	South/West	13 km	May 6	29.4	0.0046	35.4
49	Futaba county Tomioka town oaza Kobama	South	9.4 km	May 6	22.1	0.0040	27.3
54	Futaba county Tomioka town oaza Kamiteoka	South/West	11 km	October 4	18.5	0.0032	22.6
43	Futaba county Tomioka town oaza Kamikoriyama	South/South/West	13 km	May 6	16.6	0.0022	19.6
40	Futaba county Tomioka town oaza Kamiteoka	West/South/West	9.8 km	May 6	10.5	0.0016	12.6



## Estimated Integrated Dose at Each Monitoring Location based on Measured Values

Location Number	Location (Motiroring Area) [*1]	From TEPCO Fukushima Dai-ichi NPP		Date on which air dose monitoring was commenced	Estimates of Integrated Dose	Latest Readings (Average) [*5]	Estimates of Integrated Dose as of March 11, 2012 (mSv) [*6]
		Direction	Distance		[*2][*3][*4] (mSv)	(mSv/h)	
55	Futaba county Namie town oaza Ide	West/North/West	10 km	October 25	170.5	0.0296	209.3
19	Futaba county Namie town Kawabusa	North/West	19 km	May 6	172.0	0.0282	208.9
53	Futaba county Namie town oaza Ide	West/North/West	11 km	October 4	123.9	0.0210	151.3
14	Futaba county Namie town Hirusone	North/West	20 km	May 6	111.4	0.0260	145.4
21	Futaba county Namie town oaza Ide	West/North/West	9.1 km	May 6	116.2	0.0196	141.9
20	Futaba county Namie town oaza Omaru	West/North/West	12 km	May 6	111.4	0.0193	136.6
15	Futaba county Namie town Murohara	North/West	16 km	May 6	103.4	0.0202	129.9
17	Futaba county Namie town oaza Suemori	North/West	11 km	May 6	50.1	0.0093	62.2
9	Futaba county Namie town Sakai	North/North/West	7.3 km	May 6	46.0	0.0084	56.9
13	Futaba county Namie town oaza Tatsuno	North/West	14 km	May 6	35.1	0.0074	44.7
16	Futaba county Namie town oaza Tatsuno	North/North/West	11 km	May 6	28.6	0.0046	34.6
2	Futaba county Namie town oaza Kitakiyohashi	North	8.0 km	May 6	3.2	0.0006	4.0
44	Futaba county Naraha town Kamishigeoka	South/South/West	14 km	May 6	11.8	0.0017	14.1
41	Futaba county Naraha town oaza Ide	South/West	15 km	May 6	9.9	0.0014	11.8
52	Futaba county Naraha town oaza Kamikobana	South/South/West	18 km	September 14	4.6	0.0009	5.8
48	Futaba county Naraha town oaza Ide	South	16 km	May 6	3.9	0.0007	4.8
8	Futaba county Futaba town oaza Nagatsuka	North/North/West	4.8 km	May 6	133.1	0.0232	163.5
27	Futaba county Futaba town Ishikuma	West/North/West	7.3 km	May 6	94.0	0.0167	115.8
28	Futaba county Futaba town oaza Yamada	West	7.1 km	May 6	51.3	0.0094	63.6
10	Futaba county Futaba town oaza Nagatsuka	North/North/West	4.1 km	May 6	50.8	0.0061	58.9
22	Futaba county Futaba town oaza Maeta	West/North/West	3.6 km	May 6	42.5	0.0076	52.4
18	Futaba county Futaba town Terasawa	North/West	7.0 km	May 6	33.4	0.0062	41.5
11	Futaba county Futaba town oaza Shinzan	North/West	3.5 km	May 6	22.7	0.0037	27.5
12	Minamisoma city Odaka ward Kanaya	North/West	18 km	May 6	43.2	0.0074	52.9
51	Minamisoma city Odaka ward Kawabusa	North/West	16 km	September 6	24.7	0.0053	31.6
6	Minamisoma city Odaka ward Otomi	North/North/West	19 km	May 6	9.6	0.0020	12.3
7	Minamisoma city Odaka ward Kamiyama	North/North/West	13 km	May 6	9.7	0.0018	12.1
3	Minamisoma city Odaka ward Katakusa	North/North/West	18 km	May 6	5.2	0.0009	6.4
4	Minamisoma city Odaka ward Izumisawa	North/North/West	14 km	May 6	3.3	0.0006	4.1
1	Minamisoma city Odaka ward Oi	North	16 km	May 6	2.9	0.0006	3.7
5	Minamisoma city Odaka ward Namedu	North/North/West	11 km	May 6	2.7	0.0005	3.4

This table was jointly compiled by the Nuclear Safety Commission, MEXT, and the Nuclear and Industrial Safety Agency.

\*1: Information on the latitude and longitude of each monitoring spot is available on the MEXT website.

\*2: Shown values are integrated values monitored from 6:00, March 12 through 24:00, December 11. The same estimation method as that used by the Nuclear Safety Commission on March 26, 2011 is used, whereby the values are estimated by multiplying the monitored values by 0.6 in consideration of the reduction effect of wooden buildings (0.4) when staying outdoors for eight hours and indoors for 16 hours.

\*3: For locations where the monitoring started on or after March 19, the dose data for the period from March 17 to the day before the start of monitoring has been derived by assuming that the dose has changed in proportion to changes at Location No. 32, where the steepest dose change was observed.

\*4: For the period where actual values monitored by a simple integrating dosimeter are available, such values are indicated.

\*5: Regarding the average of the estimates from October 9 to October 11: The average of the estimates from December 9 to December 11. Where no measurement results are available for the period from December 9 to December 11, average last measurement date are proportional to the air doses measured at point 32. As for locations where actual values have been obtained by a simple integrating dosimeter, this is the average (from December 9 to December 11) of the integrated values monitored since the time of the previous data sampling divided by the time lapsed.

\*6: Shown values have been obtained while supposing that the latest monitored values (the average) [\*5] will stay unchanged on and after December 12.

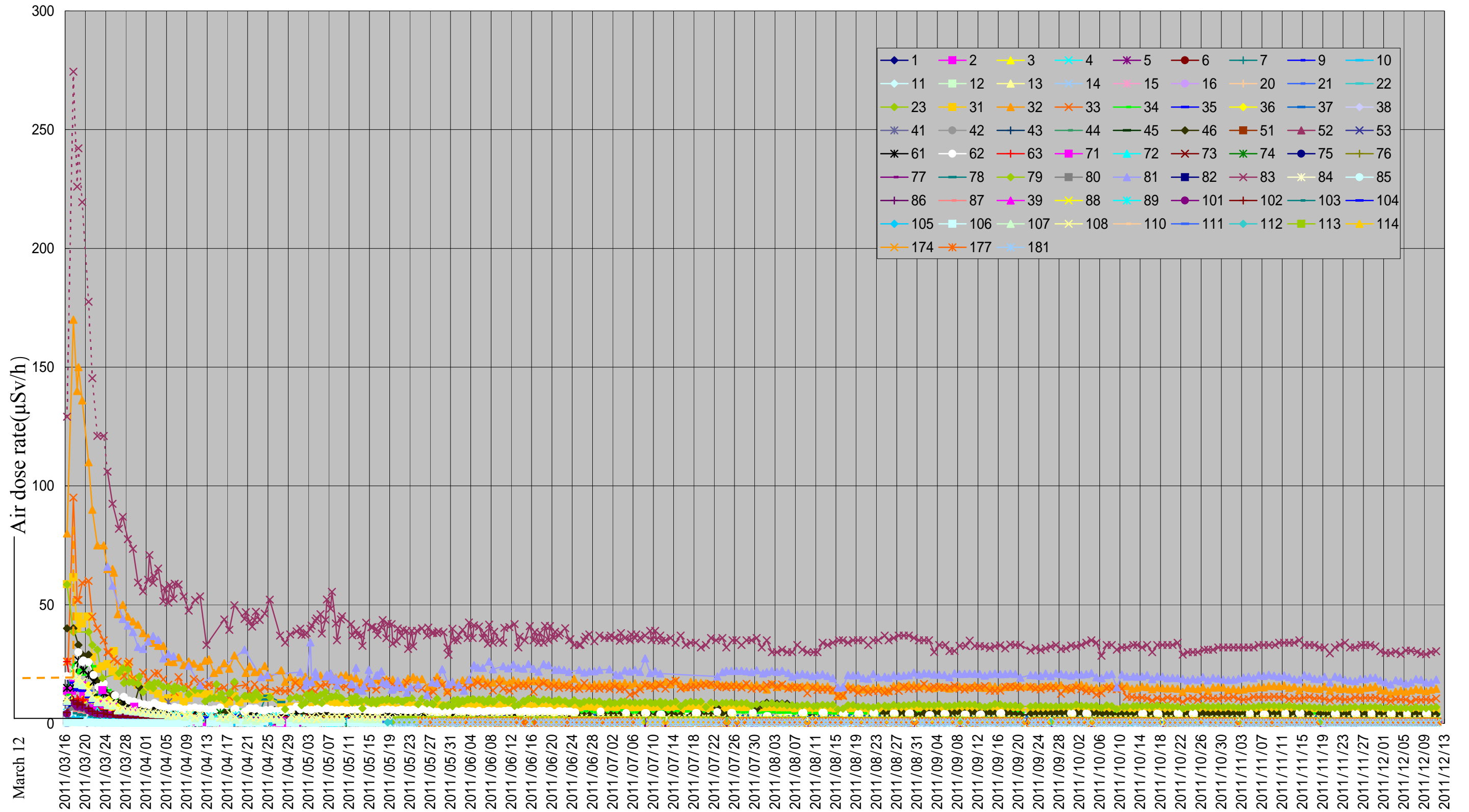
\*7: Point 1 in "Other areas" shows values measured on the second floor of the Fukushima prefectural government office (outdoor)

In the isogram map of estimated integrated doses, the values for a total of 8,422 air dose monitoring locations were used (the 216 locations mentioned above plus the 8,206 locations below).

- 1) Air dose rates observed in the emergency environmental monitoring conducted by Fukushima Prefecture from March 30 to November 11: 97 locations
- 2) Air dose rates observed in monitoring conducted by MEXT on April 9 in Katsurao village and Namie town: 16 locations
- 3) Air dose rates observed in monitoring conducted by MEXT on April 12 and April 14 in Iitate village, Iwaki city, Katsurao village, Kawauchi village, Tamura city, Namie town, Hirono town, and Minamisoma city, in monitoring conducted by MEXT on June 5, 6, 10, 13, 14 and 24 in Date city, Minamisoma city, Iwaki city, and Kawauchi village, and in monitoring conducted by MEXT on April 26, May 12, 20 and 25 in Kawamata town: 411 locations
- 4) Air dose rates observed within the area covered by the isogram map in the grid survey conducted by Fukushima Prefecture from April 12 to April 16: 1,788 locations
- 5) Air dose rates observed within the area covered by the isogram map in the environmental radioactivity monitoring conducted by Fukushima Prefecture (municipalities and 7 regions in Fukushima and areas within 20 to 50 km): 65 locations
- 6) Air dose rates observed inside the 20 km zone in monitoring conducted by MEXT and TEPCO: 178 locations
- 7) Air dose rates continuously monitored from April 12 at monitoring posts 1 to 8 near the border of the site of Fukushima Dai-ichi NPP: 8 locations
- 8) Air dose rates of distribution map of radiation dose released by MEXT on August 2: 1511 locations
- 9) Readings of Radiation Monitoring under the Action Plan toward the Removal of the Designation of Emergency Evacuation Preparation Areas (Detailed) released by MEXT and Team in Charge of Assisting the Lives of Disaster Victims on August 16: 1437 locations
- 10) Readings of the Wide-area Monitoring in Restricted Areas and Planned Evacuation Zones released by Team in Charge of Assisting the Lives of Disaster Victims and MEXT on September 1: 2,695 locations



# Changes in Air Dose Rate Readings



Notes: In cases where more than one reading was taken during the six-hour period, the maximum value is plotted.  
The dotted lines show estimates assumed as being proportional to the values at location 32, not measured values.

Monitoring Date