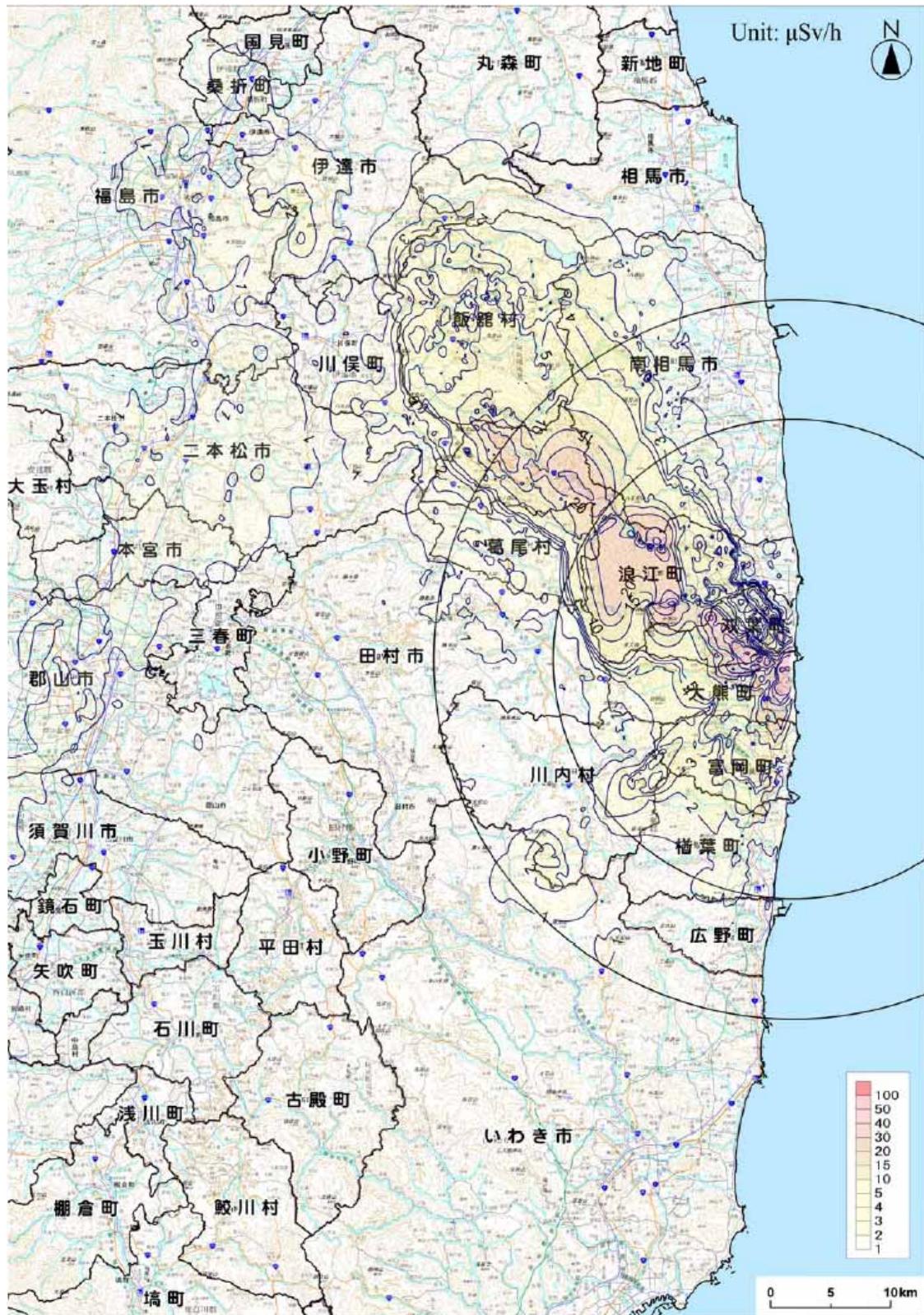


# Dose Monitoring Map

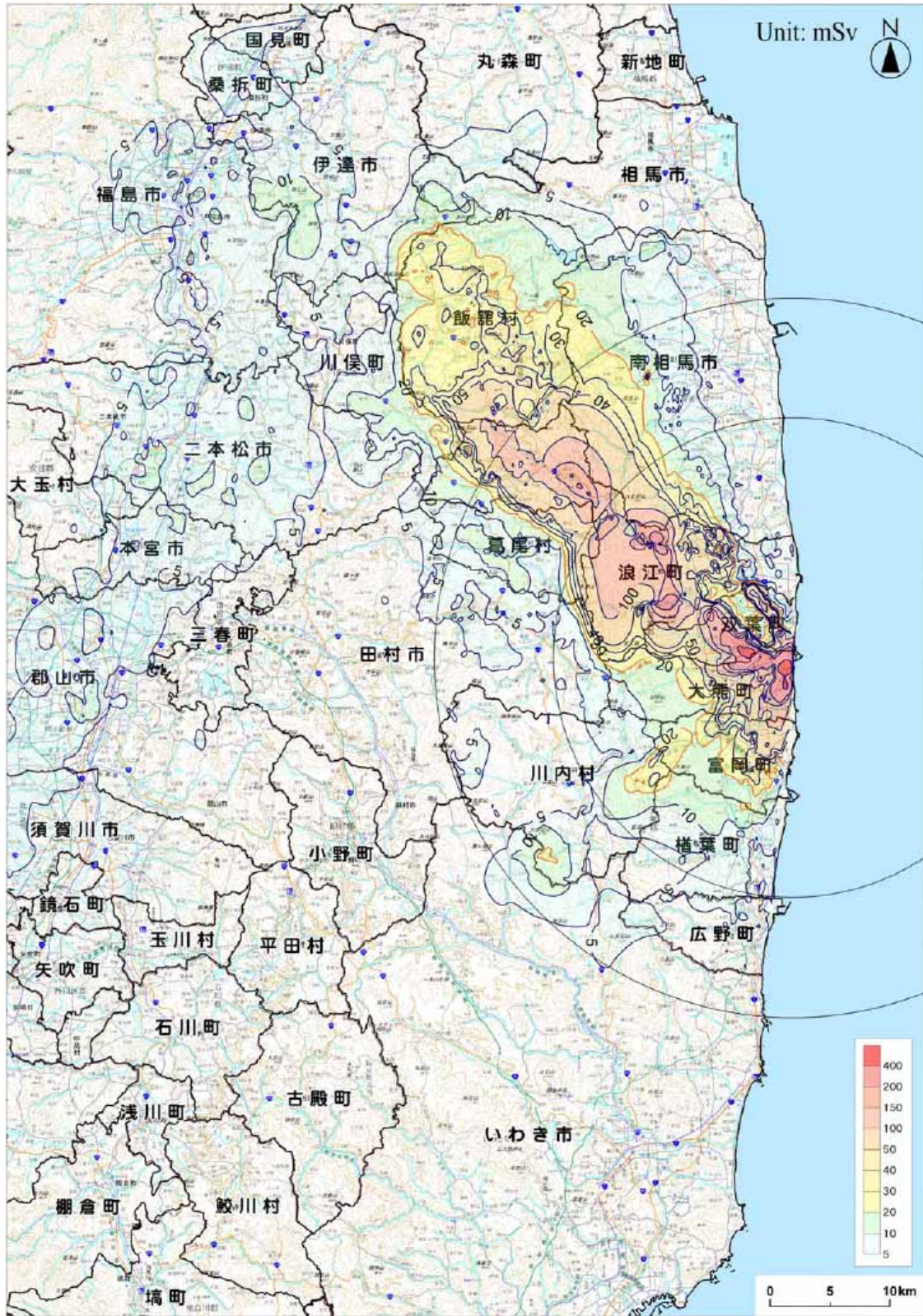
(As of October 11, 2011)





# Integrated Dose Estimation Map

(Integrated Dose up to March 11, 2012)



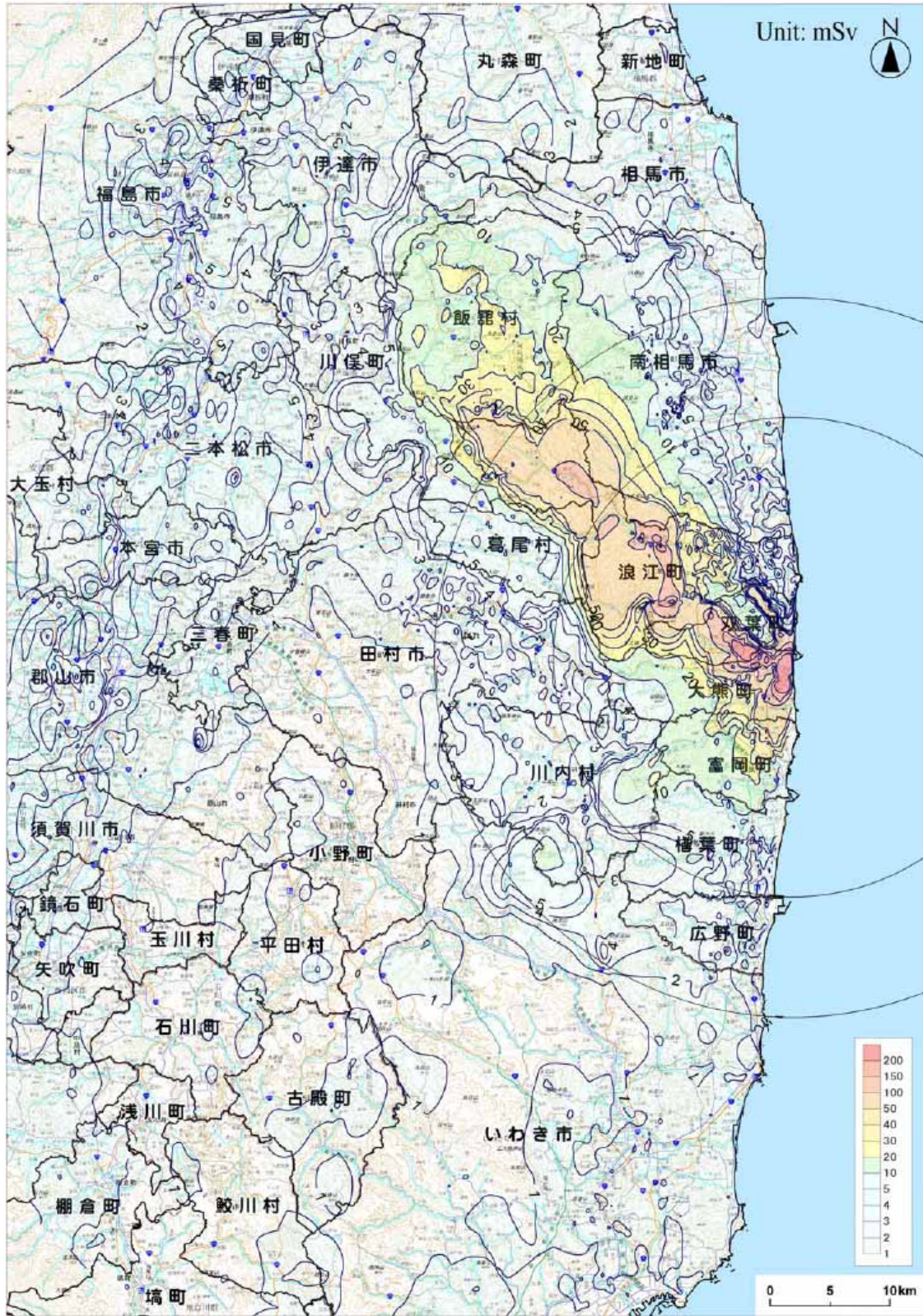
Using monitored values up to 24:00 on October 11, 2011

Background image: Denshi Kokudo



# Integrated Dose Estimation Map

(Integrated Dose up to October 11, 2011)



Using monitored values up to 24:00 on October 11, 2011

Background image: Denshi Kokudo

## Estimated Integrated Dose at Each Monitoring Location based on Measured Values

Location Number	Location (Monitoring Area) [*1]	From TEPCO Fukushima Dai-ichi NPP		Date on which air dose monitoring was commenced	Estimates of Integrated Dose [*2][*3][*4]	Latest Readings (Average) [*5]	Estimates of Integrated Dose as of March 11, 2012 (mSv) [*6]
		Direction	Distance		(mSv)	(mSv/h)	
(1) Planned evacuation zones							
33	Soma county Iitate village Nagadoro	North/West	33km	March 16	33.1	0.0071	48.5
62	Soma county Iitate village Kusano Taishido	North/West	39km	March 17	17.2	0.0039	25.8
61	Soma county Iitate village Yagisawa	North/West	36km	March 17	13.4	0.0030	20.1
63	Soma county Iitate village Nimaibashi	North/West	44km	March 17	5.2	0.0010	7.3
i27	Soma county Iitate village Nagadoro	North/West	33km	April 26	59.6	0.0167	96.1
i28	Soma county Iitate village Hiso	North/West	34km	April 26	58.7	0.0115	83.9
i26	Soma county Iitate village Nagadoro	North/West	31km	April 26	40.6	0.0091	60.6
i24	Soma county Iitate village Komiya Kariyaniwa	North/West	32km	April 26	34.2	0.0068	49.0
i4	Soma county Iitate village Fukaya	North/West	41km	April 25	32.8	0.0072	48.6
i25	Soma county Iitate village Warabidaira	North/West	29km	April 26	32.6	0.0069	47.7
i22	Soma county Iitate village Komiya	North/West	35km	April 26	27.7	0.0064	41.6
i19	Soma county Iitate village Sekisawa	North/West	38km	April 26	24.4	0.0052	35.7
i13	Soma county Iitate village Maeta	North/West	43km	April 25	25.1	0.0048	35.7
i20	Soma county Iitate village Sekisawa Hashiba	North/West	36km	April 26	23.3	0.0053	34.9
i29	Soma county Iitate village Hiso	North/West	38km	April 26	23.3	0.0050	34.3
i23	Soma county Iitate village Komiya	North/West	36km	April 26	22.7	0.0048	33.2
i21	Soma county Iitate village Komiya Nodegami	North/West	33km	April 26	21.6	0.0049	32.3
i6	Soma county Iitate village Fukaya	North/West	41km	April 25	22.5	0.0041	31.5
i31	Soma county Iitate village Itoi aza Machi	North/West	38km	April 26	18.9	0.0048	29.3
i9	Soma county Iitate village Maeta	North/West	45km	April 25	19.9	0.0040	28.7
i14	Soma county Iitate village Kusano	North/West	40km	April 25	19.4	0.0038	27.7
i10	Soma county Iitate village Sasu	North/West	46km	April 25	19.2	0.0037	27.3
i7	Soma county Iitate village Usuishii	North/West	42km	April 25	17.9	0.0041	26.9
i2	Soma county Iitate village Itamizawa	North/West	39km	April 25	17.5	0.0038	25.8
i32	Soma county Iitate village Itoi	North/West	37km	April 26	16.3	0.0038	24.6
i5	Soma county Iitate village Fukaya	North/West	40km	April 25	16.9	0.0033	24.2
i3	Soma county Iitate village Kusano	North/West	39km	April 25	16.8	0.0033	23.9
i1	Soma county Iitate village Itamizawa	North/West	39km	April 25	15.6	0.0035	23.2
i11	Soma county Iitate village Sasu	North/West	46km	April 25	15.9	0.0033	23.2
i18	Soma county Iitate village Yagisawa	North/West	36km	April 25	14.9	0.0036	22.6
i30	Soma county Iitate village Itoi Ohi	North/West	40km	April 26	15.2	0.0027	21.1
i17	Soma county Iitate village Kusano	North/West	38km	April 25	13.9	0.0028	20.0
i15	Soma county Iitate village Ookura	North/North/West	40km	April 25	11.1	0.0024	16.3
i8	Soma county Iitate village Nimaibashi	North/West	44km	April 25	9.9	0.0023	15.0
i12	Soma county Iitate village Sasu	North/West	43km	April 25	10.5	0.0021	15.0
i16	Soma county Iitate village Ookura	North/North/West	40km	April 25	9.0	0.0022	13.9
46	Date county Kawamata town Yamakiya Mukaideyama	West/North/West	34km	March 17	15.5	0.0038	23.8
36	Date county Kawamata town Yamakiya Oonukari	West/North/West	38km	March 20	9.6	0.0020	14.0

## Estimated Integrated Dose at Each Monitoring Location based on Measured Values

Location Number	Location (Monitoring Area) [*1]	From TEPCO Fukushima Dai-ichi NPP		Date on which air dose monitoring was commenced	Estimates of Integrated Dose [*2][*3][*4]	Latest Readings (Average) [*5]	Estimates of Integrated Dose as of March 11, 2012 (mSv) [*6]
		Direction	Distance		(mSv)	(mSv/h)	
kw6	Date county Kawamata town Yamakiya Hirokuboyama	West/North/West	33km	April 26	30.7	0.0072	46.6
kw4	Date county Kawamata town Yamakiya Boyoshi	West/North/West	37km	April 26	10.1	0.0021	14.6
kw5	Date county Kawamata town Yamakiya Ishotatsuyama	West/North/West	34km	April 26	7.0	0.0017	10.8
kw3	Date county Kawamata town Yamakiya Shimonagahashi	West/North/West	40km	April 26	6.9	0.0015	10.1
21	Futaba county Katsurao village Kaminogawa	West/North/West	31km	March 17	9.0	0.0023	14.0
104	Futaba county Katsurao village oaza Ochiai aza Ochiai	West/North/West	25km	April 7	5.7	0.0010	7.9
K8	Futaba county Katsurao village Katsurao Noyuki	West/North/West	21km	April 25	70.9	0.0150	103.8
K7	Futaba county Katsurao village Katsurao Kashiwabara	West/North/West	23km	April 25	39.2	0.0098	60.7
K6	Futaba county Katsurao village Katsurao Hiroyaji	West/North/West	26km	April 25	35.1	0.0077	52.0
K9	Futaba county Katsurao village Ochiai Ozasa	West/North/West	21km	April 25	11.4	0.0023	16.6
K4	Futaba county Katsurao village Nogawa Nakanouchi	West/North/West	28km	April 25	9.2	0.0017	13.0
K11	Futaba county Katsurao village Ochiai Ohanachi	West/North/West	21km	April 25	7.7	0.0018	11.7
K1	Futaba county Katsurao village Katsurao Kazakoshi	West/North/West	32km	April 25	7.4	0.0014	10.6
K2	Futaba county Katsurao village Katsurao Nakadaira	West/North/West	30km	April 25	7.0	0.0015	10.4
K3	Futaba county Katsurao village Katsurao Higashidaira	West/North/West	28km	April 25	6.5	0.0015	9.8
K10	Futaba county Katsurao village Ochiai Ozasa	West/North/West	24km	April 25	5.7	0.0014	8.8
K5	Futaba county Katsurao village Nogawa Yuden	West/North/West	29km	April 25	5.8	0.0010	8.1
83	Futaba county Namie town Akougi Kunugidaira	North/West	24km	March 24	137.1	0.0317	206.4
81	Futaba county Namie town Akougi Ishikoya	North/West	30km	March 24	78.9	0.0185	119.4
32	Futaba county Namie town Akougi Teshichiro	North/West	31km	March 16	60.6	0.0134	90.0
79	Futaba county Namie town Shimotsushima Kayabuka	West/North/West	29km	March 16	28.2	0.0064	42.1
31	Futaba county Namie town Tsushima Nakaoki	West/North/West	30km	March 17	26.1	0.0057	38.5
34	Futaba county Namie town Tsushima Taikougi	West/North/West	30km	March 19	12.9	0.0028	18.9
n5	Futaba county Namie town Hirusone Kurabeishi	North/West	22km	April 27	146.4	0.0046	222.1
n11	Futaba county Namie town Hirusone	North/West	20km	May 2	97.4	0.0190	138.9
n1	Futaba county Namie town Akougi Teshichiro	North/West	31km	April 27	81.0	0.0187	121.9
n7	Futaba county Namie town Minamitsushima Shimohiyada	North/West	23km	April 27	77.3	0.0170	114.5
n4	Futaba county Namie town Akougi Shiobite	North/West	26km	April 27	73.8	0.0183	113.8
n2	Futaba county Namie town Akougi Kutsukubo	North/West	28km	April 27	79.4	0.0154	113.1
n6	Futaba county Namie town Minamitsushima Shimohiyada	North/West	25km	April 27	63.7	0.0156	97.8
n8	Futaba county Namie town Shimotsushima Kotsuka	West/North/West	27km	April 27	53.4	0.0119	79.5
n3	Futaba county Namie town Akougi Shiraoi	North/West	28km	April 27	48.1	0.0085	66.7
n9	Futaba county Namie town Shimotsushima aza Kayabuka	West/North/West	29km	April 27	35.6	0.0081	53.4
n10	Futaba county Namie town Hatsuke Tatenosawa	West/North/West	33km	April 27	7.7	0.0017	11.4
ms6	Minamisoma city Haramachi ward Baba aza Godaisan	North/West	21km	April 26	43.9	0.0099	65.6
ms4	Minamisoma city Haramachi ward Takanokura aza Mori	North/North/West	27km	April 26	18.4	0.0036	26.1



## Estimated Integrated Dose at Each Monitoring Location based on Measured Values

Location Number	Location (Monitoring Area) [*1]	From TEPCO Fukushima Dai-ichi NPP		Date on which air dose monitoring was commenced	Estimates of Integrated Dose [*2][*3][*4]	Latest Readings (Average) [*5]	Estimates of Integrated Dose as of March 11, 2012 (mSv) [*6]
		Direction	Distance		(mSv)	(mSv/h)	
(2) Other zones							
115	Iwaki city Kawamae town Shimookeuri Ogi	South/West	28km	May 30	11.9	0.0023	16.8
114	Iwaki city Ogawa town Kamiogawa	South/West	26km	March 20	4.2	0.0012	6.8
73	Iwaki city Yotsukura town	South	35km	March 20	1.7	0.0004	2.6
72	Iwaki city Hisanohama town Hisanohama aza Kitaaramaki	South	31km	March 20	1.6	0.0003	2.3
44	Iwaki city Ohisa town Ohisa Yanomezawa	South/South/West	28km	March 17	1.8	0.0002	2.3
38	Iwaki city Yotsukura town Shiraiwa Hokita	South/South/West	34km	March 31	1.5	0.0003	1.1
106	Iwaki city Kawamae town Ojiroi aza Syokangoya	West/South/West	32km	April 7	1.0	0.0003	1.6
74	Iwaki city Ogawa town Takahagi	South/South/West	36km	March 20	1.0	0.0002	1.4
84	Iwaki city Miwa-town Saiso	South/West	39km	March 26	0.7	0.0002	1.1
75	Iwaki city Uchigoumiyamaya town	South/South/West	43km	March 20	0.7	0.0001	0.9
174	Iwaki city Ogawa town Takahagi	South/South/West	36km	May 23	0.3	0.0000	0.3
86	Koriyama city Ootsuki town Choemonbayashi	West	63km	March 27	3.1	0.0007	4.7
ko3	Koriyama city Toyota town	West	59km	April 3	6.5	0.0015	9.8
ko1	Koriyama city Tsurumidan	West	59km	April 25	5.5	0.0010	7.7
ko2	Koriyama city Saikon	West	59km	April 25	4.9	0.0010	7.1
39	Soma city Yamakami Kaminamiki	North/North/West	41km	April 1	2.0	0.0004	2.6
5	Soma city Nakanoteramae	North/North/West	42km	March 17	1.6	0.0003	2.3
4	Date county Kawamata town oaza Tsurusawa aza Kawabata	North/West	47km	March 17	3.3	0.0007	4.8
78	Date county Kawamata town Tsurusawa	North/West	48km	March 20	2.7	0.0004	3.6
kw1	Date county Kawamata town Kotsunagi Ushirozawa	North/West	42km	April 26	5.1	0.0010	7.3
kw2	Date county Kawamata town Kotsunagi Kamihagane	North/West	42km	April 26	4.7	0.0009	6.7
37	Date city Ryozen town Ishida Hojizawa	North/West	48km	March 31	12.3	0.0029	18.5
3	Date city Ryozen town Ishida Hikohei	North/West	46km	March 17	7.8	0.0020	12.2
102	Date city Tsukidate town	North/West	51km	April 7	3.9	0.0008	5.7
101	Date city Ryozen town Oishi aza Minowa	North/West	55km	April 7	2.6	0.0001	2.9
d4	Date city Ryozen town Kamioguni Chabatake	North/West	55km	April 27	12.4	0.0031	19.2
d2	Date city Ryozen town Shimooguni Takayashiki	North/West	55km	April 27	11.0	0.0027	16.8
d5	Date city Ryozen town Ishida Hojizawa	North/West	48km	April 27	9.6	0.0021	14.2
d3	Date city Ryozen town Kamioguni Matsusaka	North/West	55km	April 27	9.2	0.0022	14.1
d14	Date city Ryozen town Kamioguni Chabatake	North/West	55km	September 15	7.7	0.0018	11.7
177	Futaba county Kawauchi village Shimokawauchi	South/West	25km	May 23	3.8	0.0009	5.8
87	Futaba county Kawauchi village Kamikawauchi Hananouchi	West/South/West	29km	March 27	2.6	0.0006	3.9
111	Futaba county Kawauchi village Kamikawauchi	West/South/West	28km	May 18	2.5	0.0005	3.7
181	Futaba county Kawauchi village Kamikawauchi	West/South/West	25km	May 20	2.0	0.0005	3.0
43	Futaba county Kawauchi village Shimokawauchi Miyawata	West/South/West	22km	March 16	1.5	0.0004	2.4
76	Futaba county Kawauchi village Kamikawauchi Hayawata	West/South/West	22km	March 20	1.4	0.0003	2.0
45	Futaba county Naraha town Yamadaoka Utsukushimori	South	20km	March 17	2.5	0.0004	3.5

## Estimated Integrated Dose at Each Monitoring Location based on Measured Values

Location Number	Location (Monitoring Area) [*1]	From TEPCO Fukushima Dai-ichi NPP		Date on which air dose monitoring was commenced	Estimates of Integrated Dose [*2][*3][*4]	Latest Readings (Average) [*5]	Estimates of Integrated Dose as of March 11, 2012 (mSv) [*6]
		Direction	Distance		(mSv)	(mSv/h)	
112	Futaba county Hirono town Kamiyamigawa	South/South/West	24km	May 18	2.4	0.0005	3.5
71	Futaba county Hirono town Shimokitaba Nawashirogae	South	23km	March 20	2.0	0.0003	2.7
51	Tamura county Ono town Ononiimachi Tatemawari	West/South/West	39km	March 17	0.7	0.0001	0.9
113	Tamura city Miyakoji town Furumichi Iwaisawa	West	25km	May 20	5.2	0.0011	7.5
110	Tamura city Miyakoji town Furumichi	West	25km	May 18	4.1	0.0007	5.7
42	Tamura city Tokiwa town Yamane Tomioka	West	33km	March 17	2.6	0.0007	4.1
15	Tamura city Tokiwa town Yamane Kashima	West	32km	March 17	2.5	0.0005	3.5
41	Tamura city Miyakoji town Furumichi	West	21km	March 17	2.1	0.0005	3.1
23	Tamura city Funehiki town Minamiutsushi Suicyuuchi	West/North/West	37km	March 17	2.0	0.0005	3.0
20	Tamura city Funehiki town Niitate shimo	West	41km	March 17	1.7	0.0004	2.6
105	Tamura city Miyakoji town Furumichi aza Teranomae	West	21km	April 7	1.2	0.0003	1.9
22	Tamura city Hunehiki town Kamiutsushi aza Ushirota	West/North/West	35km	March 17	1.3	0.0003	1.9
12	Tamura city Funehiki town Funehiki aza Ozawakawashiro	West	39km	March 17	1.0	0.0003	1.6
13	Tamura city Tokiwa town Nishimuki Yakata	West	37km	March 17	1.0	0.0002	1.4
14	Tamura city Tokiwa town Tokiwa Uchimachi	West	34km	March 17	0.9	0.0002	1.4
52	Tamura city Funehiki town funehiki Babakawara	West	41km	March 17	0.8	0.0002	1.2
11	Nihonmatsu city Ota aza Shimoda	West/North/West	43km	March 17	3.8	0.0008	5.6
35	Nihonmatsu city Tazawahagidaira	West/North/West	37km	March 19	2.9	0.0009	4.8
10	Nihonmatsu city Harimichi Nakajima	West/North/West	44km	March 17	2.5	0.0009	3.6
ni1	Nihonmatsu city Kamikawasaki Itouchi	West/North/West	51km	April 25	4.7	0.0009	6.8
ni2	Nihonmatsu city Tazawa Shimomagariyama	West/North/West	36km	April 26	3.4	0.0007	4.9
2	Fukushima city Onami Takinoiri	North/West	56km	March 17	6.7	0.0012	9.3
88	Fukushima city Higarigaoka	West/North/West	58km	April 3	4.0	0.0004	4.8
1	Fukushima city Sugitsuma town	North/West	62km	March 16	2.7	0.0005	3.8
85	Fukushima city Arai Harajiku	West/North/West	66km	March 27	1.4	0.0004	2.3
d11	Fukushima city Higashihama town	North/West	61km	April 27	6.6	0.0016	10.0
d13	Fukushima city Nankodai	North/West	59km	April 27	6.8	0.0013	9.6
d6	Fukushima city Koganeyama	North/West	62km	April 27	5.9	0.0014	8.9
d1	Fukushima city Minamiyanome Michishita	North/West	66km	April 27	5.7	0.0014	8.7
d8	Fukushima city Miyashita town	North/West	63km	April 27	4.3	0.0011	6.7
d12	Fukushima city Watari	North/West	61km	April 27	4.6	0.0006	6.0
d10	Fukushima city Kamihama town	North/West	61km	April 27	3.6	0.0007	5.1
d7	Fukushima city Sankyoe	North/West	63km	April 27	3.6	0.0006	4.9
d9	Fukushima city Shinhama town	North/West	62km	April 27	2.8	0.0004	3.8
108	Minamisoma city Haramachi ward Ohara Daihata	North/North/West	29km	April 7	9.2	0.0018	13.1
107	Minamisoma city Haramachi ward Baba Shimonakanouchi	North/North/West	23km	April 7	6.8	0.0008	8.4
6	Minamisoma city Kashima ward Nishimachi	North	32km	March 17	2.8	0.0007	4.4
7	Minamisoma city Kashima ward Terauchi Motoyashiki	North	32km	March 17	2.1	0.0005	3.2
103	Minamisoma city Haramachi ward Taka Mamegarauchi	North	21km	April 7	1.7	0.0003	2.4
80	Minamisoma city Haramachi ward Takami town	North	24km	March 20	1.5	0.0002	1.9

## Estimated Integrated Dose at Each Monitoring Location based on Measured Values

Location Number	Location (Monitoring Area) [*1]	From TEPCO Fukushima Dai-ichi NPP		Date on which air dose monitoring was commenced	Estimates of Integrated Dose [*2][*3][*4]		Estimates of Integrated Dose as of March 11, 2012 (mSv) [*6]
		Direction	Distance		(mSv)	Latest Readings (Average) [*5] (mSv/h)	
ms1	Minamisoma city Haramachi ward Ohara aza Hebiishi	North/North/West	33km	April 26	13.8	0.0032	20.8
ms5	Minamisoma city Haramachi ward Takakura aza Domae	North/North/West	26km	April 26	11.2	0.0025	16.6
ms11	Minamisoma city Haramachi ward Ohara aza Daihata	North/North/West	29km	April 26	8.5	0.0016	12.0
ms2	Minamisoma city Kashima ward Jisabara aza Kamahai	North/North/West	32km	April 26	6.7	0.0015	9.9
ms3	Minamisoma city Kashima ward Kamitochikubo aza Kanodai	North/North/West	37km	April 26	4.5	0.0011	7.0
ms7	Minamisoma city Haramachi ward Baba aza Nakouchi	North/North/West	23km	April 26	4.5	0.0007	5.9
ms9	Minamisoma city Haramachi ward Takami town	North	24km	April 26	1.4	0.0003	2.0
ms10	Minamisoma city Haramachi ward taka aza Mamegarauchi	North	21km	April 26	1.0	0.0003	1.7
ms8	Minamisoma city Haramachi ward Kanezawa aza Oiai	North	28km	April 26	0.9	0.0003	1.5
mo1	Motomiya city Wada	West/North/West	52km	April 25	8.3	0.0015	11.5
(3) The emergency evacuation preparation areas							
31	Tamura city Miyakoji town Furumichi	West/South/West	18km	May 6	4.9	0.0010	7.2
24	Tamura city Miyakoji town Furumichi	West	17km	May 6	4.3	0.0009	6.4
37	Futaba county Okuma town Koirino	West/South/West	3.0km	May 6	341.2	0.0740	503.1
29	Futaba county Okuma town oaza Ottozawa	West	2.4km	May 6	261.3	0.0614	395.6
47	Futaba county Okuma town oaza Kumagawa	South/South/West	3.7km	May 6	153.5	0.0306	220.5
36	Futaba county Okuma town Shimonogami	West/South/West	4.8km	May 6	134.4	0.0347	210.3
30	Futaba county Okuma town oaza Ottozawa	West	2.6km	May 6	114.0	0.0156	170.1
23	Futaba county Okuma town oaza Ottozawa	West/North/West	2.3km	May 6	97.9	0.0207	143.1
50	Futaba county Okuma town oaza Kumagawa	South	4.0km	May 6	87.8	0.0173	123.6
35	Futaba county Okuma town oaza Nogami	West/South/West	6.6km	May 6	66.0	0.0142	96.9
38	Futaba county Okuma town Koirino	West/South/West	3.4km	May 6	56.0	0.0147	88.1
34	Futaba county Okuma town Ogawara	West/South/West	7.5km	May 6	15.9	0.0036	23.8
26	Futaba county Okuma town oaza Nogami	West	11km	May 6	15.8	0.0033	23.0
25	Futaba county Okuma town oaza Nogami	West	14km	May 6	13.4	0.0034	20.8
32	Futaba county Kawauchi village Shimokawauchi	West/South/West	20km	May 6	7.5	0.0017	11.1
33	Futaba county Kawauchi village Shimokawauchi	West/South/West	15km	May 6	5.0	0.0012	7.8
46	Futaba county Tomioka town oaza Oragahama	South/South/West	5.6km	May 6	78.7	0.0016	115.1
45	Futaba county Tomioka town oaza Motooka	South/South/West	7.1km	May 6	51.9	0.0109	75.6
42	Futaba county Tomioka town oaza Kamiteoka	South/West	7.9km	May 6	33.6	0.0062	47.9
39	Futaba county Tomioka town oaza Kamiteoka	South/West	13km	May 6	25.3	0.0052	36.6
49	Futaba county Tomioka town oaza Kobama	South	9.4km	May 6	18.5	0.0047	28.7
54	Futaba county Tomioka town oaza Kamiteoka	South/West	11km	October 4	15.5	0.0034	23.0
43	Futaba county Tomioka town oaza Kamikoriyama	South/South/West	13km	May 6	14.6	0.0028	20.7
40	Futaba county Tomioka town oaza Kamiteoka	West/South/West	10km	May 6	9.0	0.0018	12.9



## Estimated Integrated Dose at Each Monitoring Location based on Measured Values

Location Number	Location (Monitoring Area) [*1]	From TEPCO Fukushima Dai-ichi NPP		Date on which air dose monitoring was commenced	Estimates of Integrated Dose [*2][*3][*4]	Latest Readings (Average) [*5]	Estimates of Integrated Dose as of March 11, 2012 (mSv) [*6]
		Direction	Distance		(mSv)	(mSv/h)	
19	Futaba county Namie town Kawabusa	North/West	19km	May 6	146.1	0.0327	217.5
53	Futaba county Namie town oaza Ide	West/North/West	11km	October 4	104.8	0.0230	155.2
14	Futaba county Namie town Hirusone	North/West	20km	May 6	89.1	0.0255	145.0
21	Futaba county Namie town oaza Ide	West/North/West	9.1km	May 6	100.2	0.0193	142.5
20	Futaba county Namie town oaza Omaru	West/North/West	12km	May 6	93.8	0.0212	140.2
15	Futaba county Namie town Murohara	North/West	16km	May 6	87.4	0.0197	130.6
17	Futaba county Namie town oaza Suemori	North/West	11km	May 6	42.7	0.0094	63.3
9	Futaba county Namie town Sakai	North/North/West	7.3km	May 6	39.3	0.0080	56.7
13	Futaba county Namie town oaza Tatsuno	North/West	14km	May 6	29.0	0.0078	46.0
16	Futaba county Namie town oaza Tatsuno	North/North/West	11km	May 6	24.4	0.0050	35.2
2	Futaba county Namie town oaza Kitakiyohashi	North	8km	May 6	2.7	0.0005	3.9
52	Futaba county Naraha town oaza Kamikobana	South/South/West	18km	September 14	3.9	0.0009	5.9
44	Futaba county Naraha town Kamishigeoka	South/South/West	14km	May 6	10.2	0.0020	14.5
41	Futaba county Naraha town oaza Ide	South/West	15km	May 6	8.6	0.0016	12.1
48	Futaba county Naraha town oaza Ide	South	16km	May 6	3.3	0.0008	5.1
8	Futaba county Futaba town oaza Nagatsuka	North/North/West	4.8km	May 6	112.9	0.0254	168.5
27	Futaba county Futaba town Ishikuma	West/North/West	7.3km	May 6	80.5	0.0154	114.2
28	Futaba county Futaba town oaza Yamada	West	7.1km	May 6	43.4	0.0100	65.4
10	Futaba county Futaba town oaza Nagatsuka	North/North/West	4.1km	May 6	46.0	0.0073	62.0
22	Futaba county Futaba town oaza Maeta	West/North/West	3.6km	May 6	36.3	0.0081	54.0
18	Futaba county Futaba town Terasawa	North/West	7.0km	May 6	28.4	0.0057	40.8
11	Futaba county Futaba town oaza Shinzan	North/West	3.5km	May 6	19.4	0.0040	28.2
12	Minamisoma city Odaka ward Kanaya	North/West	18km	May 6	36.5	0.0081	54.2
51	Minamisoma city Odaka ward Kawabusa	North/West	16km	May 6	20.2	0.0050	31.1
6	Minamisoma city Odaka ward Otomi	North/North/West	19km	May 6	7.8	0.0020	12.1
7	Minamisoma city Odaka ward Kamiyama	North/North/West	13km	May 6	8.2	0.0018	12.1
3	Minamisoma city Odaka ward Katakusa	North/North/West	18km	May 6	4.5	0.0009	6.5
4	Minamisoma city Odaka ward Izumisawa	North/North/West	14km	May 6	2.8	0.0006	4.1
1	Minamisoma city Odaka ward Oi	North	16km	May 6	2.4	0.0006	3.8
5	Minamisoma city Odaka ward Namedu	North/North/West	11km	May 6	2.3	0.0005	3.4

This table was jointly compiled by the Nuclear Safety Commission, MEXT, and the Nuclear and Industrial Safety Agency.

\*1: Information on the latitude and longitude of each monitoring spot is available on the MEXT website.

\*2: Shown values are integrated values monitored from 6:00, March 12 through 24:00, October 11. The same estimation method as that used by the Nuclear Safety Commission on March 26, 2011 is used, whereby the values are estimated by multiplying the monitored values by 0.6 in consideration of the reduction effect of wooden buildings (0.4) when staying outdoors for eight hours and indoors for 16 hours.

\*3: For locations where the monitoring started on or after March 19, the dose data for the period from March 17 to the day before the start of monitoring has been derived by assuming that the dose has changed in proportion to changes at Location No. 32, where the steepest dose change was observed.

\*4: For the period where actual values monitored by a simple integrating dosimeter are available, such values are indicated.

\*5: Regarding the average of the estimates from October 9 to October 11: Where no measurement results are available for the period from October 9 to October 11, average values are calculated, presuming the values on or after the last measurement date are proportional to the air doses measured at point 32. As for locations where actual values have been obtained by a simple integrating dosimeter, this is the average (from October 9 to October 11) of the integrated values monitored since the time of the previous data sampling divided by the time lapsed.

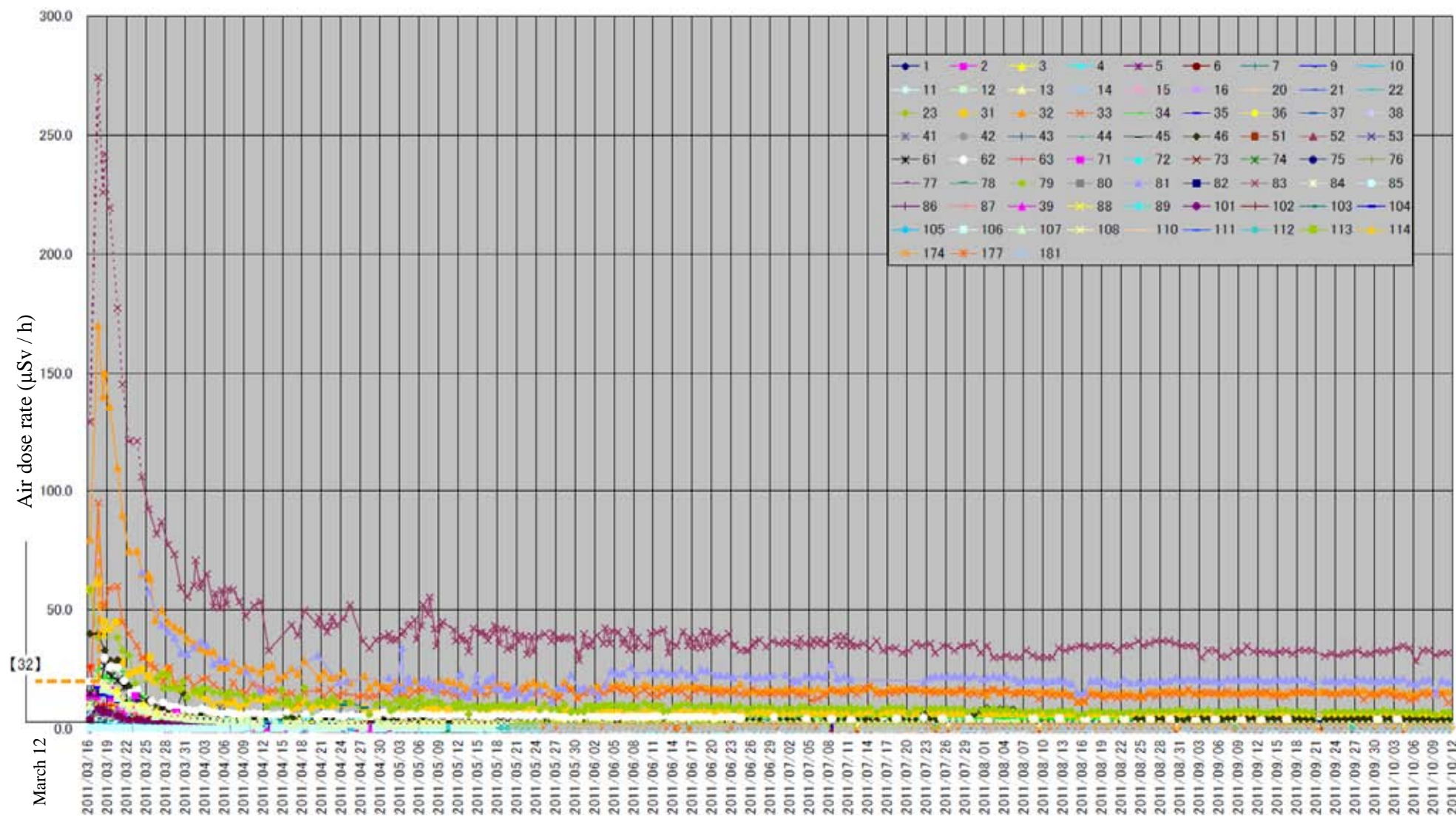
\*6: Shown values have been obtained while supposing that the latest monitored values (the average) [\*5] will stay unchanged on and after October 12.

In the isogram map of estimated integrated doses, the values for a total of 8,421 air dose monitoring locations were used (the 215 locations mentioned above plus the 8,206 locations below).

- 1) Air dose rates observed in the emergency environmental monitoring conducted by Fukushima Prefecture from March 30 to August 11: 97 locations
- 2) Air dose rates observed in monitoring conducted by MEXT on April 9 in Katsurao village and Namie town: 16 locations
- 3) Air dose rates observed in monitoring conducted by MEXT on April 12 and April 14 in Iitate village, Iwaki city, Katsurao village, Kawauchi village, Tamura city, Namie town, Hirono town, and Minamisoma city, in monitoring conducted by MEXT on June 5, 6, 10, 13, 14 and 24 in Date city, Minamisoma city, Iwaki city, and Kawauchi village, and in monitoring conducted by MEXT on April 26, May 12, 20 and 25 in Kawamata town: 411 locations
- 4) Air dose rates observed within the area covered by the isogram map in the grid survey conducted by Fukushima Prefecture from April 12 to April 16: 1,788 locations
- 5) Air dose rates observed within the area covered by the isogram map in the environmental radioactivity monitoring conducted by Fukushima Prefecture (municipalities and 7 regions in Fukushima and areas within 20 to 50 km): 65 locations
- 6) Air dose rates observed inside the 20 km zone in monitoring conducted by MEXT and TEPCO: 178 locations
- 7) Air dose rates continuously monitored from April 12 at monitoring posts 1 to 8 near the border of the site of Fukushima Dai-ichi NPP: 8 locations
- 8) Air dose rates of distribution map of radiation dose released by MEXT on August 2: 1511 locations
- 9) Readings of Radiation Monitoring under the Action Plan toward the Removal of the Designation of Emergency Evacuation Preparation Areas (Detailed) released by MEXT and Team in Charge of Assisting the Lives of Disaster Victims on August 16: 1437 locations
- 10) Readings of the Wide-area Monitoring in Restricted Areas and Planned Evacuation Zones released by Team in Charge of Assisting the Lives of Disaster Victims and MEXT on September 1: 2,695 locations



# Changes in Air Dose Rate Readings



Notes: In cases where more than one reading was taken during the six-hour period, the maximum value is plotted.  
The dotted lines show estimates assumed as being proportional to the values at location 32, not measured values.

Monitoring date